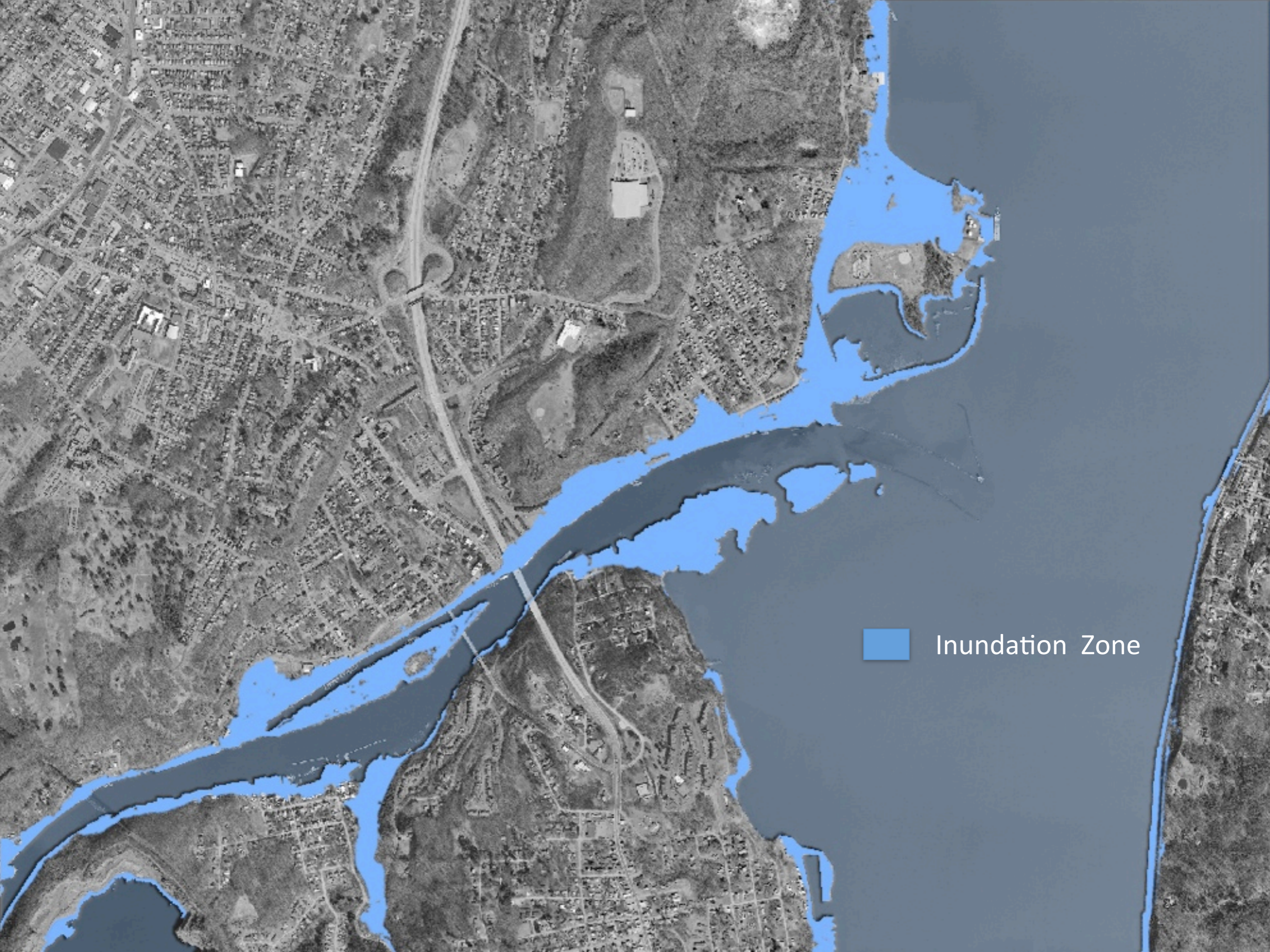
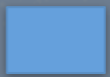
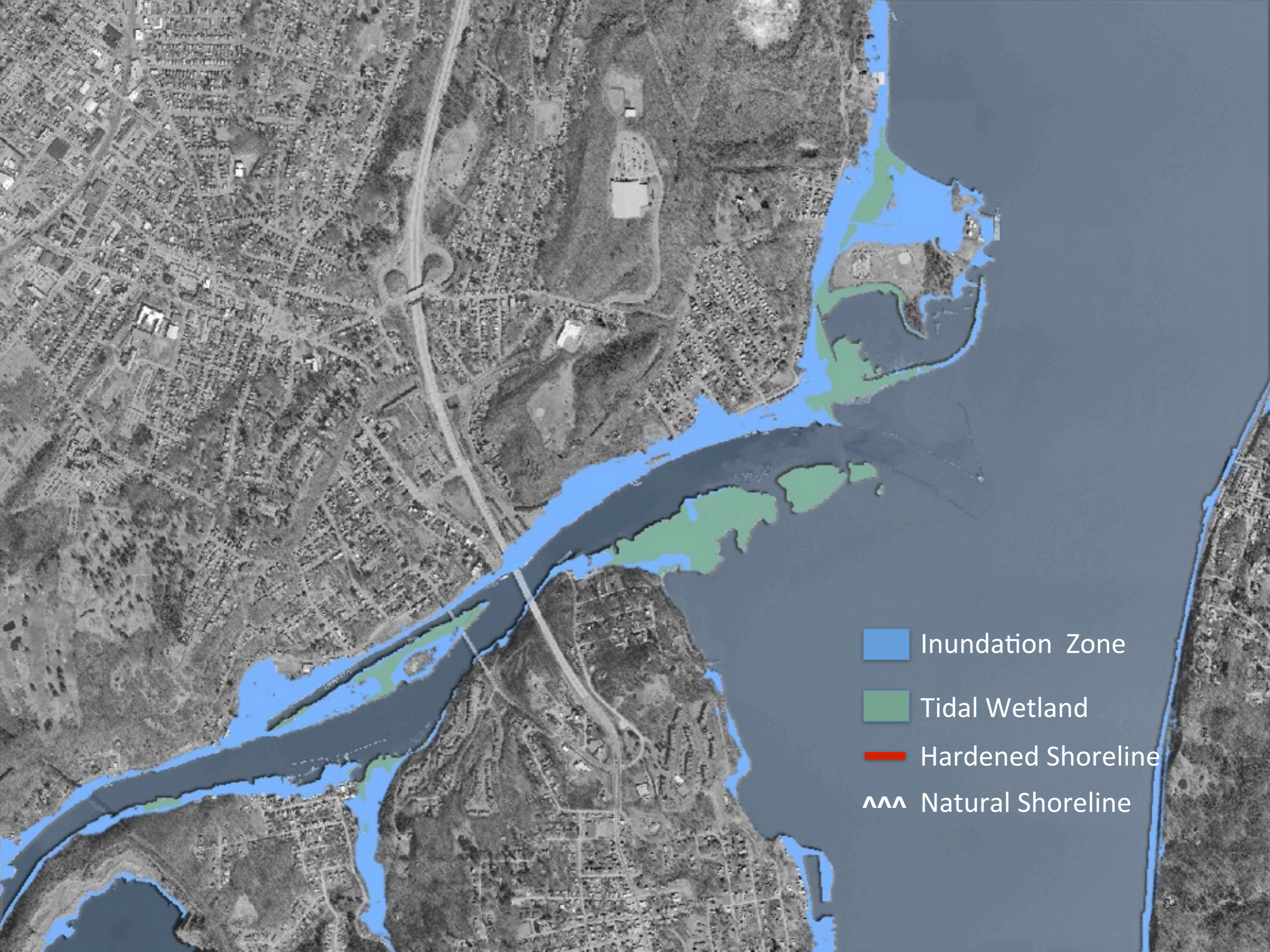


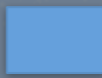
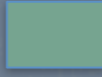


Prior Mapping from
Revitalizing Hudson
Riverfronts Forum,
January 2012

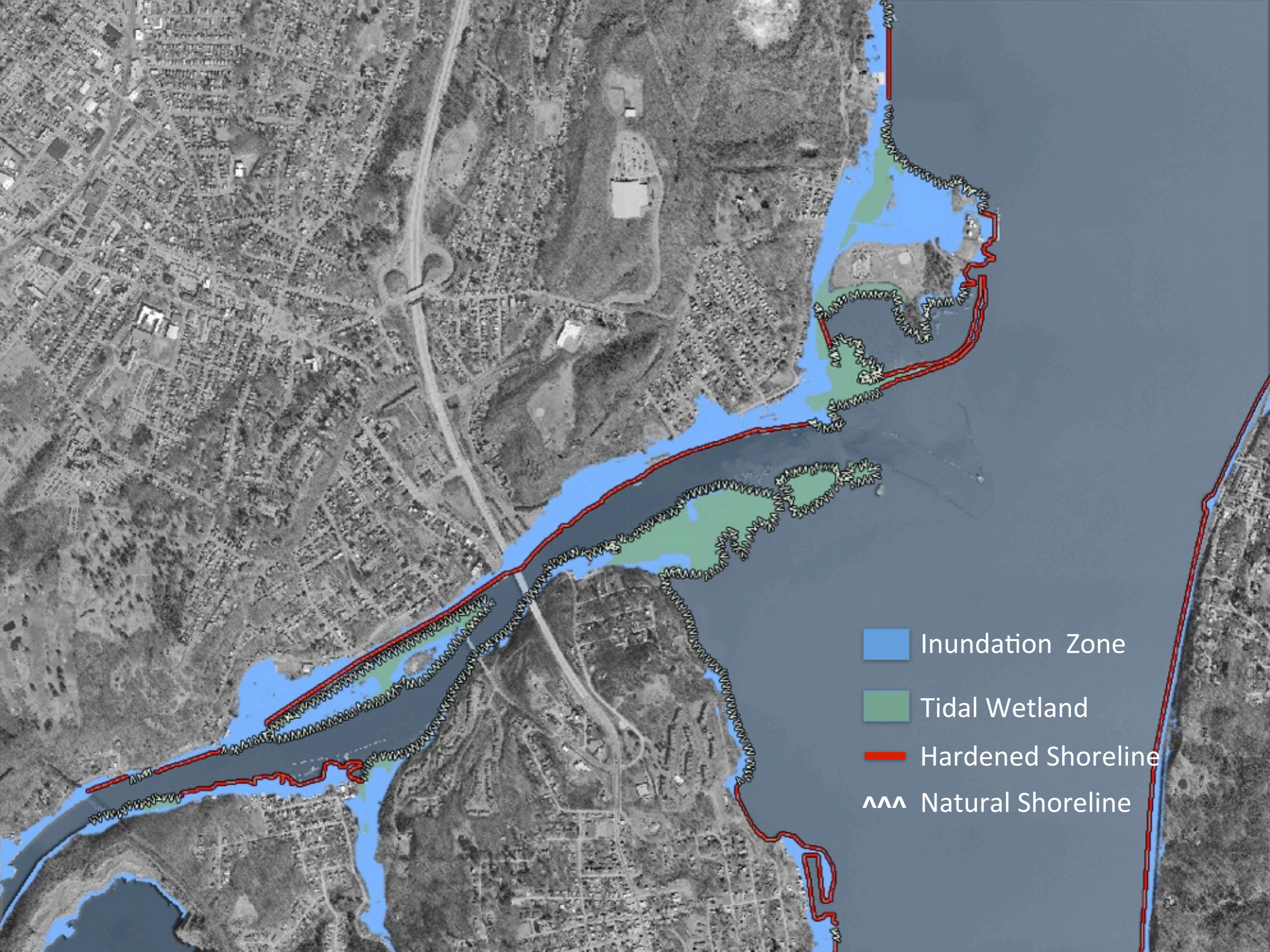


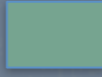
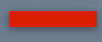



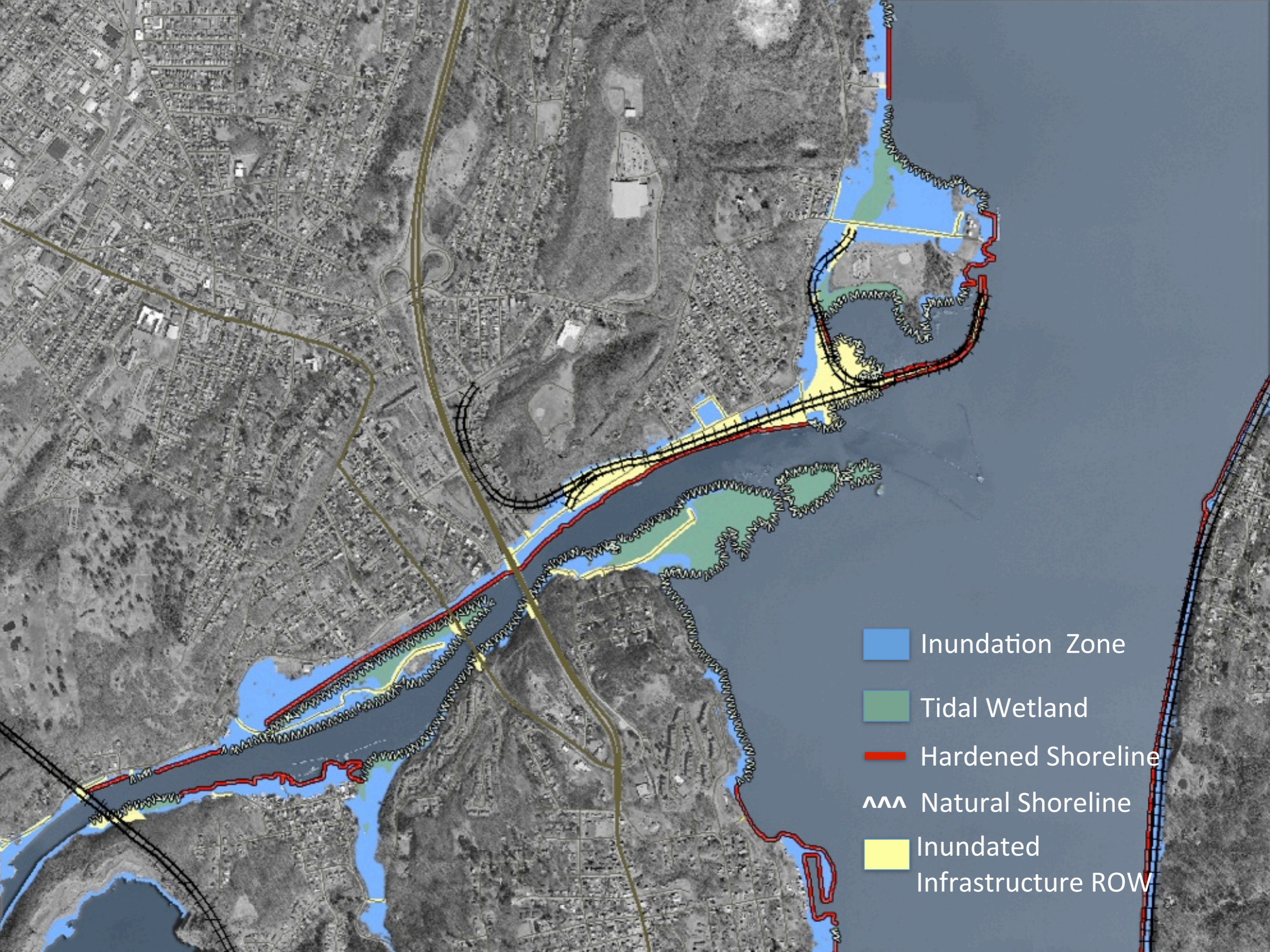
 Inundation Zone



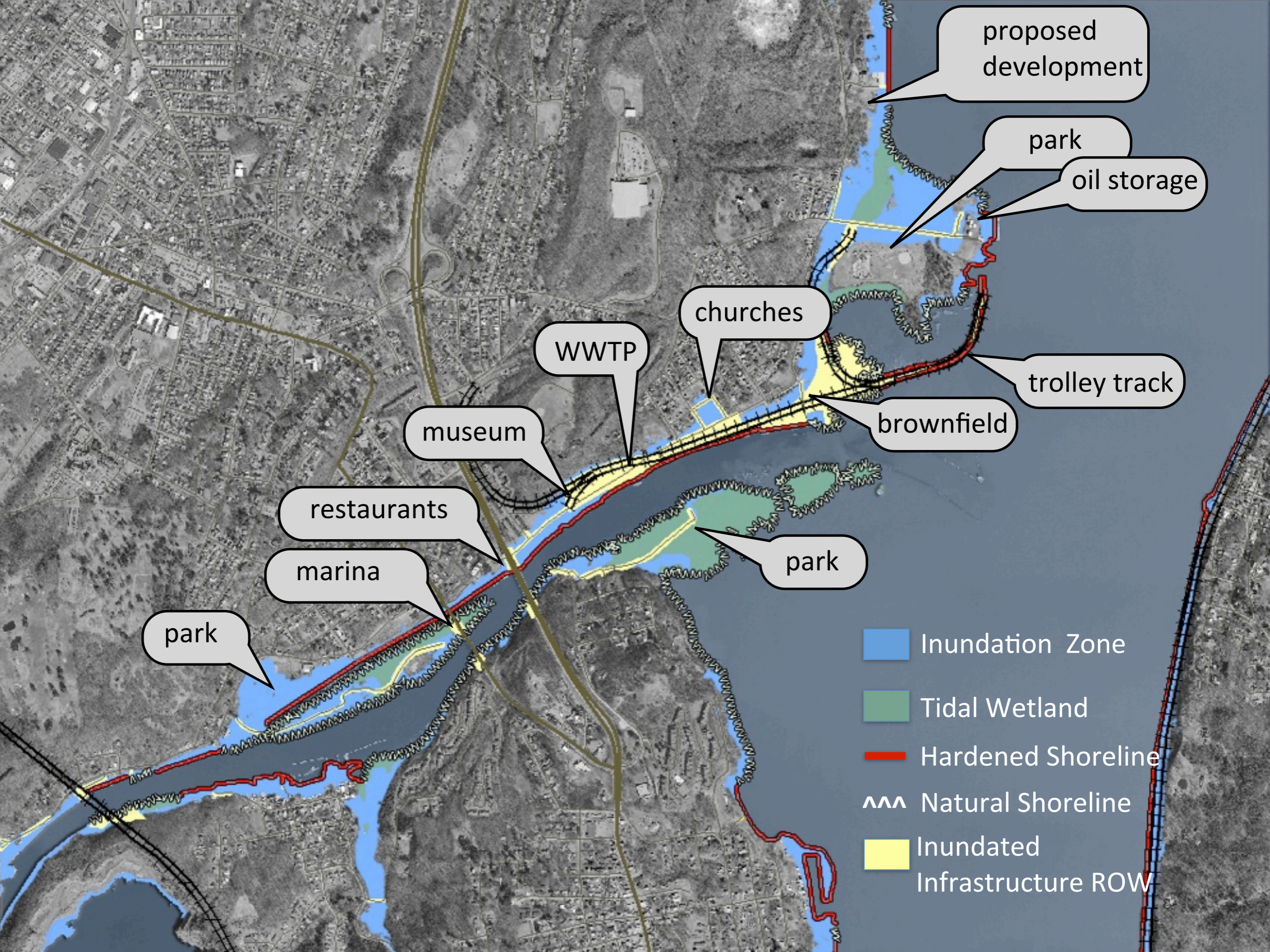
-  Inundation Zone
-  Tidal Wetland
-  Hardened Shoreline
-  Natural Shoreline

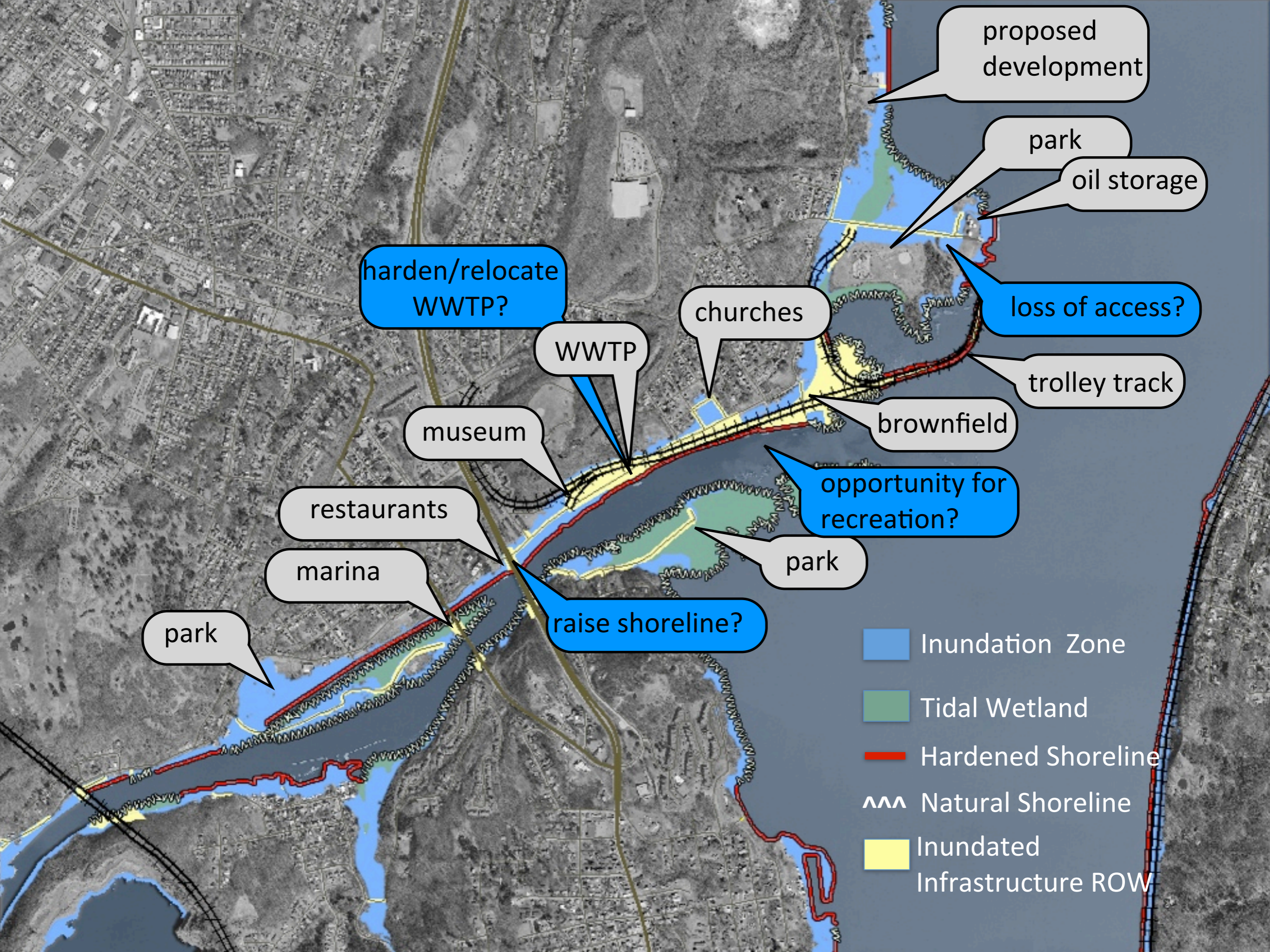


-  Inundation Zone
-  Tidal Wetland
-  Hardened Shoreline
-  Natural Shoreline



- Inundation Zone
- Tidal Wetland
- Hardened Shoreline
- Natural Shoreline
- Inundated Infrastructure ROW





proposed development

park

oil storage

harden/relocate WWTP?

chances

loss of access?

WWTP

trolley track

museum

brownfield

opportunity for recreation?

restaurants

park

marina

raise shoreline?

park

- Inundation Zone
- Tidal Wetland
- Hardened Shoreline
- Natural Shoreline
- Inundated Infrastructure ROW

Local Assets & Vulnerability Activity (4:00)

In small groups, please discuss your advice for the Task Force about:

1. How they should choose among/prioritize assets to consider? How they should decide which of these are especially key for the community?
2. What types of community assets are especially important? (Consider marinas, civic spaces, infrastructure, natural resources, economic issues, transportation, commerce, recreation)

Someone will take detailed notes at each table.

