



# City of Kingston, NY OPEN SPACE PLAN

Public Visioning Workshop  
September 25, 2018





*Welcome!*

# City of Kingston Open Space Plan Visioning Workshop

*This project has received technical assistance from the NYSDEC Hudson River Estuary Program, and funding from an Estuary Grant.*





*Thank you for attending!*

## Agenda Tonight

<i>5:00-5:30pm</i>	<i>Intro Presentation</i>
<i>5:30-7:00pm</i>	<i>Resource Prioritization &amp; Map Table Discussions</i>
<i>7:00-7:30pm</i>	<i>Summary Wrap Up</i>
<i>8:00pm</i>	<i>Library Closes</i>





### What is an Open Space Plan?

## Ulster County Open Space Resources

**1. Protected Open Space:**  
Areas already legally protected (e.g., Catskill Forest Preserve)



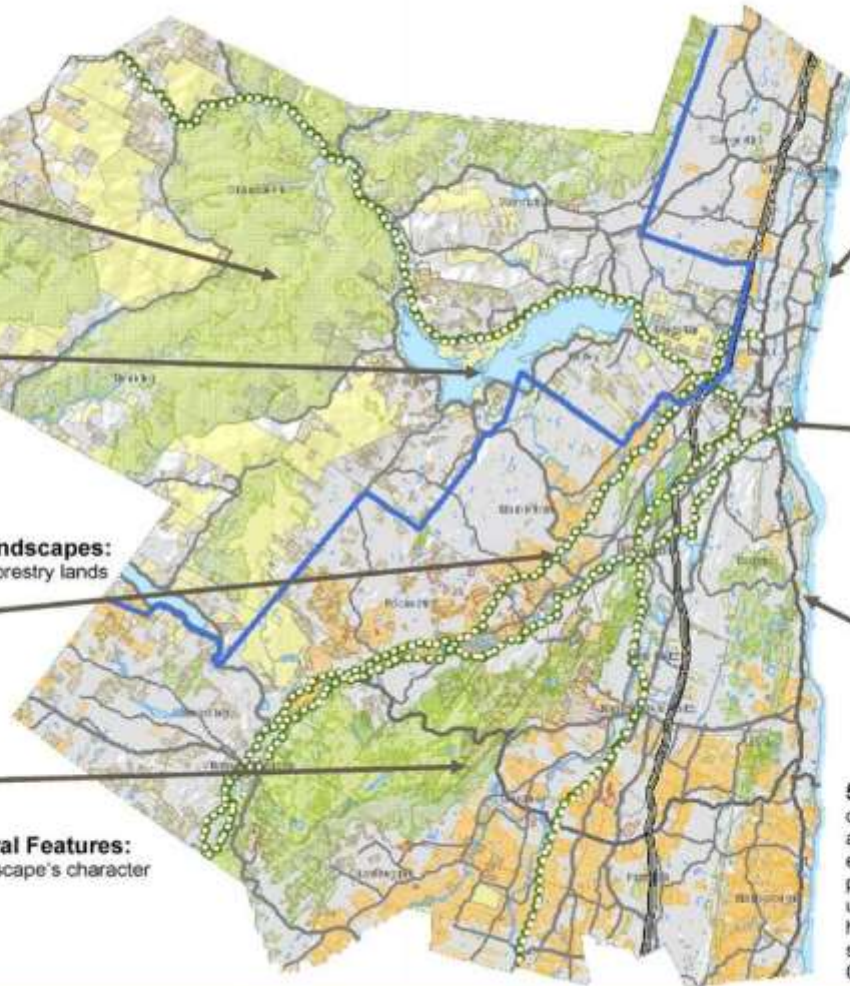
**2. Water Resources:**  
Surface, ground, watersheds, aquifers, aquifer recharge areas, floodplains, wetlands and vernal pools



**3. Working Landscapes:**  
Agricultural and forestry lands



**4. Landforms and Natural Features:**  
Features that define the landscape's character (e.g., Shawangunk Ridge)



Protected Open Space
  Forestry
  Biodiversity
  Working Landscapes
  Historic Sites
  Catskill Park Boundary
  Federal, State & County Roads



**7. Recreation Resources:**  
rural and urban parks, shorelines, fishing and hunting areas, trails, and tourism sites (e.g., Ulster Landing Park)



**6. Cultural and Historic Resources**  
Federal, state and locally designated structures, sites and districts (e.g., Kingston Rondout Waterfront District)

**5. Ecological Communities:**  
diversity of species and ecosystems, exceptional forest or plant community, unique and wildlife habitats, wetlands, shorelines (e.g., Black Creek)





## What is an Open Space Plan?

Open space plans and conservation are about identifying what areas of your community are most important to protect for long-term growth and resource planning.







## What is an Open Space Plan?

An **Open Space Plan** can help:

- Protect safe drinking water
- Improve flood control
- Maintain habitats for wildlife
- Reduce noise pollution
- Improve air quality
- Provide outdoor recreation
- Conserve important farmland
- Conserve scenic resources
- Steer future zoning policy
- Protect property values





## The Role of the Public

Public input is crucial to this plan. The public can assist the Committee in:

- Confirming resource inventory
- Identifying community priorities and values
- Developing plan concepts
- Synthesizing a vision
- Reviewing the draft plan
- Refining the final plan
- Helping to promote the implementation of these ideas after adoption







## Common Types of Recommendations

- Identifying the priority areas of town for permanent conservation or park space.
- Ways to improve access to existing open space, park and water resources.
- Identifying potential future trail connections and outdoor recreational opportunities.
- Increasing public awareness and support of local open spaces and natural resources.







## Common Types of Recommendations

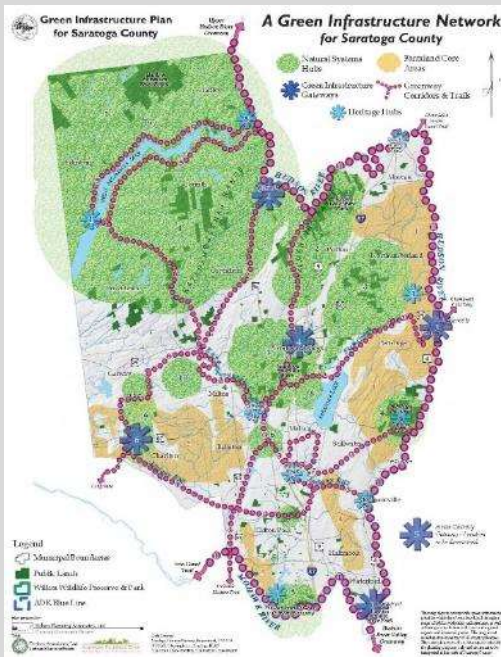
- Provide guidance for landowners who may want to conserve land.
- Strategies for funding land acquisition.
- Identification of current zoning issues which conflict with open space goals.
- Identifying ways zoning code could be modified to help protect open space resources.





## VISION MAP

## PLAN DOCUMENT



**TOWN OF SAUGERTIES  
OPEN SPACE PLAN**

**DRAFT - DECEMBER 2009**

This project was funded by the New York State Department of Environmental Conservation's Hudson River Estuary Grants Program

The cover of the plan document features a large photograph of a wide river flowing through a lush, green landscape. At the bottom, there are two logos: the official seal of the Town of Saugerties on the left and the logo for Behan Planning and Design on the right.



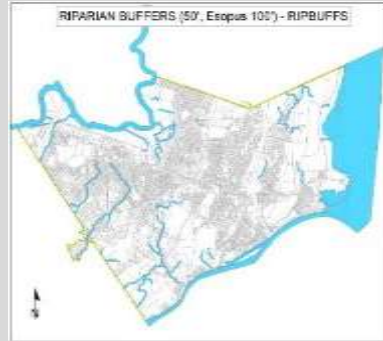


## Natural Resource Inventory

### FORESTS



### RIPARIAN BUFFERS



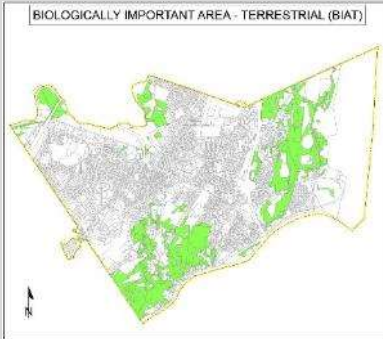
### PARKLAND



### HISTORIC SITES



### LAND BIOLOGY



### RECREATION AMENITIES

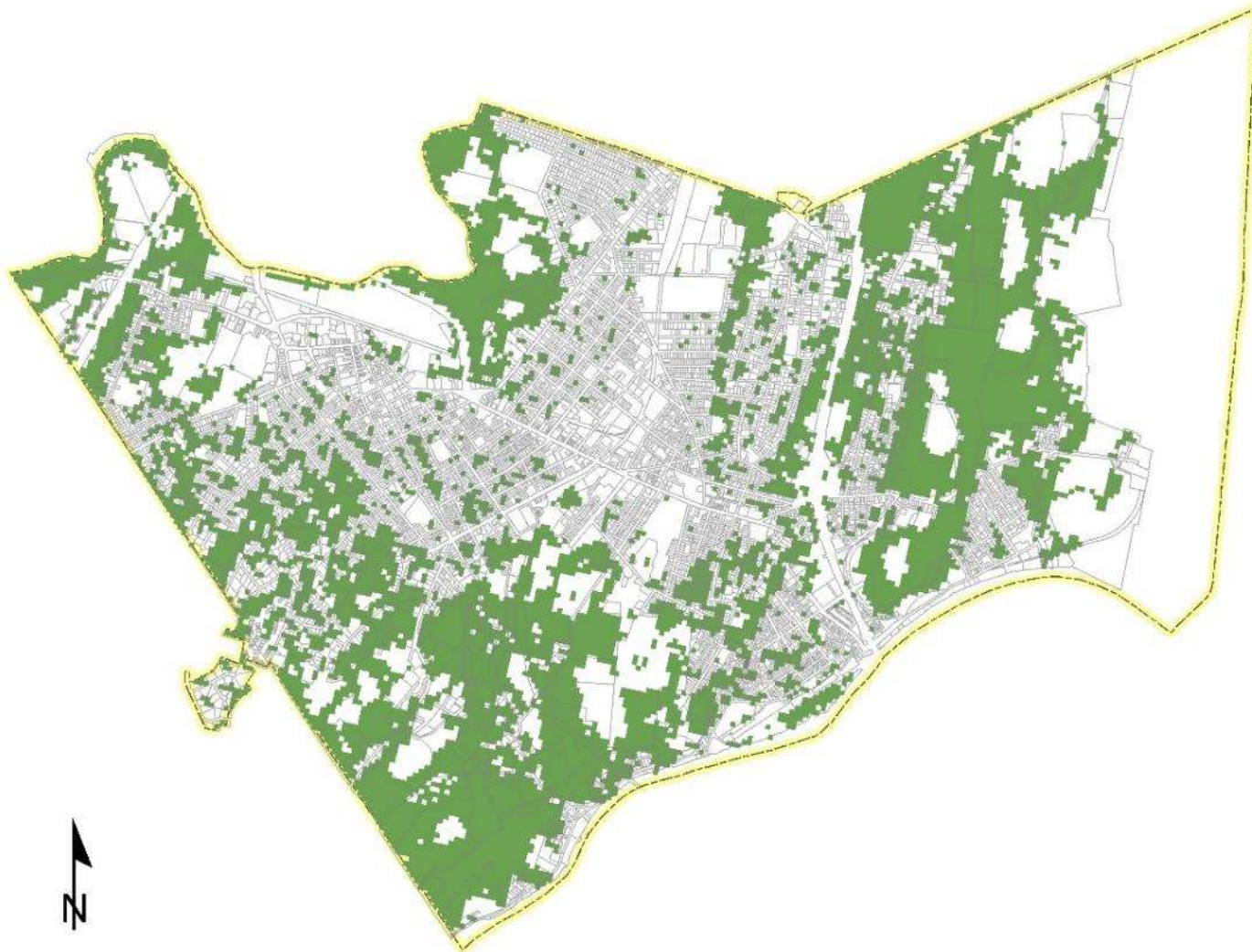


### AQUATIC BIOLOGY



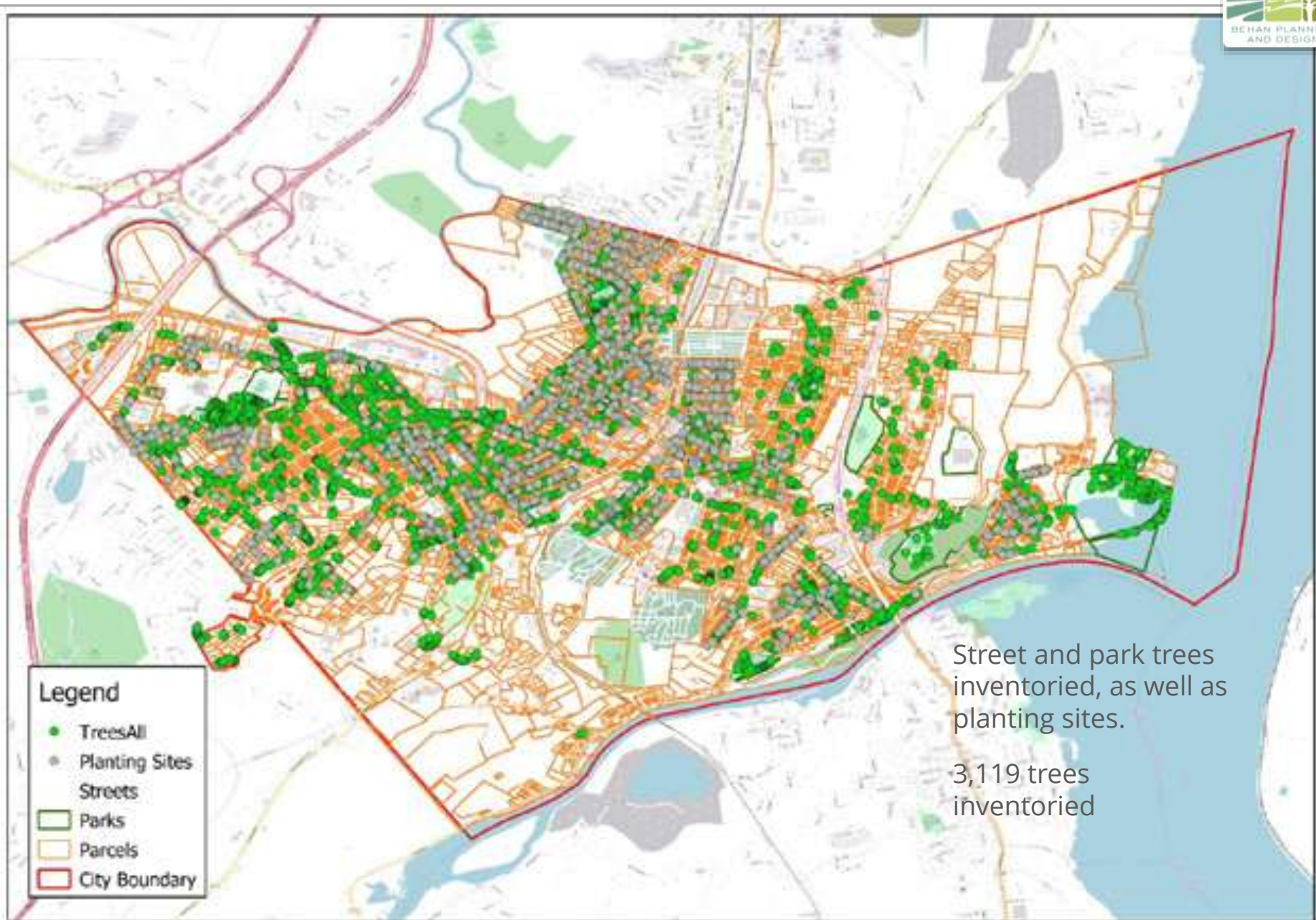


### EXTENT OF URBAN FOREST CANOPY $\geq$ 40% - TREECAN40



Contains significant tree canopy – greater than 40% coverage.



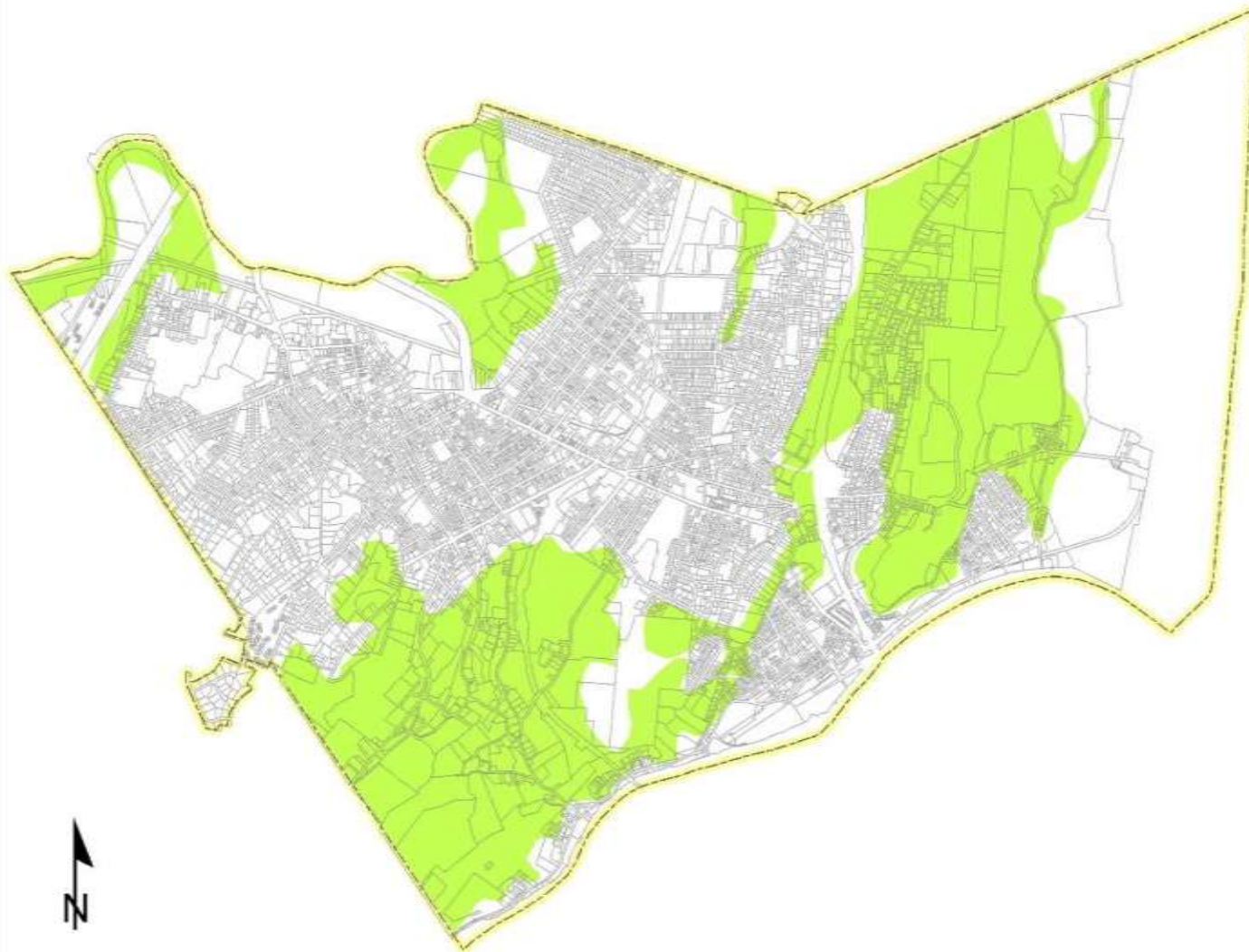


Street and park trees inventoried, as well as planting sites.

3,119 trees inventoried



### TERRESTRIAL CORRIDORS - TERRCORN



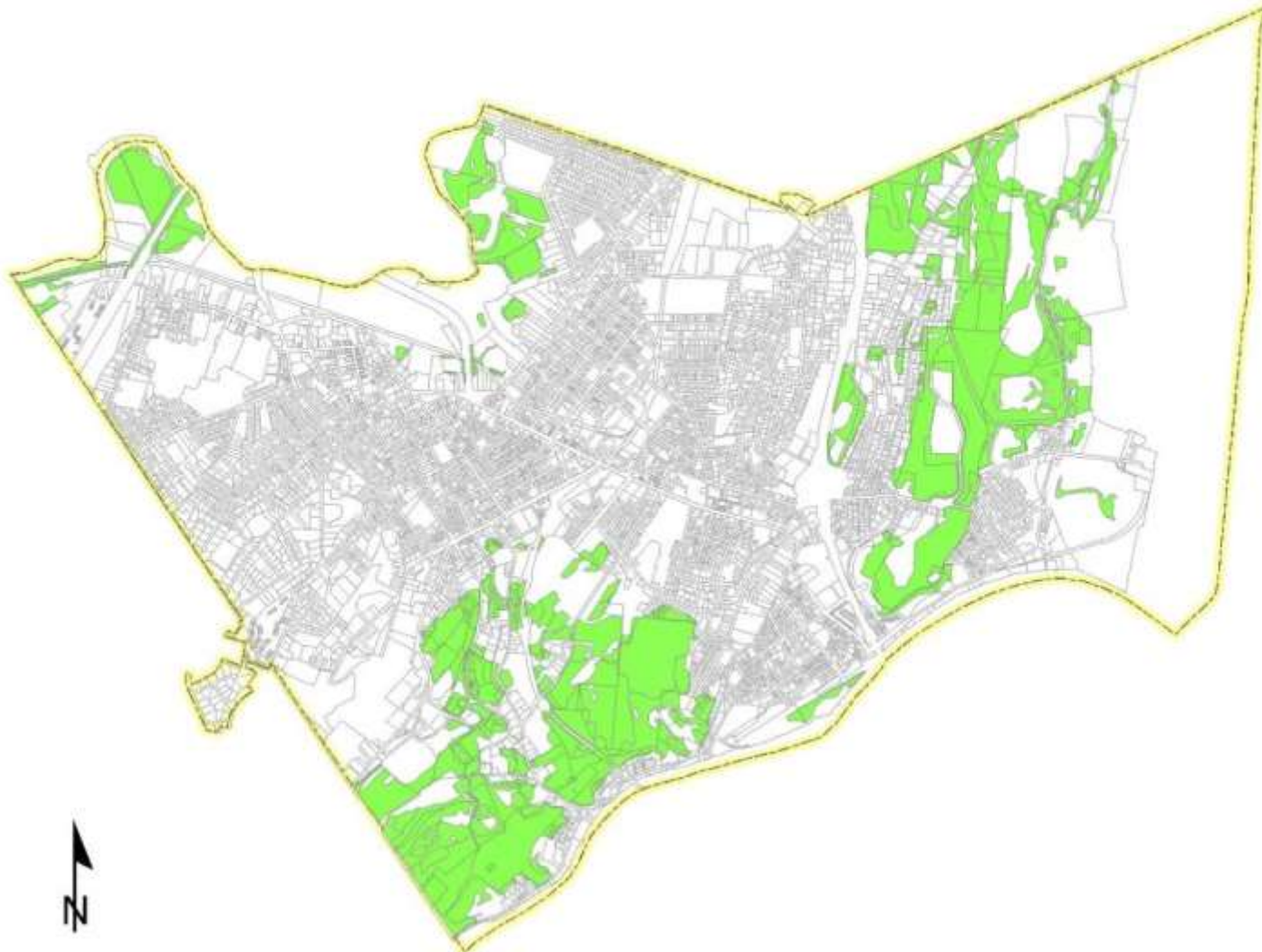
Connected areas of habitat allowing wildlife movement.

Want to avoid fragmentation.





### BIOLOGICALLY IMPORTANT AREA - TERRESTRIAL (BIAT)



Contains upland areas identified with significant regional biological importance.

Non-tidal, non-aquatic habitat.

Upland hardwood forest

Upland mixed forest

Upland conifer forest

Rocky barren

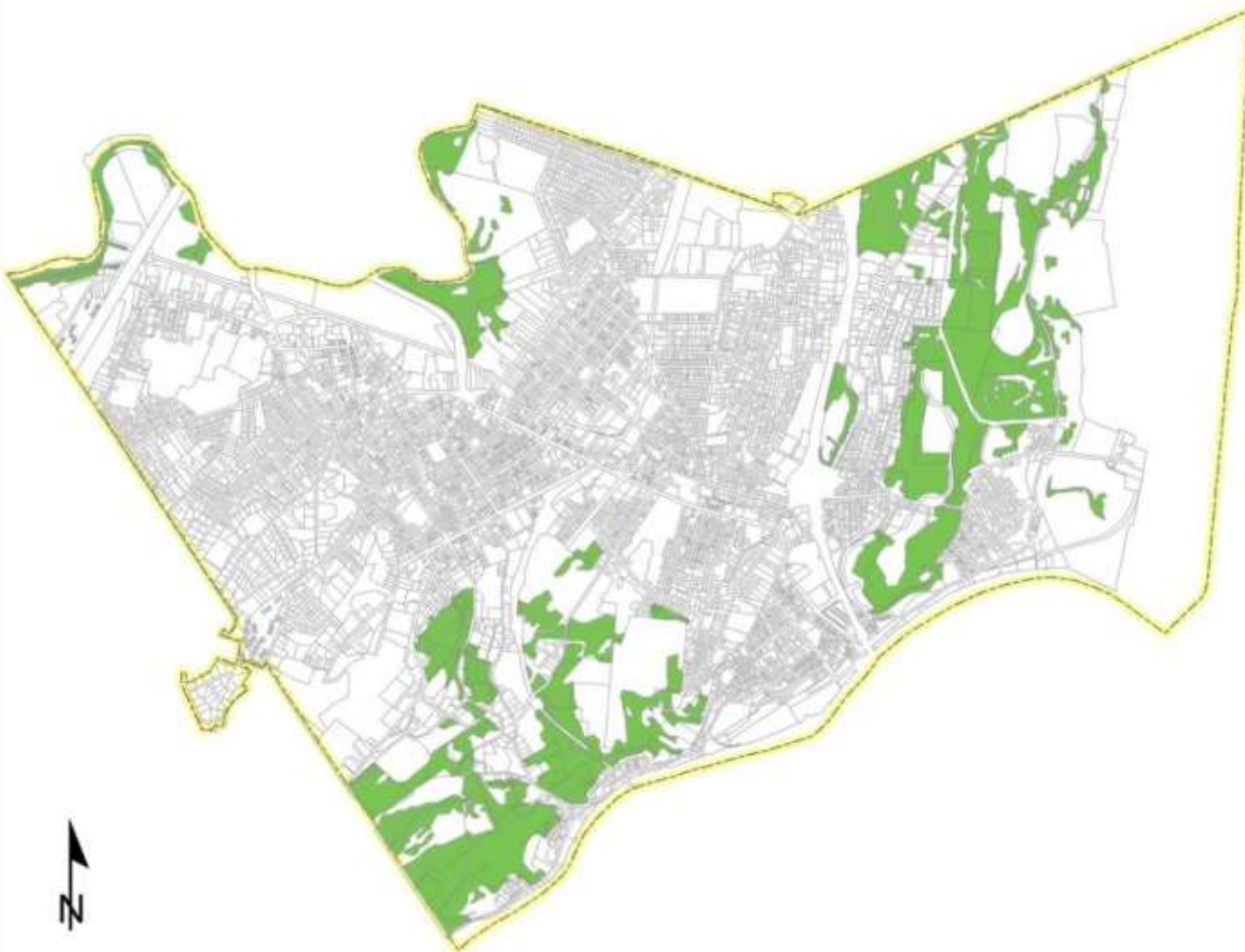
Upland shrubland

Upland meadow

Calcareous crest



### MATRIX OF DOMINANT HABITAT (Urban Forest)- HABMATRIX



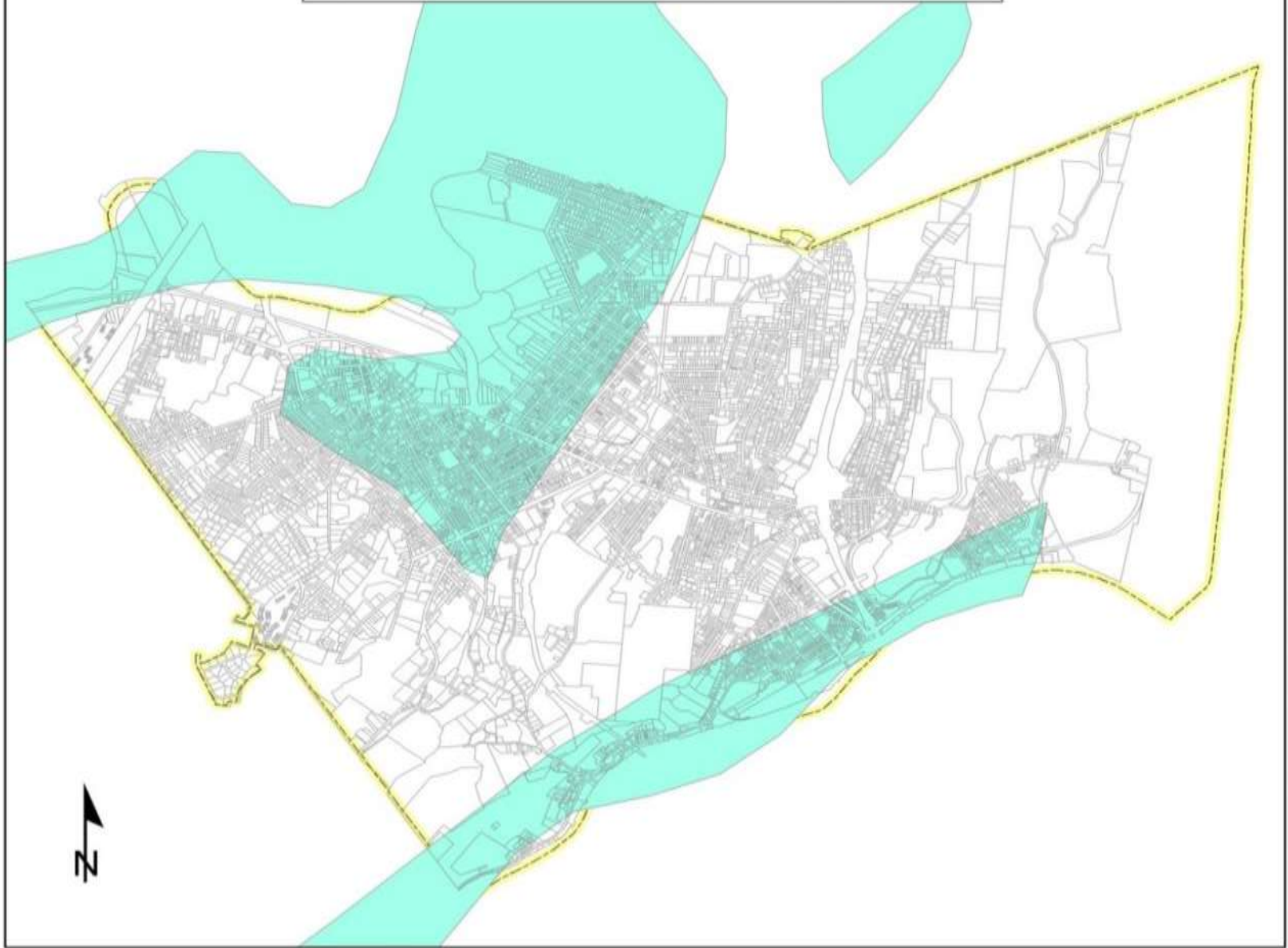
Contains areas identified with unique or underrepresented habitat types.

Upland hardwood forest



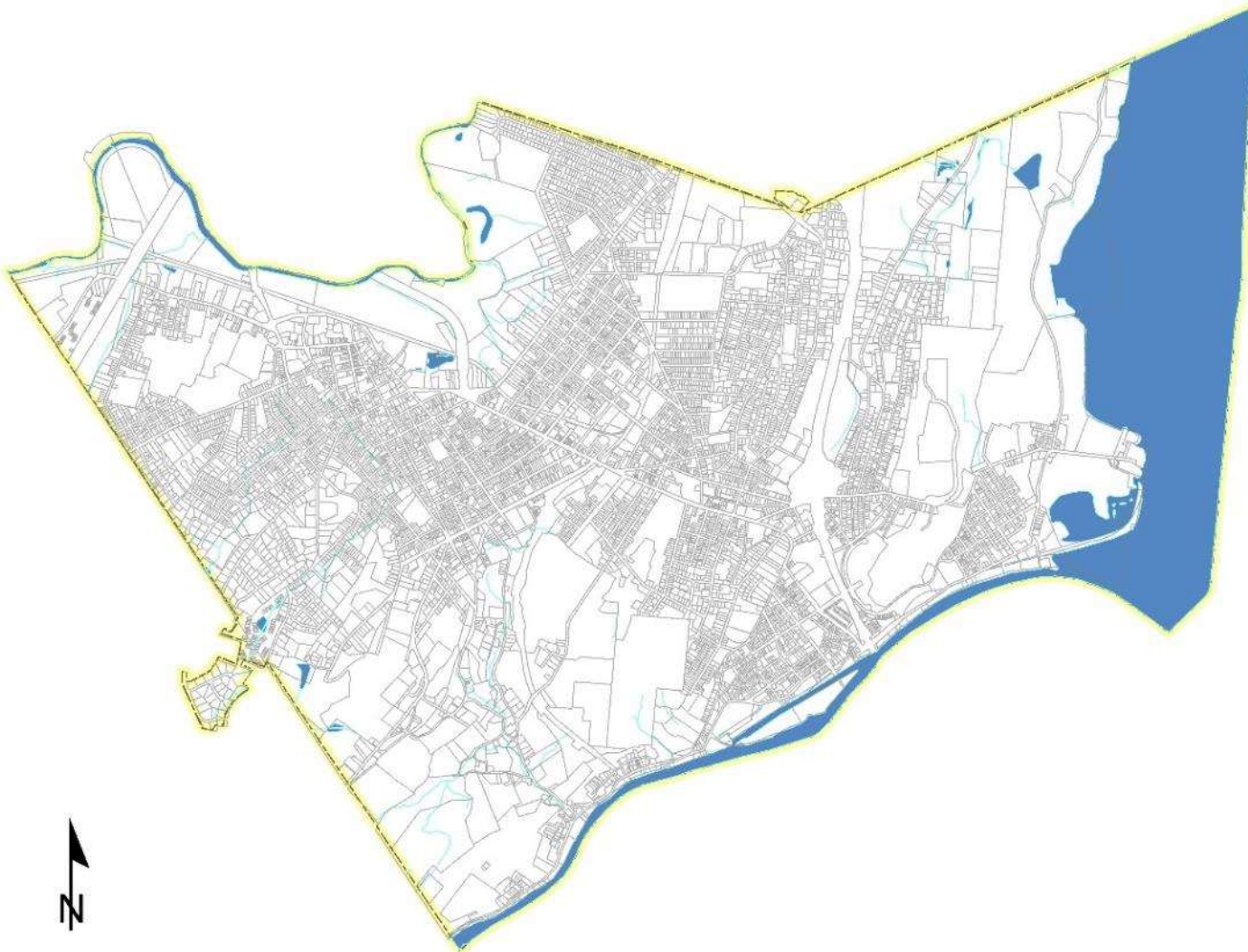


### PRINCIPLE AQUIFERS - AQUIFERS





### SURFACE WATER (RIVERS, STREAMS, PONDS) - SURFH20

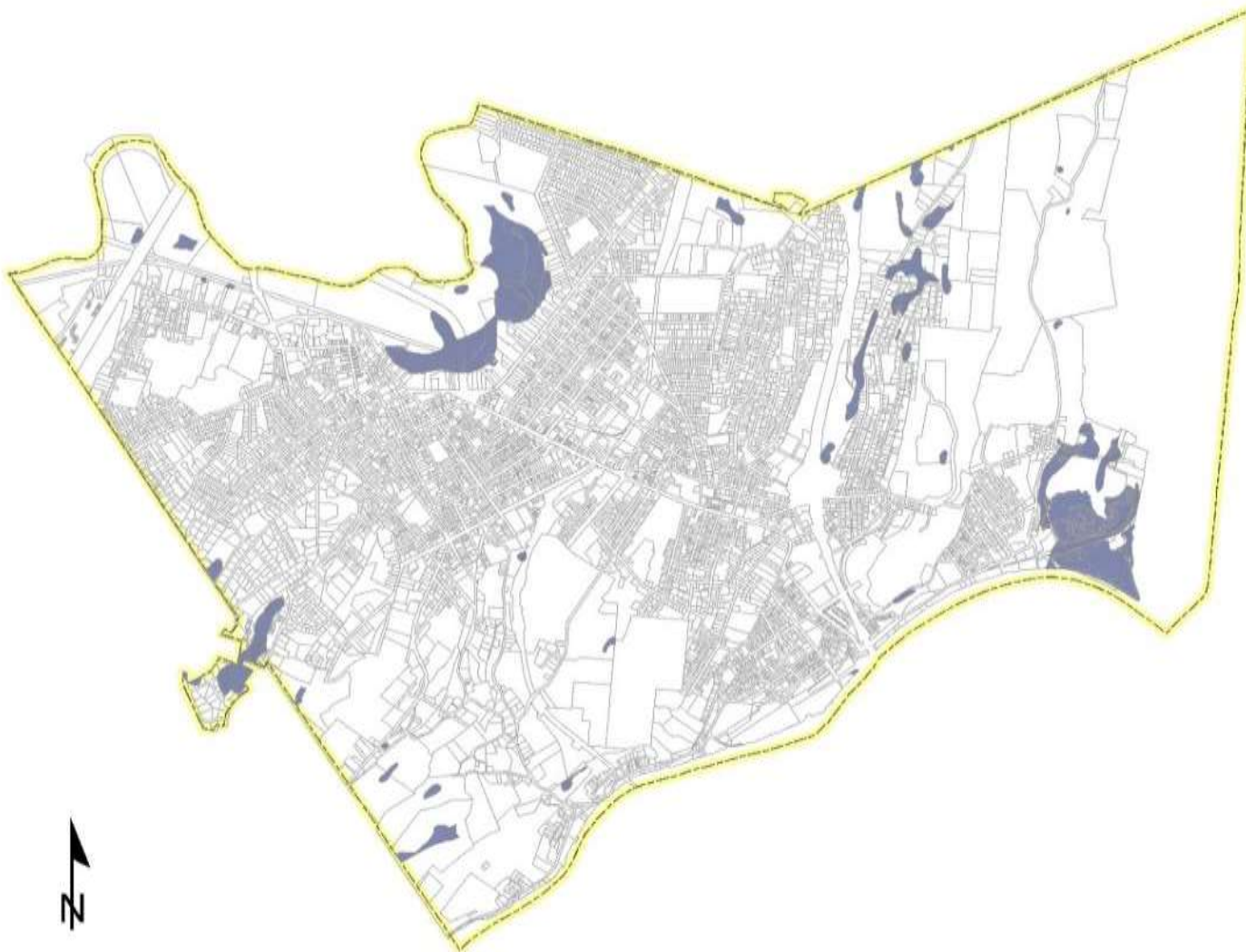


- Hudson River
- Rondout Creek
- Esopus Creek
- Twaalfskill Brook
- Spring Lake





### WETLANDS & HYDRIC SOILS - WETHYD



Important for filtering out pollutants from water

Help to mitigate flooding

Critical habitat areas

Hydric soils are permanently or seasonally saturated

Help with the formation of hydrophitic plants



# Kingston, NY

## OPEN SPACE PLAN



### RIPARIAN BUFFERS (50', Esopus 100') - RIPBUFFS



Vegetated areas adjacent to streams and rivers.

Helps to shade and protect waterway

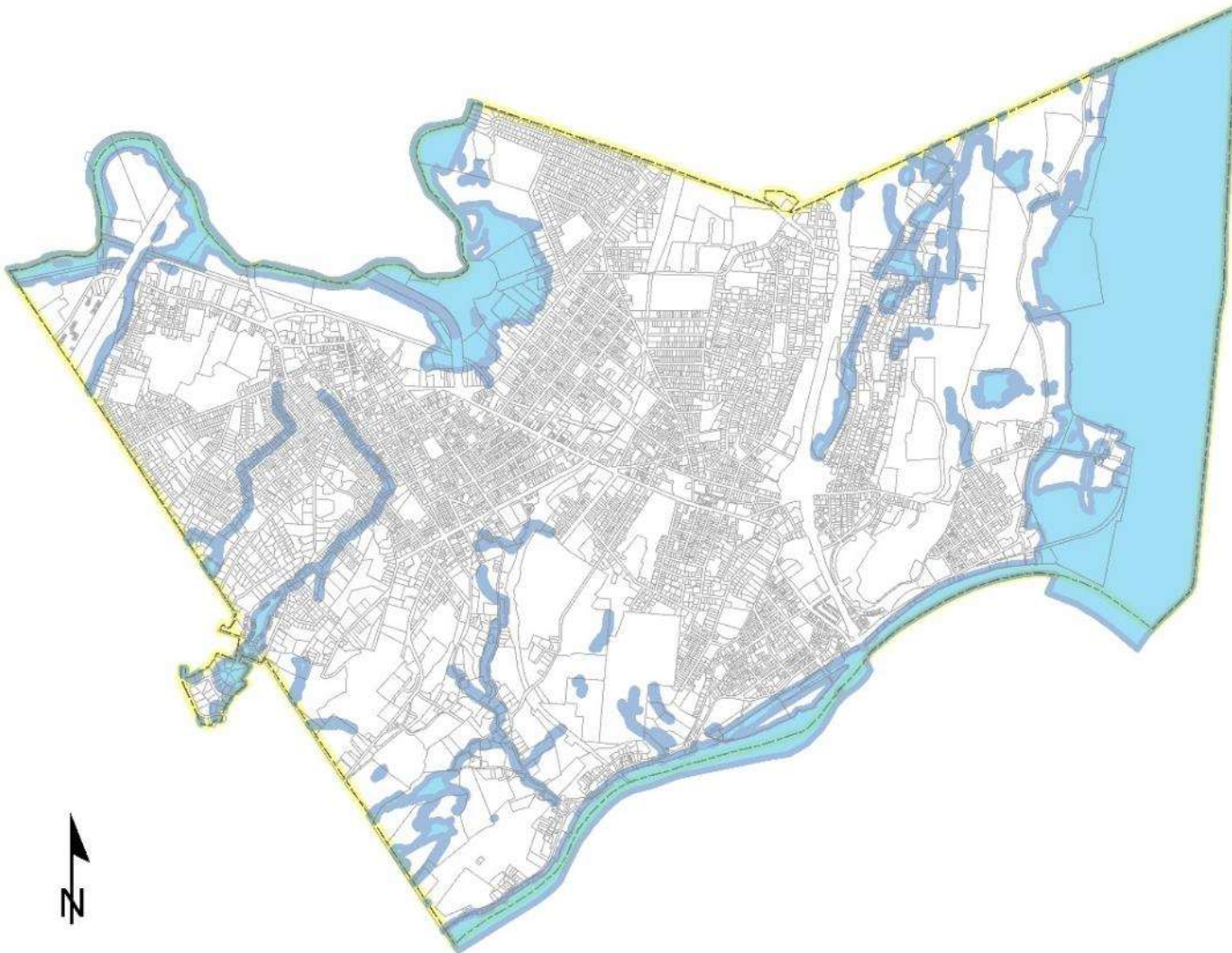
Filters pollutants

Protects local water quality.





### BIOLOGICALLY IMPORTANT AREA - AQUATIC (BIAA)



Contains areas identified with significant regional biological importance.

Aquatic habitats

Wetlands

Hardwood and shrub swamp

Riparian zones

Water bodies

Submerged aquatic vegetation

Water chestnut

Marsh

Rare plants



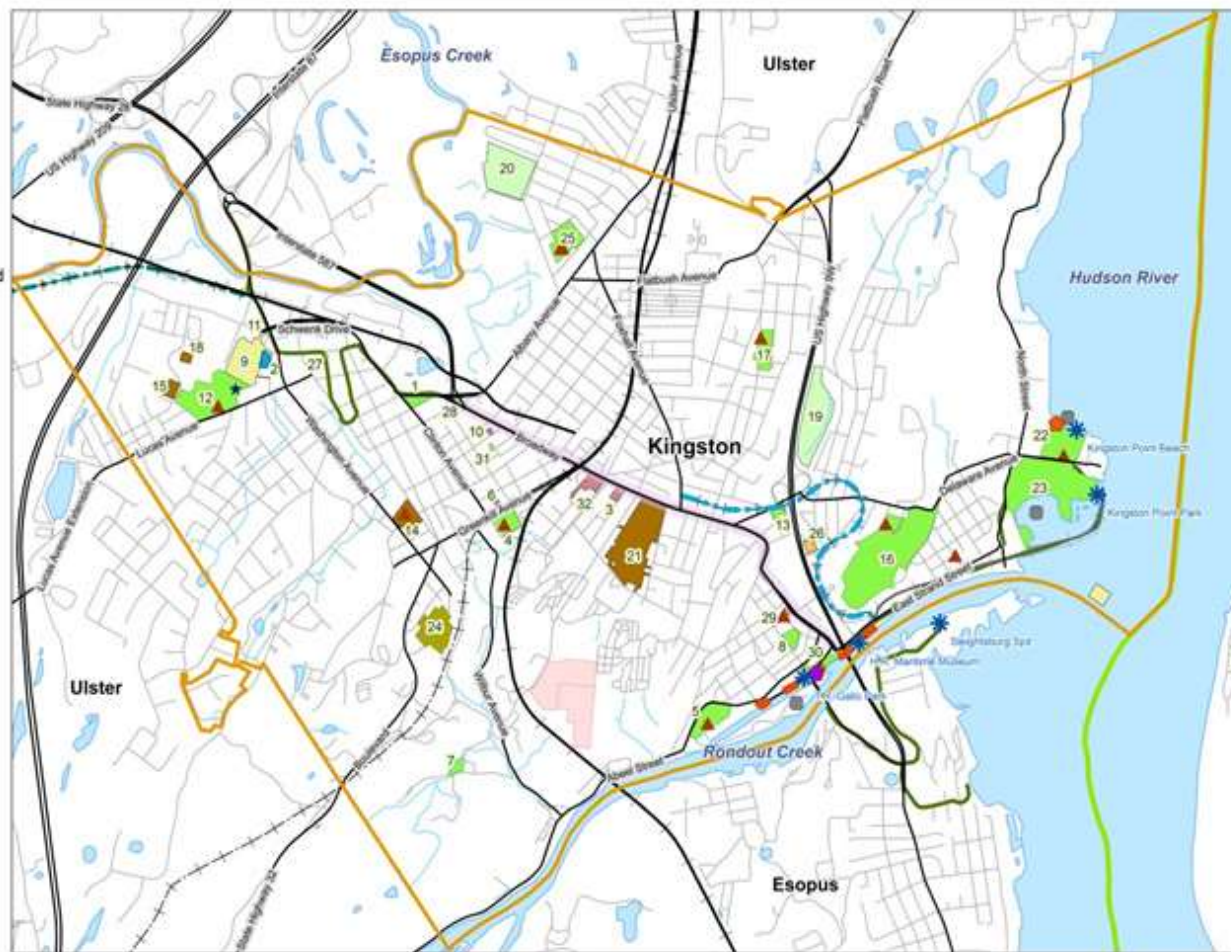
### Recreational Amenities of Kingston, NY

#### Legend

- City of Kingston
- Ulster County
- Rondout II Lighthouse (Restricted Access)
- Golf Courses
- Kingston Greenway Trails
- Kingston Point Rail Trail
- O&W Link Trail
- Rondout Promenade
- Major Roads & Arterials
- All Streets
- Rondout-Kingston Point Trolley Line
- Railroads
- Abandoned Historic Railroads
- Broadway Corridor
- Car Top Boat launch
- Small Craft Launch
- Fishing Access
- Hudson Valley Greenway Water Trail Sites
- Forsyth Nature Center
- Playgrounds
- Kingston Streams
- Waterbody
- Kingston Recreational Amenities**
- Ball Field
- Basketball Court
- Community Pool
- Neighborhood Center
- Park
- Parks Gone By
- School Area
- Stadium

#### Location Key

- 1= Academy Green
- 2= Andretta Pool
- 3= Andy Murphy Midtown Center
- 4= Barmann Park
- 5= Block Park
- 6= Boys & Girls Club
- 7= Clearwater Park
- 8= Cornell Parl
- 9= Dietz Stadium
- 10= Everett Hodge Center
- 11= Firemans Park
- 12= Forsyth Park
- 13= Fourth Ward Memorial
- 14= George Washinton School & Playground
- 15= Harry L. Edson Elementary School
- 16= Hasbrouck Park
- 17= Hutton Park
- 18= J. Watson Bailey Middle School
- 19= J.R. Schultz Complex
- 20= Kingston Armory
- 21= Kingston High School
- 22= Kingston Point Beach
- 23= Kingston Point Park
- 24= Lawton Park
- 25= Loughran Park
- 26= Murray Street Basketball Courts
- 27= Peace Park
- 28= Policemans Park
- 29= Rondout Neighborhood Center
- 30= T.R. Gallo Park
- 31= Van Buren Street Park
- 32= YMCA



#### Recreational Map of Kingston, NY

Recreational amenities of the City of Kingston, Ulster County, New York. The primary data sets were from Kingston Parks and Recreation Department knowledge, records and data derived from the Recreational Master Plan. Greenway data is from the Hudson River Valley Greenway. This map was produced as part of a Natural Resources Inventory for the City of Kingston. For more information refer to the complete data inventory or contact Kingston Conservation Advisory Council. (845) 481-7339, [kingstonCAC@kingston-ny.gov](mailto:kingstonCAC@kingston-ny.gov), <http://kingston-ny.gov/kingstoncac>

June 2016



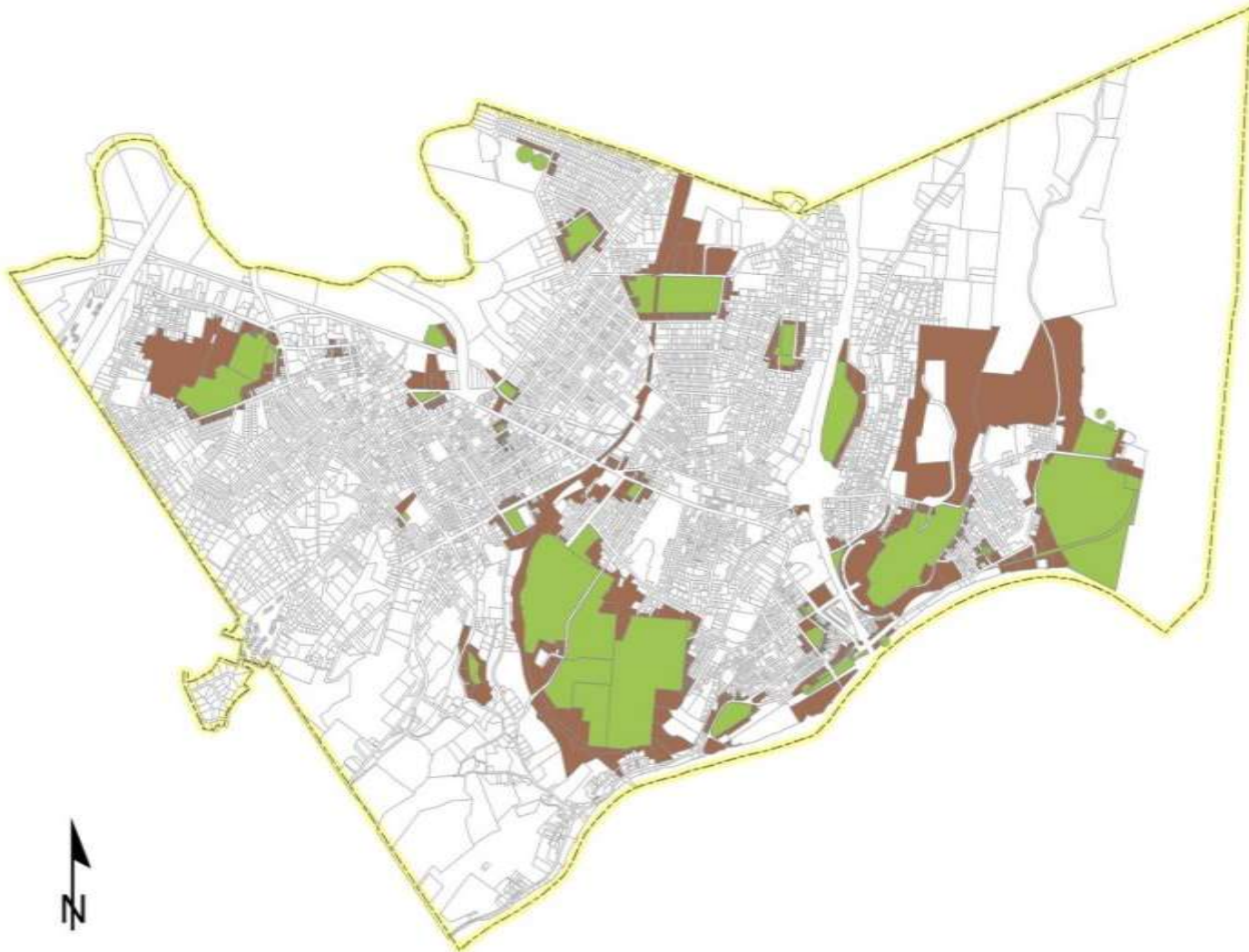
1:15,000







### PARCELS (Brown) ADJACENT TO PARKS (Green) - PARKADJ



Includes parks and playgrounds

Cemeteries

Also indicates surrounding parcels which may be of interest



### PARCELS ADJACENT TO HISTORICAL - HISTADJ



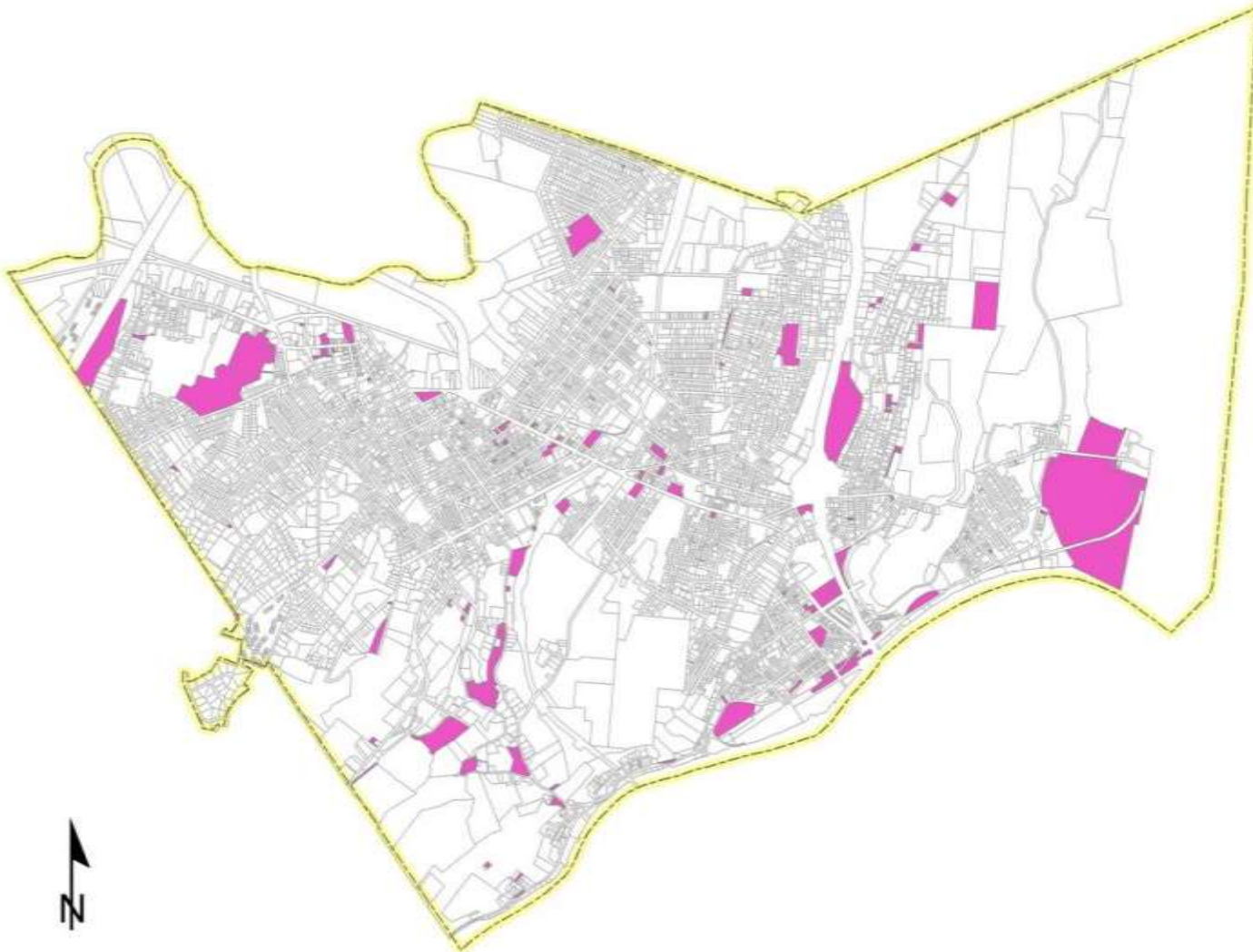
Includes protected historical property, district or feature

Also includes adjacent parcels which may be of interest





### CITY OF KINGSTON OWNED PARCELS - COKOWND

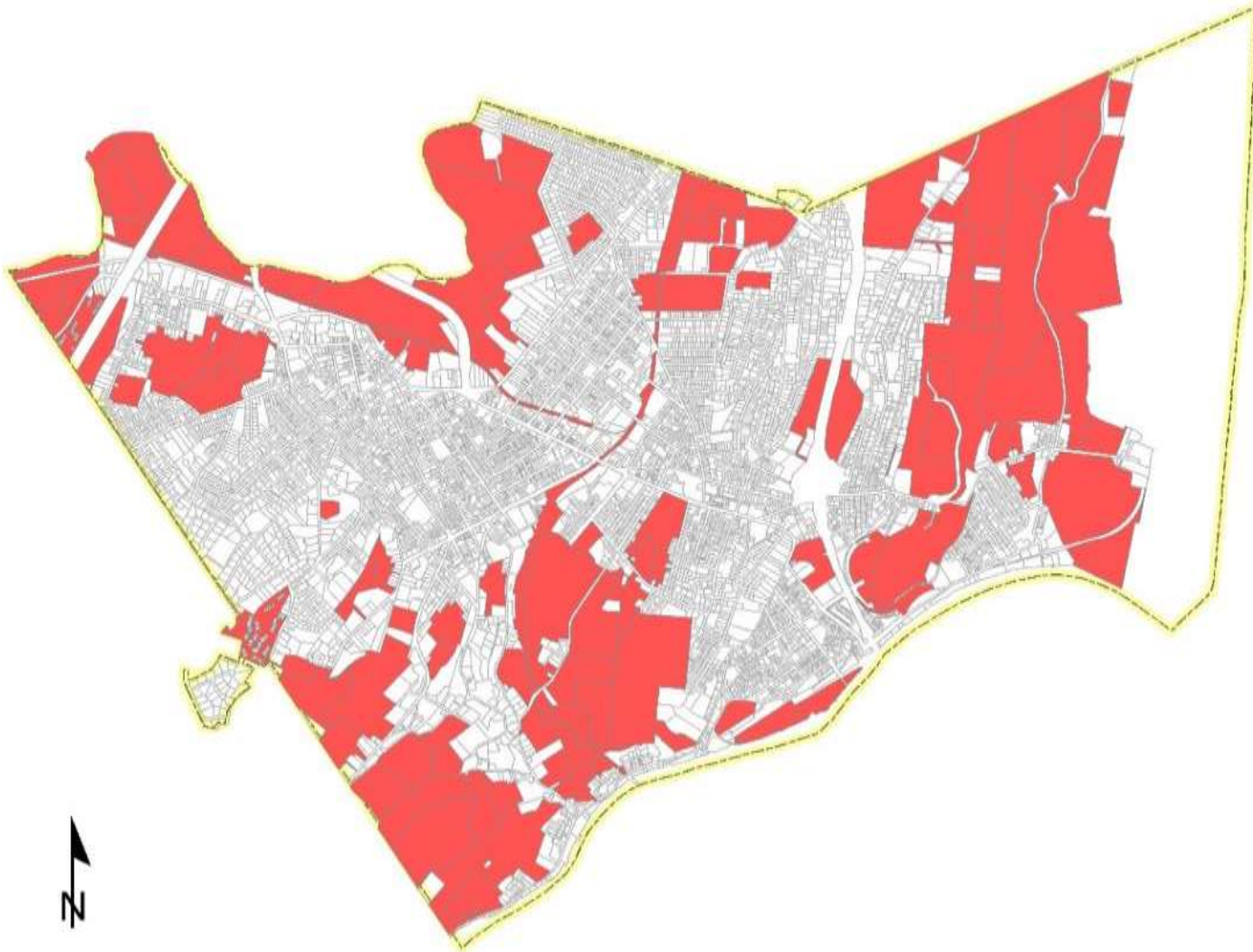


Properties owned by the City of Kingston

May have opportunity for future parks or open space



CITY OF KINGSTON PARCELS  $\geq$  5AC - PCLGTEQ5AC







### Vacant Parcels of Kingston, NY

#### Legend

- City of Kingston
- Vacant Parcels 2017
- Kingston Parcels 2017
- Ulster County
- Major Roads & Arterials
- All Streets
- Railroads
- Abandoned Historic Railroads
- Rondout-Kingston Point Trolley Line
- Kingston Streams
- Waterbody



**Vacant Parcels of Kingston, NY**

Vacant parcels in the City of Kingston, Ulster County, New York. The data set was derived from tax parcels from the Ulster County GIS Database from their 2017 release. This map was produced as part of a Natural Resources Inventory for the City of Kingston. For more information refer to the complete data inventory or contact Kingston Conservation Advisory Council. (845) 481-7339, [kingstonCAC@kingston-ny.gov](mailto:kingstonCAC@kingston-ny.gov), <http://kingston-ny.gov/kingstoncac>

June 2018

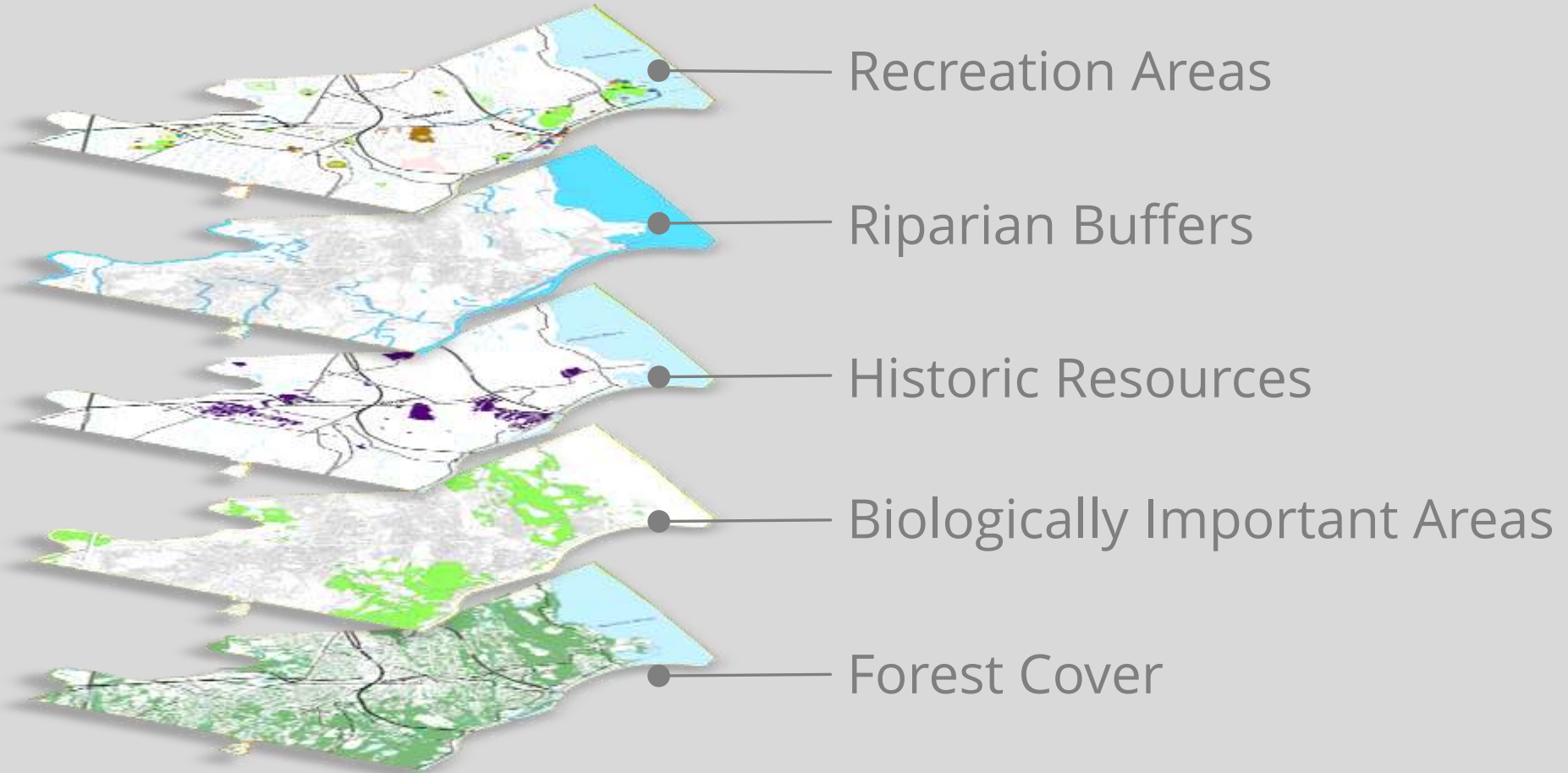


1:16,352





### Using The Inventory - Spatial Analysis



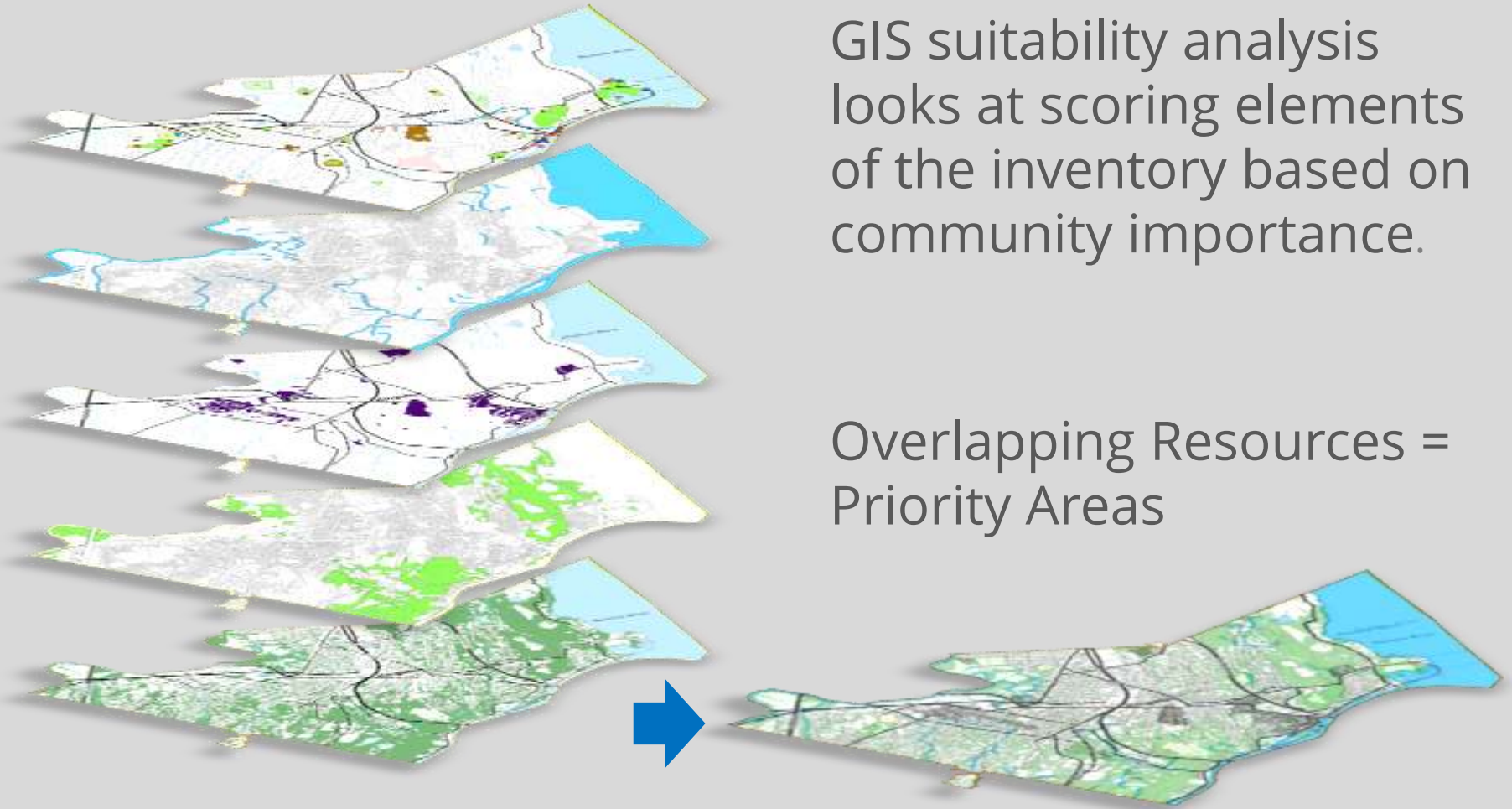




## Using The Inventory - Spatial Analysis

GIS suitability analysis looks at scoring elements of the inventory based on community importance.

Overlapping Resources = Priority Areas

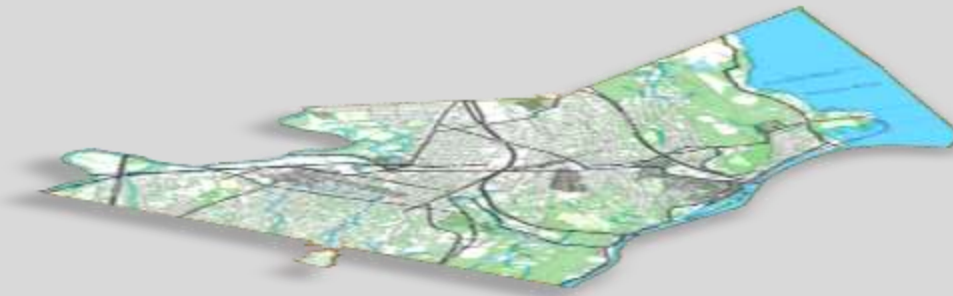




## Using The Inventory – Spatial Analysis

This provides us with a technical assessment of resource priority areas...

...but we need **you** to help us identify priorities and specific areas or ideas which are important to the community.







## Two Exercises Tonight

**Prioritization of Resources** – How much do you value the protection / improvement of the different natural and cultural resources in Kingston?

**Table Mapping Discussions** – Discussions at individual tables about specific areas of the city.

- Kingston City Overall
- Downtown Kingston – urban center

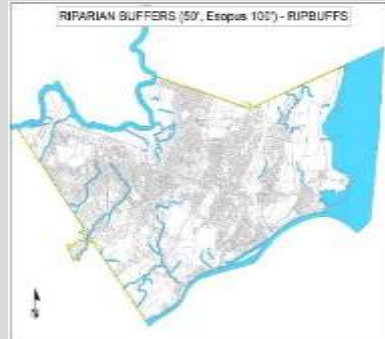


### Prioritization of Resources

FORESTS



RIPARIAN BUFFERS



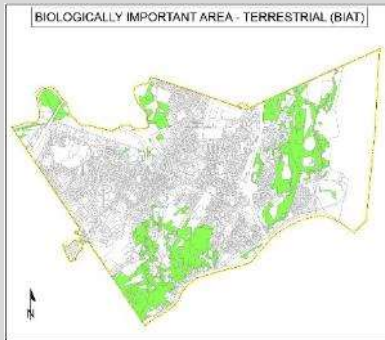
PARKLAND



HISTORIC SITES



LAND BIOLOGY



RECREATION AMENITIES



AQUATIC BIOLOGY



Where would you spend money to preserve / improve?





### Prioritization of Resources

\$120  
To Spend

● = \$10

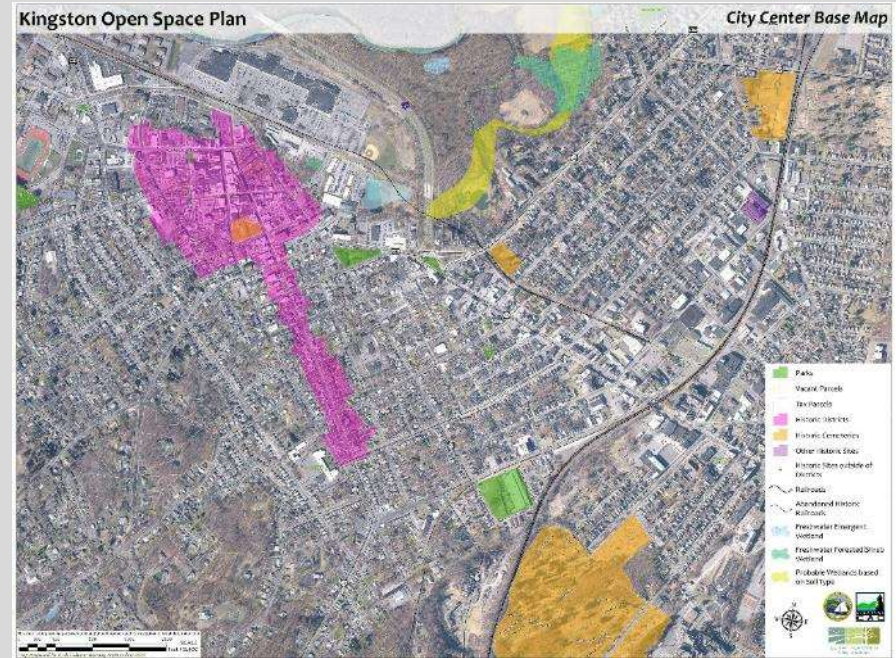
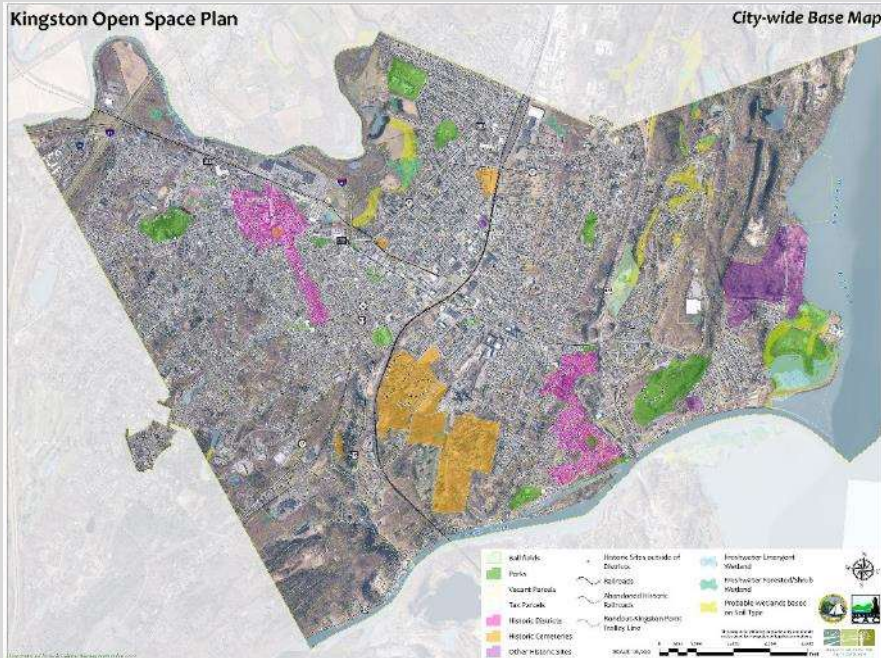
RESOURCE PRIORITIZATION				
<b>PARKS &amp; RECREATION AREAS</b> 	<b>HISTORIC &amp; CULTURAL SITES</b>	<b>TRAILS &amp; BIKE-HIKE PATHS</b>	<b>OPEN FIELDS &amp; FORESTED AREAS</b>	<b>URBAN AGRICULTURE</b>
<b>HUDSON RIVER SHORELINE</b>	<b>ESOPUS &amp; RONDOUT CREEKS</b>	<b>PONDS, WETLANDS &amp; STREAMS</b>	<b>SCENIC VIEWS</b>	<b>STREET TREES &amp; STREETSAPES</b>



## Table Mapping Discussions

### City Overall

### City Center







## Table Mapping Discussions

- Draw on maps with markers and pens
- Make comments with sticky-notes
- Discussion questions provided at each table
- Throughout this period, vote on resource priorities
- Meet back here @ 7pm
- Questions?





## Prioritization & Table Discussions





## SIGNIFICANT HABITATS IN SELECTED AREAS OF THE CITY OF KINGSTON, ULSTER COUNTY, NY

Hudson Ltd  
P.O. Box 5000  
Annandale, NY 12504  
www.hudson.org

CAG

Hudson River Estuary

**An important caution:**  
This map is suitable for general land-use planning, but is not suitable for detailed planning and site design, or for jurisdictional determinations (e.g., for wetlands). Boundaries of wetlands and other habitats depicted here are only approximate.

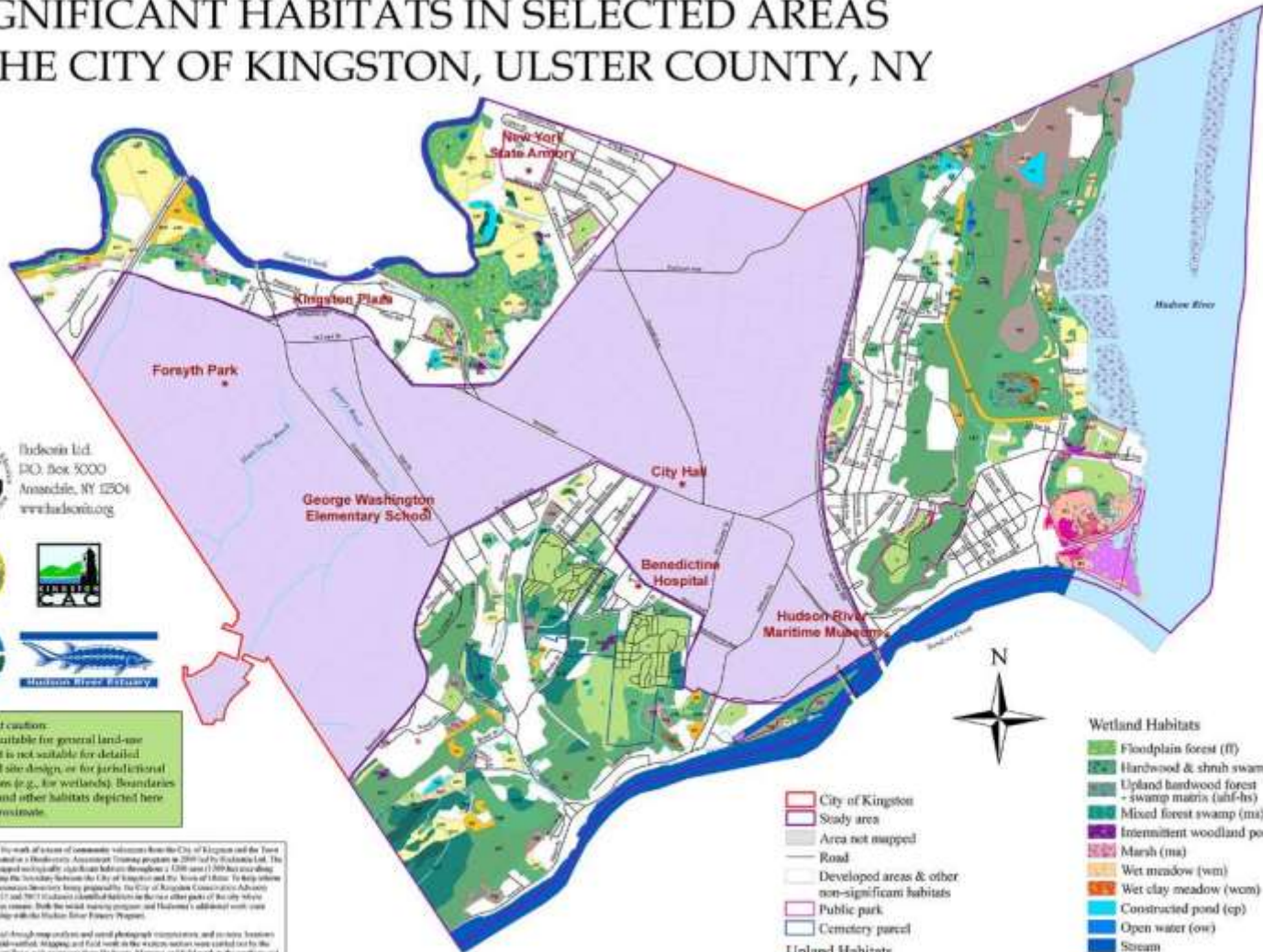
This map is part of the work of a team of consultants selected from the City of Kingston and the Town of Ulster via participation in the Hudson Valley Association (HVA) program in 2009 and by Hudson Ltd. The team identified and mapped ecologically significant habitats throughout a 1300-acre (1000 ha) study along the Hudson River, including the territory between the City of Kingston and the Town of Ulster. To help inform a city-wide Natural Resources Inventory being prepared by the City of Kingston Conservation Advisory Council (CAC) in 2017 and 2018, this map identifies habitats in the two other parts of the city where substantial habitat were known. Both the local mapping companies and Hudson's consulting work were carried out in partnership with the Hudson River Estuary Program.

Habitats were identified through map analysis and aerial photograph interpretation, and on-site inspections as practicable were field-verified. Mapping and field work in the western section were carried out by the Benedictine Assessment Team in 2011, consisting of Hudson, Mapping and Field work in the southern and eastern sections were carried out by the Hudson River Estuary Program (HREP) staff (C. G. G. and C. G. G.). Color aerial photographs in the HREP system, taken in spring 1994 (scale 1:80,000), were used for non-wetland photo interpretation. Habitat maps were digitized in ArcGIS 10.0.2. Wetland boundaries were digitized in spring 2009 and 2008 and overlaid on the 1994 aerial photographs. Habitat data for Hudson River subaquatic vegetation (1987) and other wetlands (2007) provided by the NYDEC Hudson River Estuary Program were overlaid from the Hudson River National Wetlands Research Network.

The report prepared by the Hudson Valley Association (HVA) team in consultation with the western partners of the map (Hudson et al. 2009, "Ecology, Wetland, and Open Space Inventory Report"), explains the habitat identification and mapping methods, describes the ecological significance of many of the habitat types shown on this map, and offers conservation recommendations.

This project has been funded by the New York State Environmental Foundation Fund through the Hudson River Estuary Program of the New York State Department of Environmental Conservation.

For more information, contact Mike Nicks, Chief of Estuary Conservation Advisory Council (Email: MikeNicks@hudson.org), or Graham Stevens, Hudson Ltd (Email: GStevens@hudson.org).



1:10,000

0 0.5 1 Kilometer

0 0.5 1 Mile

- City of Kingston
- Study area
- Area not mapped
- Road
- Developed areas & other non-significant habitats
- Public park
- Cemetery parcel

- Upland Habitats**
- Upland hardwood forest (uhf)
- Upland mixed forest (umf)
- Upland conifer forest (ucf)
- Rocky barren (rb)
- Upland shrubland (us)
- Upland meadow (um)
- Cultural (c)
- Waste ground (wg)
- Calcareous crest, ledge, & talus

- Wetland Habitats**
- Floodplain forest (ff)
- Hardwood & shrub swamp (hs)
- Upland hardwood forest - swamp matrix (uhf-hs)
- Mixed forest swamp (ms)
- Intermittent woodland pool (iwg)
- Marsh (ma)
- Wet meadow (wm)
- Wet clay meadow (wcm)
- Constructed pond (cp)
- Open water (ow)
- Stream

- Tidal Habitats**
- Hudson River
- Submerged aquatic vegetation
- Lower intertidal mix
- Upper intertidal mix
- Water chestnut
- Common reed
- Cutail



## Next Steps – After Tonight

- Document and review input from tonight
- Review ideas and priorities with CAC
- Move forward with development of draft plan





## Anticipated Schedule

Part	Description	Anticipated Timeline
1	<b>Project Kickoff &amp; Analysis</b> <i>CAC Meeting &amp; Public Outreach Plan</i>	July – August 2018
2	<b>Public Meeting 1 - Vision</b> <i>Develop preliminary priorities and ideas</i>	September 2018
3	<b>Draft Plan Prepared</b> <i>Review plan with CAC</i>	Nov – Dec 2018
4	<b>Public Meeting 2 – Draft Plan</b> <i>Update plan based on comments</i>	Jan 2019
5	<b>Present Final Plan</b> <i>Adoption and implementation</i>	Spring 2019





## Next Steps – After Tonight

Additional comments or suggestions can be sent to the CAC at:

[CAC@Kingston-ny.gov](mailto:CAC@Kingston-ny.gov)

Comments open until  
October 9<sup>th</sup>.





Thank you.

*This project was funded in part by a grant from the Hudson River Estuary Program, a program of the New York State Department of Environmental Conservation with funding provided by the NYS Environmental Protection Fund.*



112 Spring Street, Suite 305  
Saratoga Springs, NY 12866

151 South Main Street, Suite  
200  
New City, NY 10956

[www.behanplanning.com](http://www.behanplanning.com)