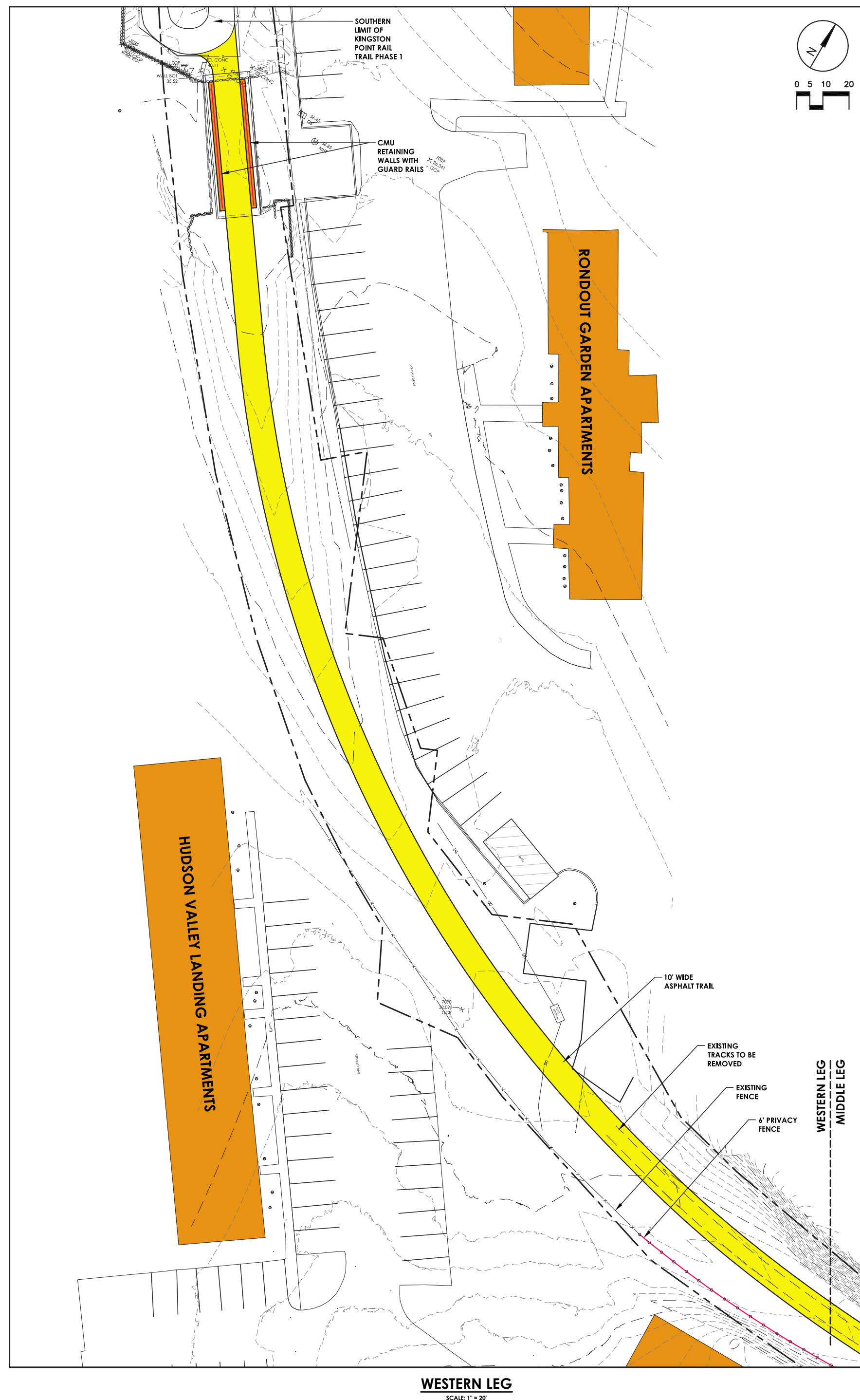


WW WEAVING THE WATERFRONT KINGSTON

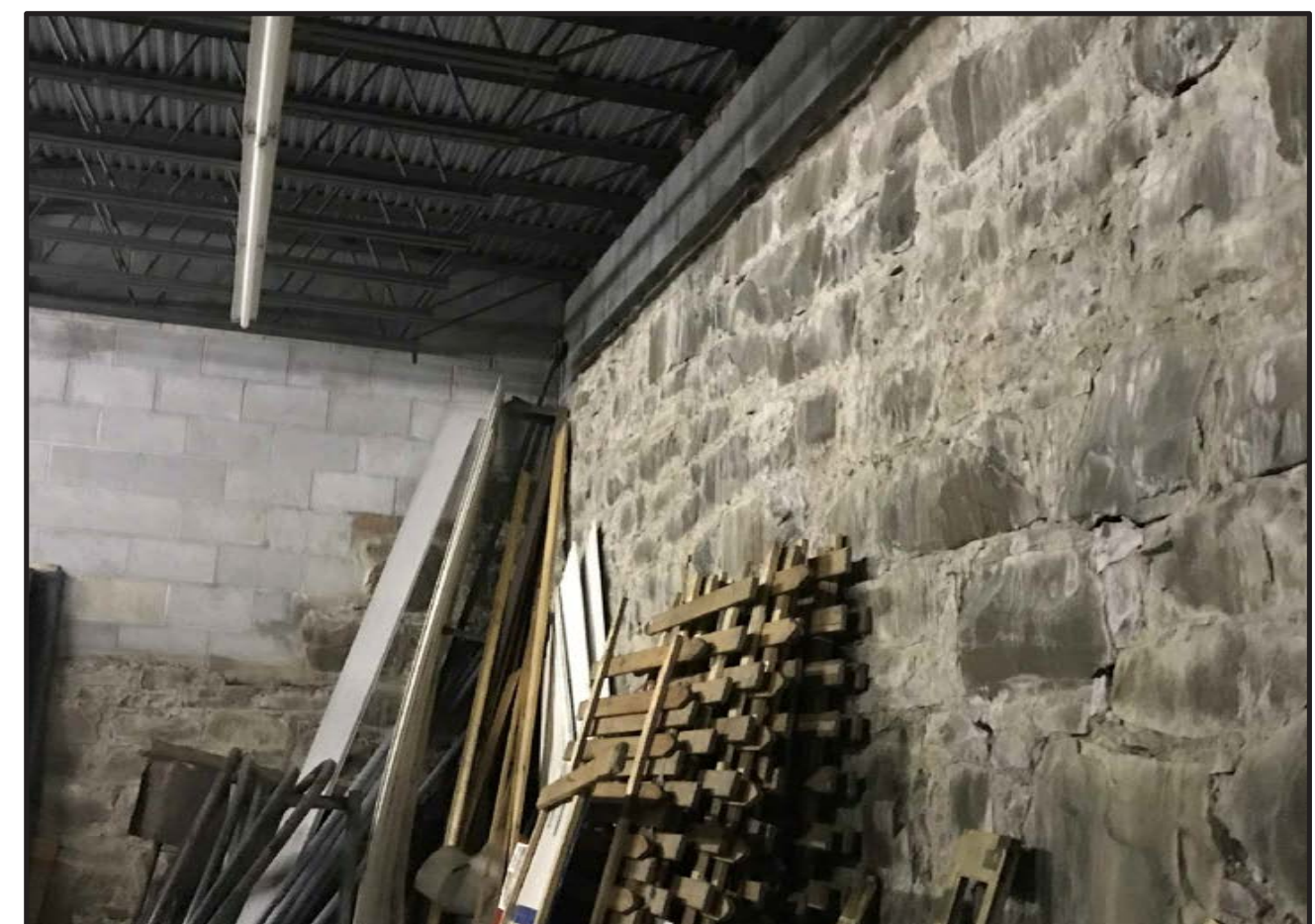
Kingston Point Rail Trail Phase 2 Preliminary Design Concept



WEST SIDE OF TROLLEY MUSEUM - VIEW EAST



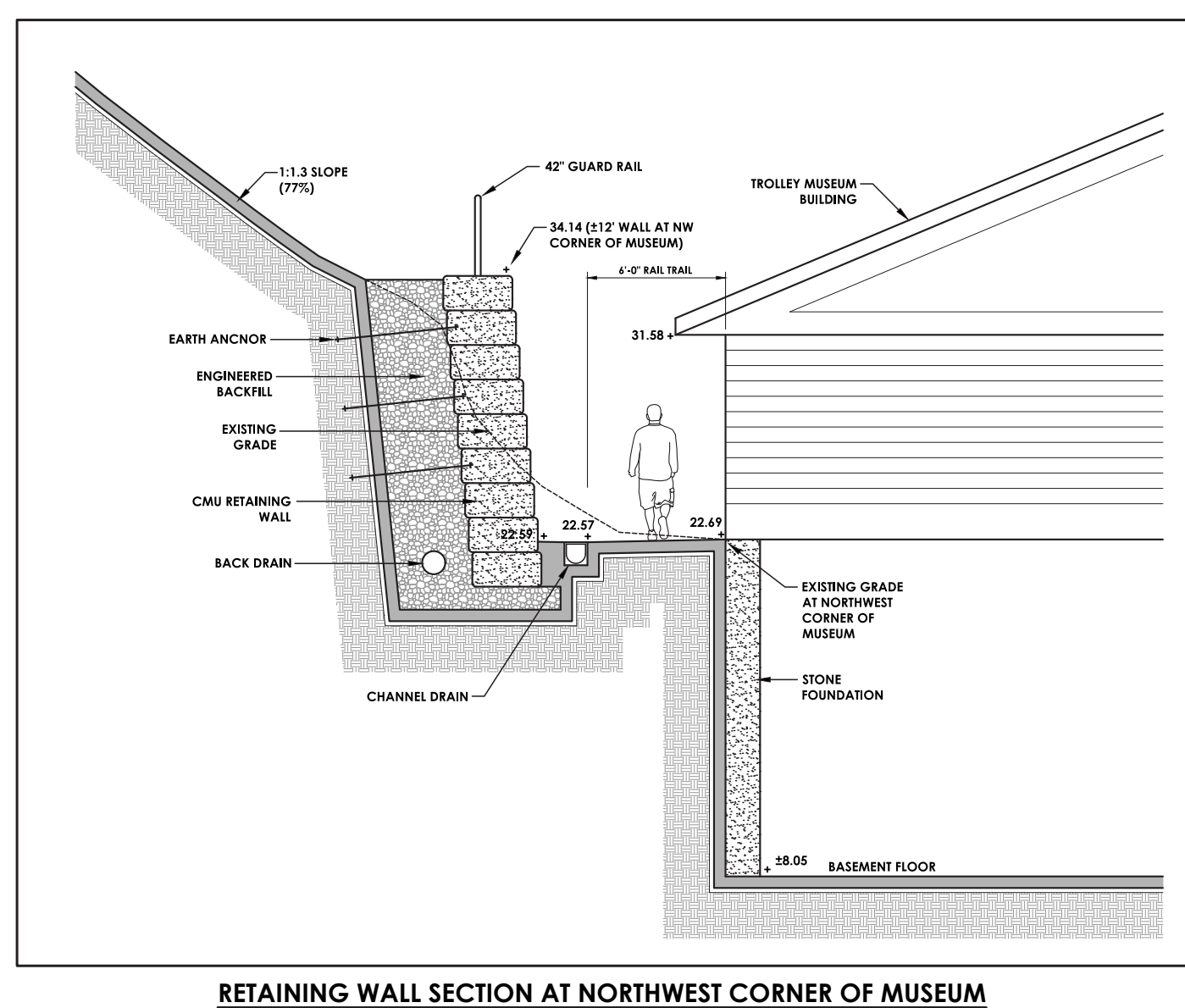
NORTH SIDE OF TROLLEY MUSEUM - VIEW EAST



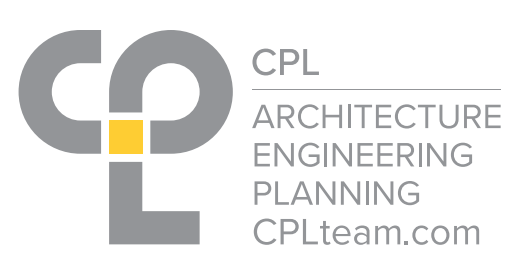
NORTHWEST CORNER OF TROLLEY MUSEUM - BASEMENT



NORTH SIDE OF TROLLEY MUSEUM - VIEW WEST



RETAINING WALL SECTION AT NORTHWEST CORNER OF MUSEUM
SCALE 1/4" = 1'-0"

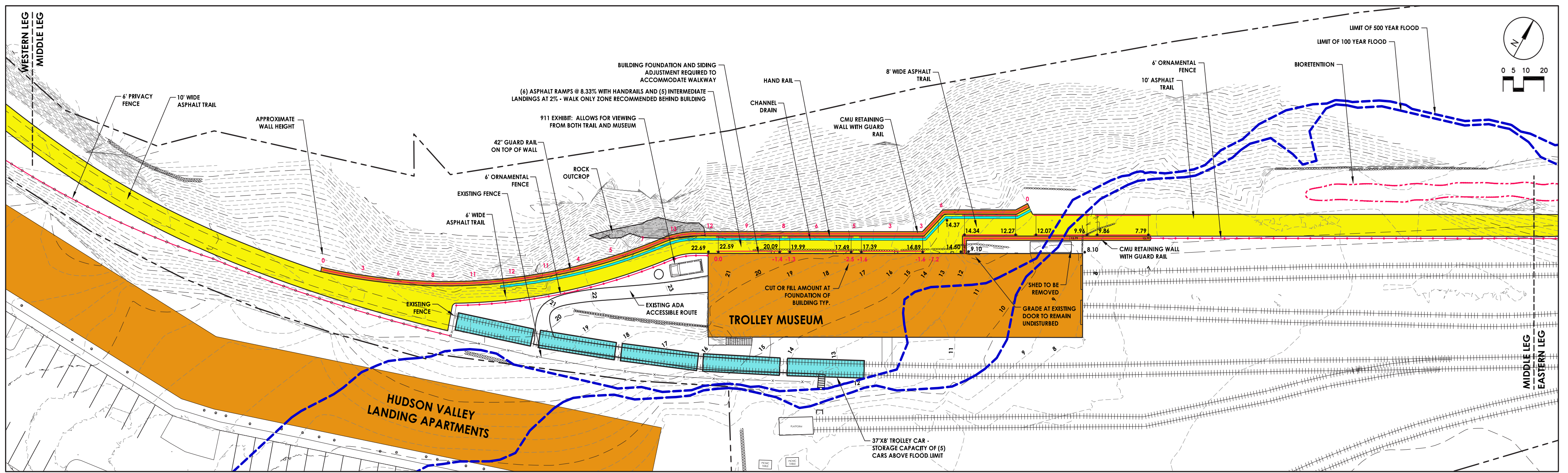


Funding for these projects has been provided by the New York State Department of State and the New York State Office of Parks, Recreation, and Historic Preservation under Title 11 and 9 of the Environmental Protection Fund, and by the New York State Department of Environmental Conservation, in cooperation with the New England Interstate Water Pollution Control Commission and Hudson River Estuary Program.

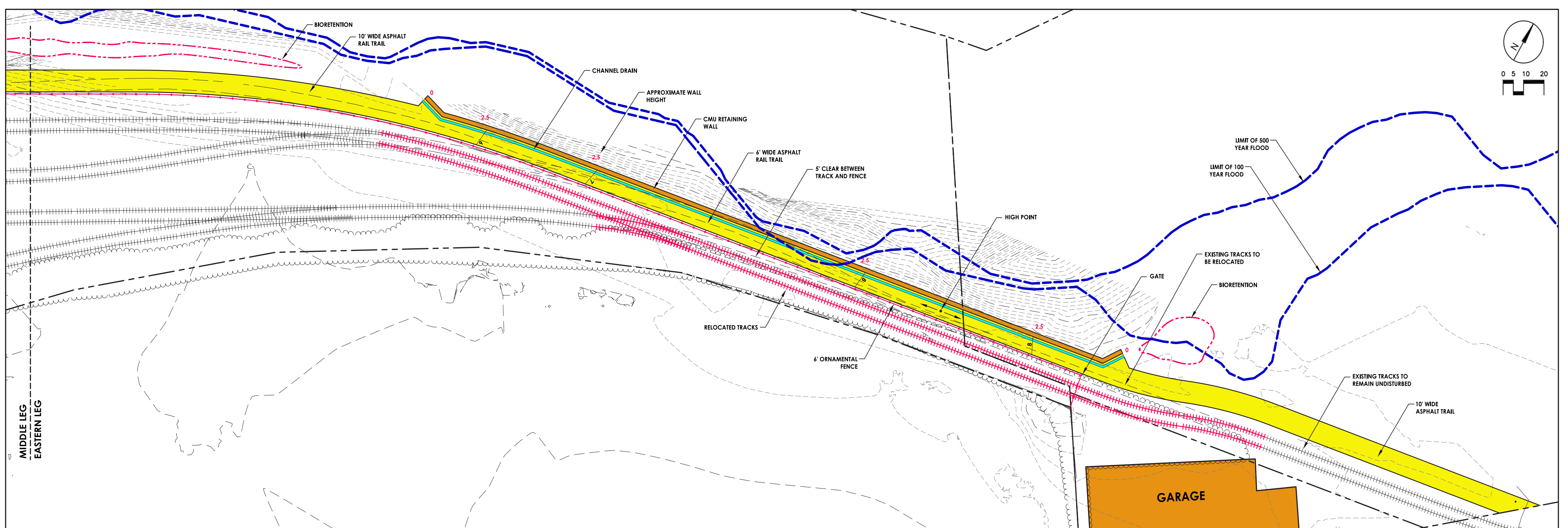


WEAVING THE WATERFRONT KINGSTON

Kingston Point Rail Trail Phase 2 Preliminary Design Concept

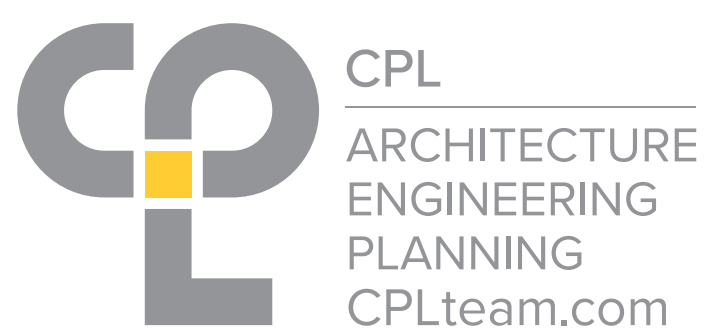


MIDDLE LEG
SCALE 1" = 20'



EASTERN LEG
SCALE 1" = 20'

TRAIL ALIGNMENT NO.1 (SHEET 2 OF 2)
KINGSTON POINT RAIL TRAIL PHASE 2
OCTOBER 7, 2019



Funding for these projects has been provided by the New York State Department of State and the New York State Office of Parks, Recreation, and Historic Preservation under Title 11 and 9 of the Environmental Protection Fund, and by the New York State Department of Environmental Conservation, in cooperation with the New England Interstate Water Pollution Control Commission and Hudson River Estuary Program.

