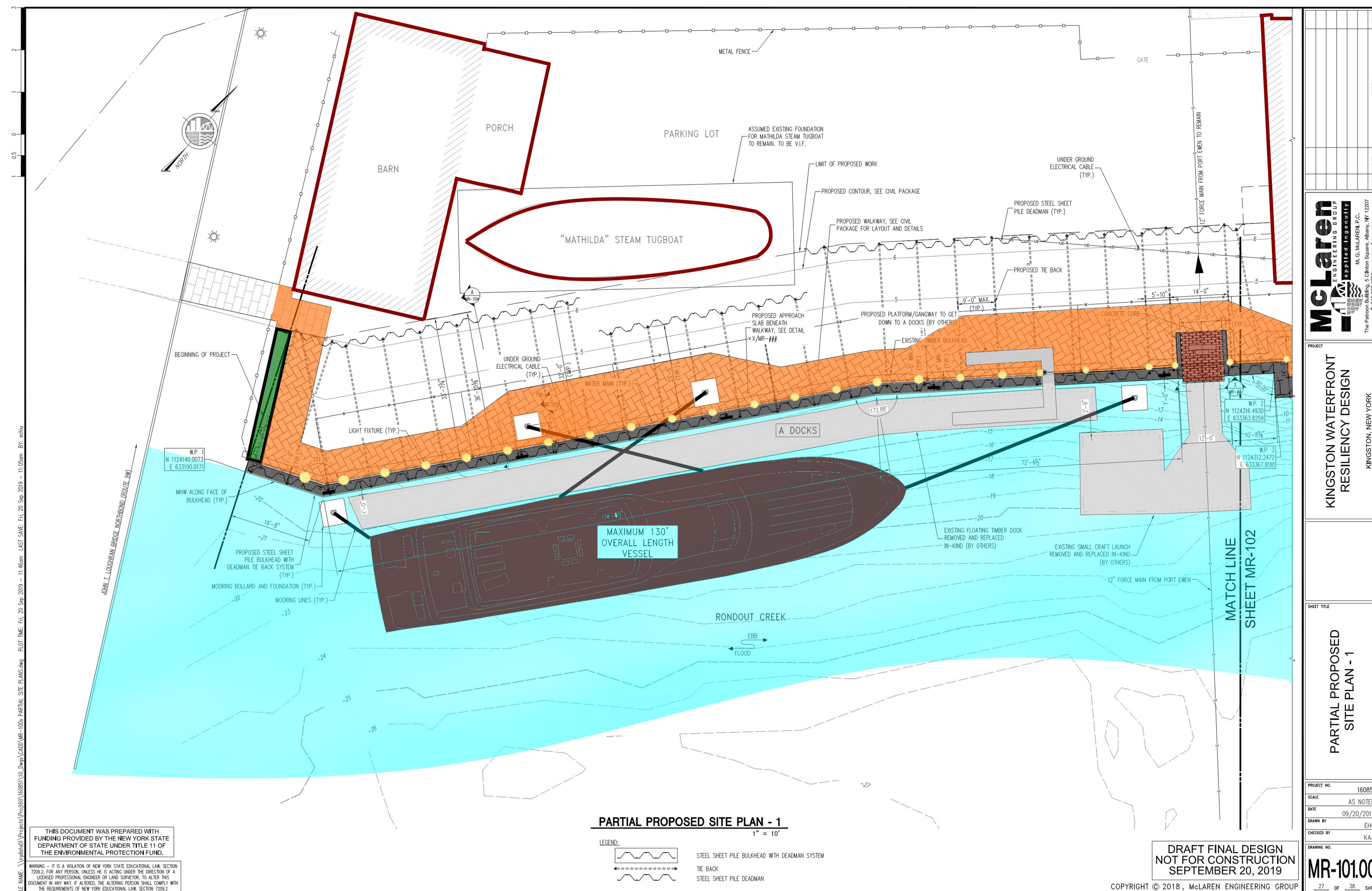


WEAVING THE WATERFRONT KINGSTON

Waterfront Resiliency Design



Hudson River Maritime Museum A-Dock

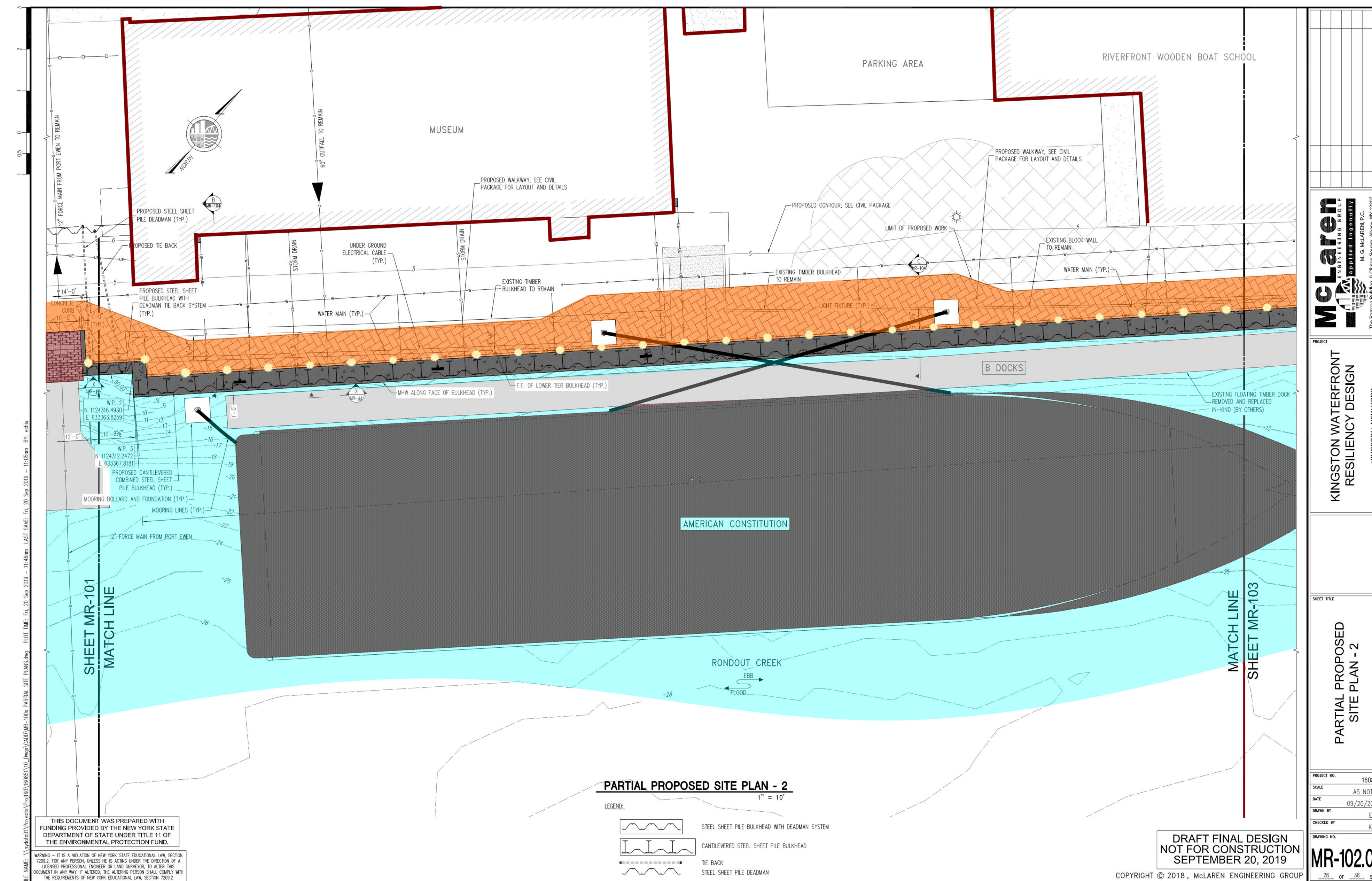
- Existing timber wall to be replaced with a new steel sheet pile wall with concrete cap
- Top of wall will be raised 18" for increased resiliency, top of wall elev. 6.5'
- Wall designed for potential to raise an additional 18" (elev. 8.0') for future further resiliency
- Separate mooring for larger vessels
- 10' min. walkway along the length of replacement wall, connect to existing walkway under 9-W
- Bollard lighting along length of replacement wall with integral removable rope for fall protection
- Accommodate HRMM structure for ADA access to A-Dock
- Access to existing rowing dock maintained

Funding for these projects has been provided by the New York State Department of State and the New York State Office of Parks, Recreation, and Historic Preservation under Title 11 and 9 of the Environmental Protection Fund, and by the New York State Department of Environmental Conservation, in cooperation with the New England Interstate Water Pollution Control Commission and Hudson River Estuary Program.



WEAVING THE WATERFRONT KINGSTON

Waterfront Resiliency Design



Hudson River Maritime Museum B-Dock

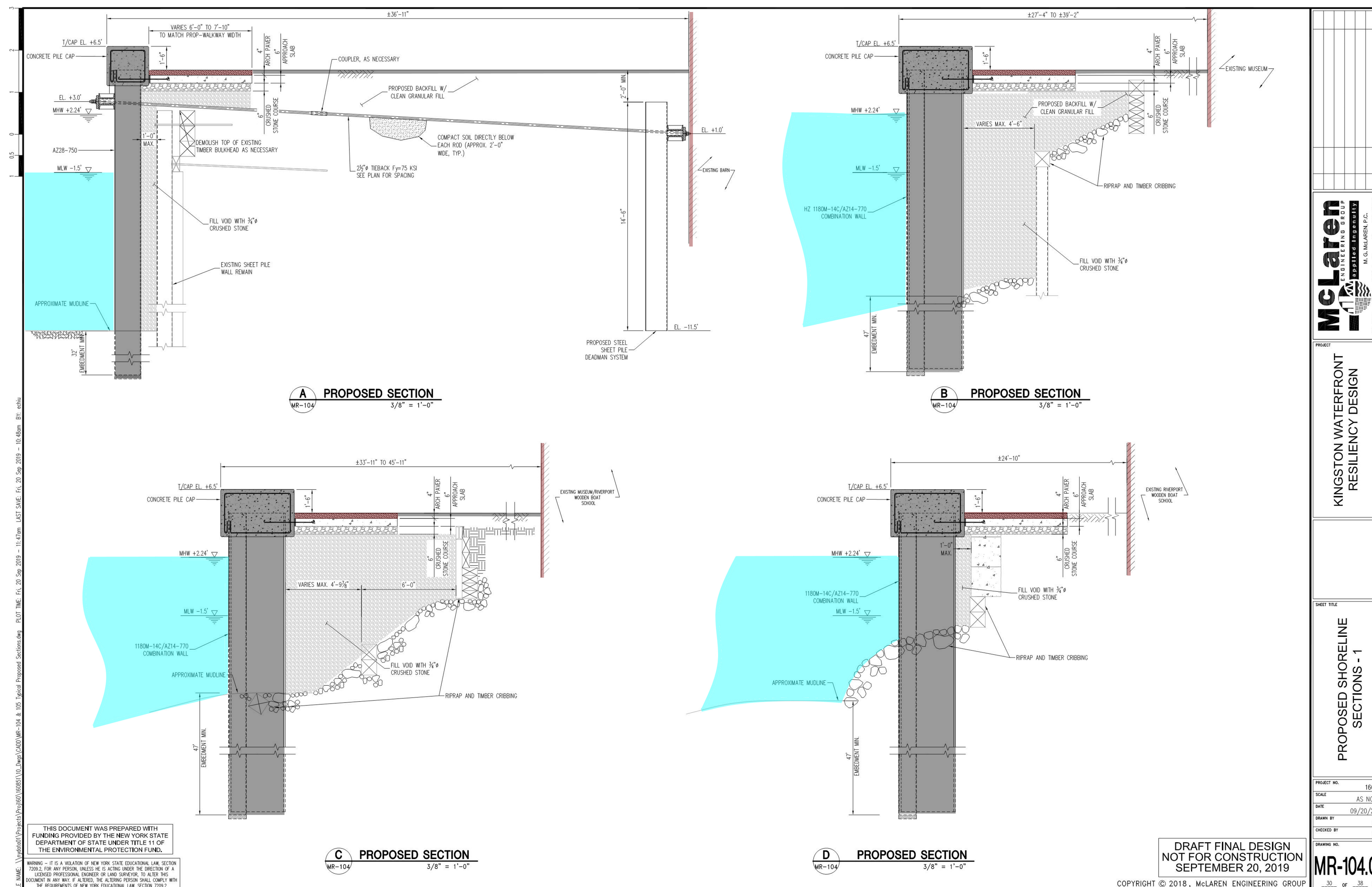
- Existing wall to be replaced with a new steel sheet pile wall with concrete cap
- Top of wall will be raised 18" for increased resiliency, top of wall elev. 6.5'
- Wall designed for potential to raise an additional 18" (elev. 8.0') for future further resiliency
- Separate mooring for larger vessels
- 10' min. walkway along the length of replacement wall
- Bollard lighting along length of replacement wall with integral removable rope for fall protection
- Provide for accommodation of HRMM structure for ADA access to B-Dock

Funding for these projects has been provided by the New York State Department of State and the New York State Office of Parks, Recreation, and Historic Preservation under Title 11 and 9 of the Environmental Protection Fund, and by the New York State Department of Environmental Conservation, in cooperation with the New England Interstate Water Pollution Control Commission and Hudson River Estuary Program.



WEAVING THE WATERFRONT KINGSTON

Waterfront Resiliency Design



Sheet Pile Wall Sections

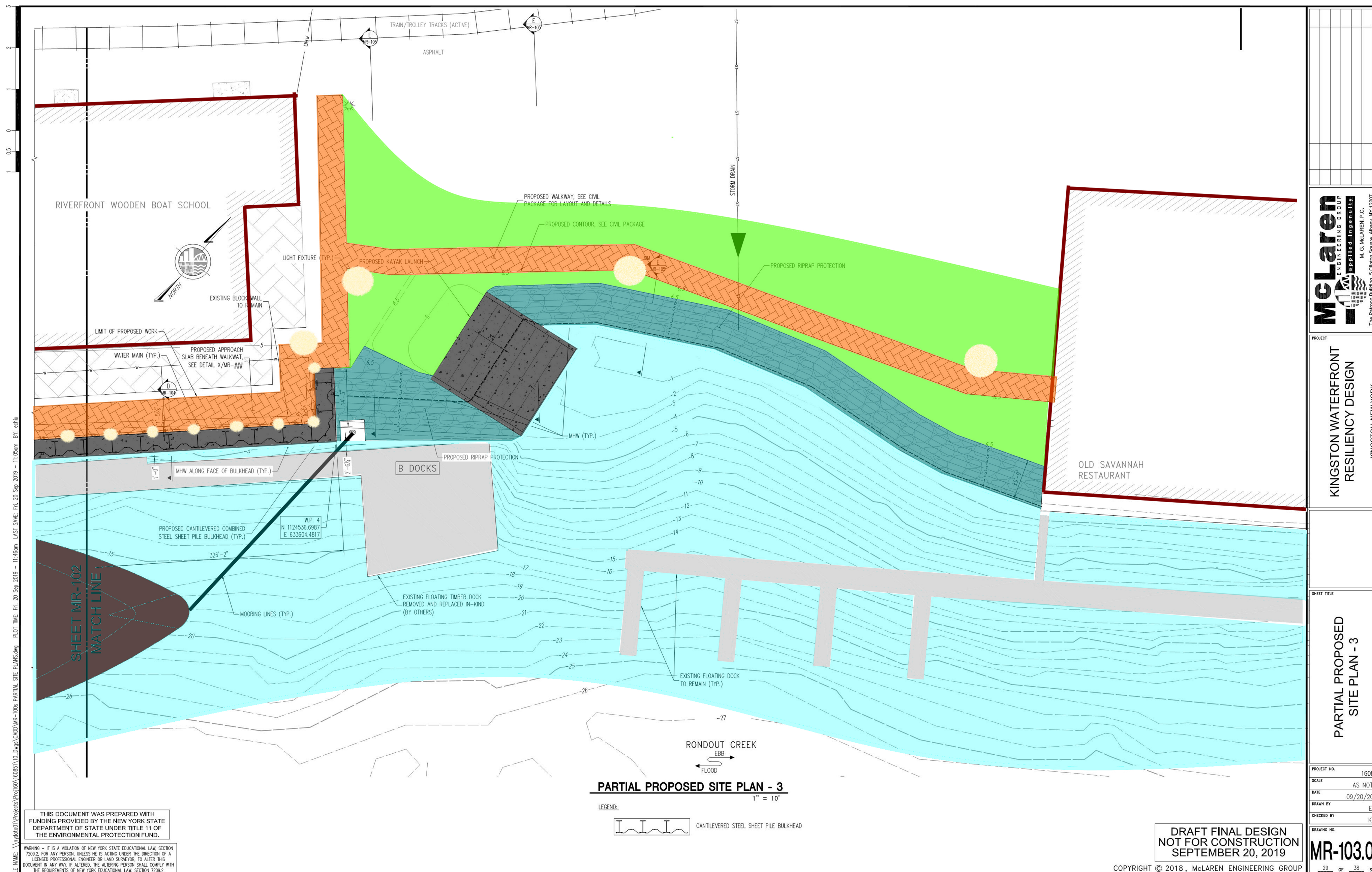
- A. New Wall at A-Dock, replacing existing timber wall
- B. New Wall at A-Dock, replacing temporary repair at Hudson River Maritime Museum
- C. New Wall at B-Dock, replacing existing timber wall at Riverport Boat School
- D. New Wall at B-Dock, replacing existing gravity wall at Riverport Boat School

Funding for these projects has been provided by the New York State Department of State and the New York State Office of Parks, Recreation, and Historic Preservation under Title 11 and 9 of the Environmental Protection Fund, and by the New York State Department of Environmental Conservation, in cooperation with the New England Interstate Water Pollution Commission and Hudson River Estuary Program.



WEAVING THE WATERFRONT KINGSTON

Waterfront Resiliency Design



Historic Ferry Landing

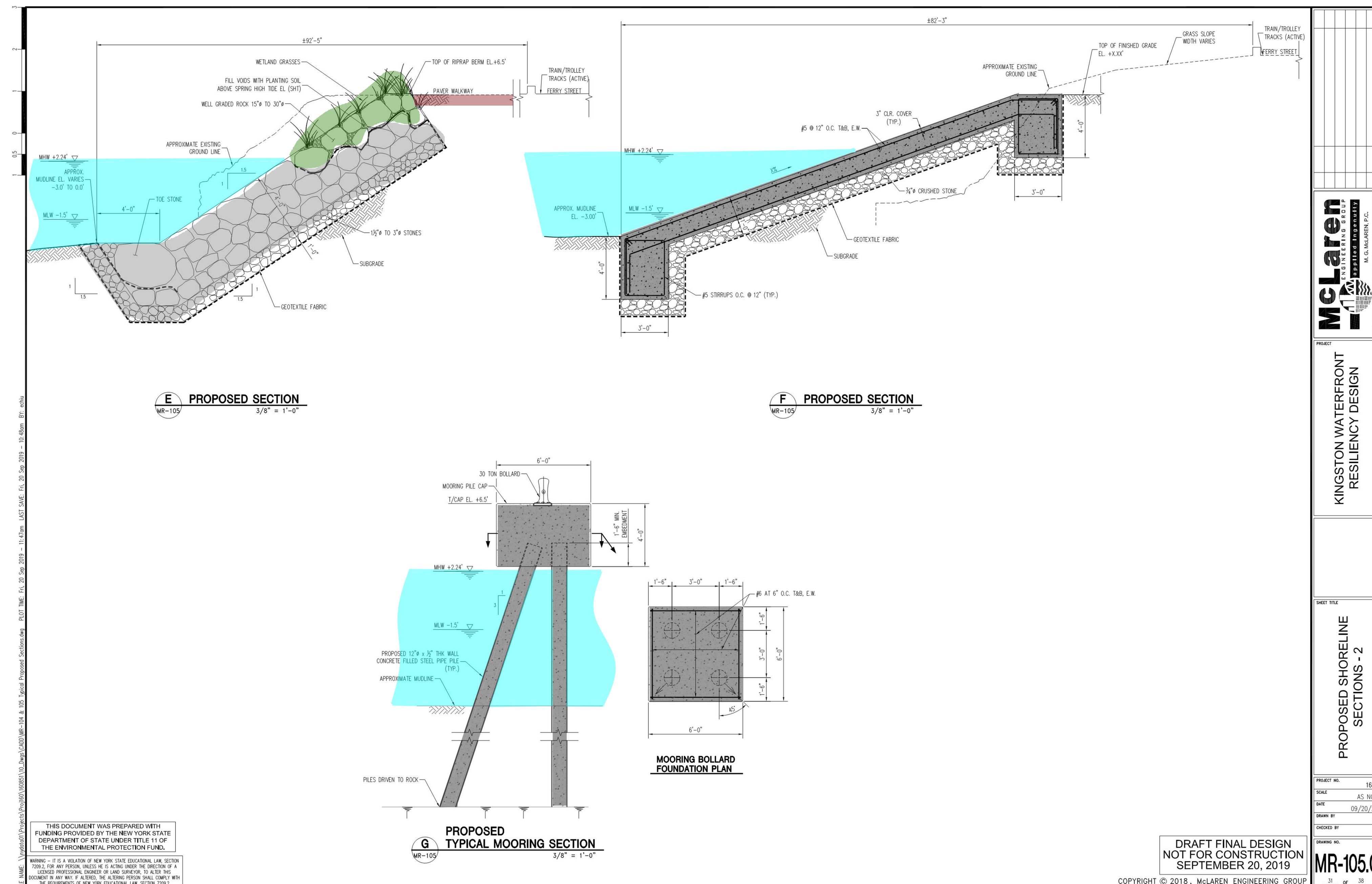
- Existing shoreline to be anchored with riprap
- Shoreland elevation will be raised 18" for increased resiliency, top of berm elev. 6.5'
- Potential to raise an additional 18" (elev. 8.0') for future further resiliency
- Ferry Landing refashioned as a kayak/canoe launch
- 6' min. walkway along the length of raised berm, connect to existing walkway at Ole Savannah
- Pole lighting, style consistent with City of Kingston

Funding for these projects has been provided by the New York State Department of State and the New York State Office of Parks, Recreation, and Historic Preservation under Title 11 and 9 of the Environmental Protection Fund, and by the New York State Department of Environmental Conservation, in cooperation with the New England Interstate Water Pollution Commission and Hudson River Estuary Program.



WEAVING THE WATERFRONT KINGSTON

Waterfront Resiliency Design



Historic Ferry Landing

- Riprap stabilization, vegetated shoreline, and walkway
- Kayak/Canoe launch
- Mooring structure

Funding for these projects has been provided by the New York State Department of State and the New York State Office of Parks, Recreation, and Historic Preservation under Title 11 and 9 of the Environmental Protection Fund, and by the New York State Department of Environmental Conservation, in cooperation with the New England Interstate Water Pollution Commission and Hudson River Estuary Program.

