

PROJECT MANAGER M. KRUK
 CHECK
 DRAFTING
 CHECK
 DESIGN
 JOB MANAGER MARK KRUK
 DESIGN SUPERVISOR C. RYAN

TABLE OF POST-PLANTING CARE WITH REPLACEMENTS			
ITEM	DESCRIPTION	QUANTITY	NOTES
611.19010024	POST-PLANTING CARE WITH REPLACEMENT-MAJOR DECIDUOUS TREES	56 EACH	ALL TREES
611.19020024	POST-PLANTING CARE WITH REPLACEMENT-MINOR DECIDUOUS TREES	16 EACH	ALL TREES
611.19040024	POST-PLANTING CARE WITH REPLACEMENT-DECIDUOUS SHRUBS	157 EACH	ALL SHRUBS
611.19070024	POST-PLANTING CARE WITH REPLACEMENT-HERBACEOUS PLANTS	477 EACH	ALL HERBACIOUS

TABLE OF MOWING LIMITS MARKERS			
ITEM	DESCRIPTION	QUANTITY	NOTES
610.22	MOWING LIMITS MARKERS - TYPE A	20 EACH	SEE LANDSCAPE PLAN PLACED AT 10' INTERVALS

TABLE OF TURF ESTABLISHMENT AND WILDFLOWER SEEDING			
ITEM	DESCRIPTION	QUANTITY	NOTES
610.1601	TURF ESTABLISHMENT - ROADSIDE	2360 SY	SEE TYPICAL SECTIONS AND LANDSCAPE PLAN
610.1602	TURF ESTABLISHMENT - LAWN	1504 SY	SEE TYPICAL SECTIONS AND LANDSCAPE PLAN
610.17	WILDFLOWER SEEDING	772 SY	SEE TYPICAL SECTIONS AND LANDSCAPE PLAN

TABLE OF EROSION CONTROL ITEMS			
ITEM	DESCRIPTION	QUANTITY	NOTES
209.100101	MULCH-TEMPORARY - STRAW	9550 SY	SEE EXPOSED SOIL CRITERIA TABLE
209.1003	SEED AND MULCH - TEMPORARY - STRAW	9550 SY	SEE EXPOSED SOIL CRITERIA TABLE
209.2103	SOIL STABILIZER, CLASS IV, TYPE C	17 SY	SEE EXPOSED SOIL CRITERIA TABLE

TABLE OF TOPSOIL			
ITEM	DESCRIPTION	QUANTITY	NOTES
610.1402	TOPSOIL - ROADSIDE	265 CY	SEE TYPICAL SECTIONS AND LANDSCAPE PLAN
610.1403	TOPSOIL - LAWNS	251 CY	SEE TYPICAL SECTIONS AND LANDSCAPE PLAN
610.1404	TOPSOIL - SPECIAL PLANTING MIX	630 CY	SEE TYPICAL SECTIONS AND LANDSCAPE PLAN

TABLE OF PORTABLE DRIP IRRIGATION AND REMOVAL OF PORTABLE DRIP IRRIGATION			
ITEM	DESCRIPTION	QUANTITY	NOTES
611.17	PORTABLE DRIP IRRIGATION SYSTEM	72 EACH	ALL TREES
611.18	REMOVAL OF PORTABLE DRIP IRRIGATION SYSTEM	72 EACH	ALL PORTABLE DRIP IRRIGATION SYSTEMS

ITEM 610.17 WILDFLOWER (NO MOW) SEED MIX		
COMMON NAME	BOTANICLE NAME	PERCENT
SHADOW III CHEWINGS FESCUE	FESTUCA COMMUTATA	23.56
BLUE MESA SHEEP FESCUE	FESTUCA OVINA	23.56
SWORD HARD FESCUE	F. LONGIFOLIA	11.68
GLADIATOR HARD FESCUE	FESTUCA BREVIPIILA (F. LONGIFOLIA)	11.76
KENT CREEPING RED FESCUE	F. RUBRA, SUBSP. RUBRA	11.76
SEALINK SLENDER CREEPING RED FESCUE	FESTUCA RUBRA	11.68
ANNUAL RYEGRASS	LOLIUM MULTIFLORUM	3.92

NOTE: NO MOW GRASS SEED MIX FROM PRAIRIE NURSERY-NATIVE PLANTS AND SEEDS OR APPROVED EQUAL

TABLE OF WATERING VEGETATION			
ITEM	DESCRIPTION	QUANTITY	NOTES
610.19	WATERING FOR TREES & SHRUBS	80 MGAL	ALL TREES AND SHRUBS - BETWEEN APRIL 1 AND NOV. 15, IN THE ABSENCE OF 1 INCH OF RAINFALL WITHIN 5 CONSECUTIVE DAYS, FILL THE SOIL SAUCER (3" DEPTH) OR THE PORTABLE DRIP IRRIGATION BAG WITH WATER ONCE PER WEEK, EXCEPT DURING JULY AND AUGUST, WHEN WATERING SHALL BE TWICE A WEEK.
610.19	WATERING TURF, WILDFLOWERS, SOD, GROUNDCOVERS, VINES, HERBACEOUS PLANTS	605 MGAL	ALL TURF, WILDFLOWERS, GROUNDCOVERS, VINES - NOTE ANY EXCEPTIONS HERE - BETWEEN APRIL 1 AND NOV. 15 IN THE ABSENCE OF 1" OF RAINFALL WITHIN 5 CONSECUTIVE CALENDAR DAYS WATER ONCE PER WEEK TO A DEPTH OF 1".

TABLE OF MULCH			
ITEM	DESCRIPTION	QUANTITY	NOTES
610.1101	TYPE D - SHREDDED BARK MULCH	95 CY	4" DEPTH

AFFIX SEAL: ON: 07/18/18 ALTERED BY: ON:



AS-BUILT REVISIONS DESCRIPTION OF ALTERATIONS:

SH 58-14 - INTERSTATE ROUTE 587 (THRUWAY ACCESS ROUTE 28 - ALBANY AVE & BROADWAY)
 SH 75-30 - BROADWAY TO ROUTE 32
 COUNTY: ULSTER REGION: 08

PIN 8811.26 ROUTE 32

BRIDGES
 CULVERTS

ALL DIMENSIONS IN FT UNLESS OTHERWISE NOTED
 LANDSCAPE TABLES

CONTRACT NUMBER D263784
 DRAWING NO. LAT-01
 SHEET NO. 129

IT IS A VIOLATION OF LAW FOR ANY PERSON, UNLESS THEY ARE ACTING UNDER THE DIRECTION OF A LICENSED PROFESSIONAL ENGINEER, ARCHITECT, LANDSCAPE ARCHITECT, OR LAND SURVEYOR, TO ALTER AN ITEM IN ANY WAY. IF AN ITEM BEARING THE STAMP OF A LICENSED PROFESSIONAL IS ALTERED, THE ALTERING ENGINEER, ARCHITECT, LANDSCAPE ARCHITECT, OR LAND SURVEYOR SHALL STAMP THE DOCUMENT AND INCLUDE THE NOTATION "ALTERED BY" FOLLOWED BY THEIR SIGNATURE, THE DATE OF SUCH ALTERATION, AND A SPECIFIC DESCRIPTION OF THE ALTERATION.



FILE NAME = 881126.cph_lot_01.dgn
 DATE/TIME = 17-JUL-2018 14:36
 USER = khurley

PLANT SCHEDULE - ITEM 611.XXXXXX							
ITEM	SYMBOL	BOTANICAL/ COMMON NAME	SIZE	BALL / CONT. SIZE	PIT SIZE	QUANTITY	COMMENTS
<u>MAJOR DECIDUOUS TREES – 611.01XX</u>							
611.0171	AS	ACER SACCHARUM/ SUGAR MAPLE	3"	32"	80"	10	STREET TREE PRUNING
611.0171	AR	ACER RUBRUM/ RED MAPLE	3"	32"	80"	3	STREET TREE PRUNING
611.0171	CO	CELTIS OCCIDENTALIS/ COMMON HACKBERRY	3"	32"	80"	16	STREET TREE PRUNING
611.0171	GT	GLEDITSIA TRICANTHOS 'INERMIS'/ HONEY LOCUST	3"	32"	80"	9	STREET TREE PRUNING
611.0171	LT	LIRIODENDRON TULIPIFERA/ TULIP TREE	3"	32"	80"	6	STREET TREE PRUNING
611.0171	KC	GYMNOCLADUS DIOICA/KENTUCKY COFFEETREE	3"	32"	80"	12	STREET TREE PRUNING
<u>MINOR DECIDUOUS TREES - 611.02XX</u>							
611.0291	AA	AMELANCHIER ARBOREA/ SERVICEBERRY	1-3/4"	22"	66"	6	SINGLE STEM
611.0291	CC	CERCIS CANADENSIS/ EASTERN REDBUD	1-3/4"	22"	66"	8	SINGLE STEM
611.0291	CF	CORNUS FLORIDA/ FLOWERING DOGWOOD	1-3/4"	22"	66"	2	SINGLE STEM
<u>DECIDUOUS SHRUBS – 611.04XX</u>							
611.0432	CH	ARONIA ARBUTIFOLIA/ CHOKEBERRY	18"	9"	18"	8	
611.0432	SU	CLETHRA ALNIFOLIA/ SUMMERSWEET	18"	9"	18"	16	
611.0432	RD	CORNUS SERICEA/ RED OSIER DOGWOOD	18"	9"	18"	27	
611.0432	IG	ILEX GLABRA/ INKBERRY	18"	9"	18"	16	
611.0432	IT	ITEA VIRGINICA/ SWEET SPIRE	18"	9"	18"	36	
611.0432	SL	SPIREA LATIFOLIA/ MEADOWSWEET	18"	9"	18"	34	
611.0432	SA	SYMPHORICARPOS ALBUS/ SNOWBERRY	18"	9"	18"	20	
<u>HERBACEOUS PLANTS – 611.07XX</u>							
611.0741	HYSSOP	AGASTACHE FOENICULUM/ ANISE HYSSOP	1 GAL			16	
611.0741	BLUESTAR	AMSONIA TABERNAEMONTANA/ EASTERN BLUESTAR	1 GAL			16	
611.0741	ANEMONE	ANEMONE CANADENSIS/ ANEMONE	1 GAL			33	
611.0741	BUTTERFLY	ASCLEPIAS TUBEROSA/ BUTTERFLY WEED	1 GAL			17	
611.0741	INDIGO	BAPTISIA AUSTRALIS/ BLUE FALSE INDIGO	1 GAL			16	
611.0741	NJ TEA	CEANOTHUS AMERICANUS/ NEW JERSEY TEA	1 GAL			23	
611.0741	COREOPSIS	COREOPSIS VERTICILLATA/ COREOPSIS	1 GAL			23	
611.0741	HAIRGRASS	DESCHAMPسيا CESPITOSA/ TUFTED HAIRGRASS	1 GAL			47	
611.0741	CONEFLOWER	ECHINACEA PURPUREA/ PURPLE CONEFLOWER	1 GAL			18	
611.0741	BONESET	EUPATORIUM PERFOLIATUM/ BONESET	1 GAL			16	
611.0741	SWEETGRASS	HIEROCHLOE ORDORATA/ VANILLA SWEETGRASS	1 GAL			40	
611.0741	BLAZINGSTAR	LIATRIS SPICATA/ PRAIRIE BLAZINGSTAR	1 GAL			17	
611.0741	SWITCHGRASS	PANICUM VIRGATUM/ SWITCHGRASS	1 GAL			45	
611.0741	DRAGONHEAD	PHYSOSTEGIA VIRGINIANA/ FALSE DRAGONHEAD	1 GAL			22	
611.0741	SUSAN	RUDBECKIA FULGIDA/ BLACK-EYED SUSAN	1 GAL			18	
611.0741	BLUESTEM	SCHIZACHYRIUM SCOPARIUM/ LITTLE BLUESTEM	1 GAL			93	
611.0741	IRONWEED	VERONIA NOVEBORACENSIS, NEW YORK IRONWEED	1 GAL			17	

AFFIX SEAL: 07/18/18
 ON: ALTERED BY: ON:

AS-BUILT REVISIONS DESCRIPTION OF ALTERATIONS:	SH 58-14 - INTERSTATE ROUTE 587 (THRUWAY ACCESS ROUTE 28 - ALBANY AVE & BROADWAY)	PIN 8811.26 ROUTE 32	BRIDGES	CULVERTS	ALL DIMENSIONS IN FT UNLESS OTHERWISE NOTED	CONTRACT NUMBER D263784
	SH 75-30 - BROADWAY TO ROUTE 32					DRAWING NO. LAT-02 SHEET NO. 130
IT IS A VIOLATION OF LAW FOR ANY PERSON, UNLESS THEY ARE ACTING UNDER THE DIRECTION OF A LICENSED PROFESSIONAL ENGINEER, ARCHITECT, LANDSCAPE ARCHITECT, OR LAND SURVEYOR, TO ALTER AN ITEM IN ANY WAY. IF AN ITEM BEARING THE STAMP OF A LICENSED PROFESSIONAL IS ALTERED, THE ALTERING ENGINEER, ARCHITECT, LANDSCAPE ARCHITECT, OR LAND SURVEYOR SHALL STAMP THE DOCUMENT AND INCLUDE THE NOTATION "ALTERED BY" FOLLOWED BY THEIR SIGNATURE, THE DATE OF SUCH ALTERATION, AND A SPECIFIC DESCRIPTION OF THE ALTERATION.						Department of Transportation

FILE NAME = 881126.cph_lot_02.dgn
 DATE/TIME = 17-JUL-2018 14:37
 USER = khurley

PROJECT MANAGER M. KRUK
 CHECK
 DRAFTING
 CHECK
 DESIGN
 JOB MANAGER MARK KRUK
 DESIGN SUPERVISOR C. RYAN

PROJECT MANAGER M. KRUK

CHECK

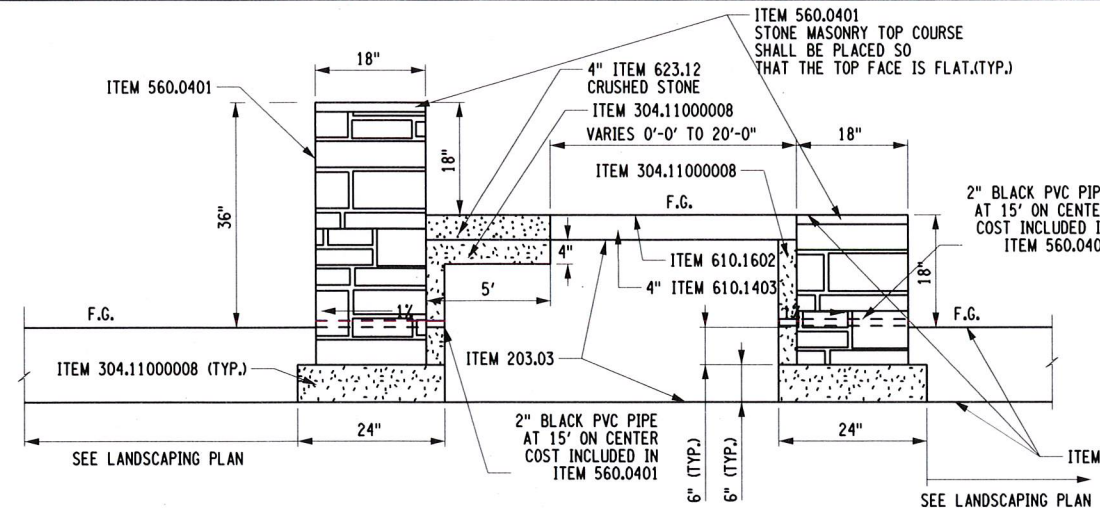
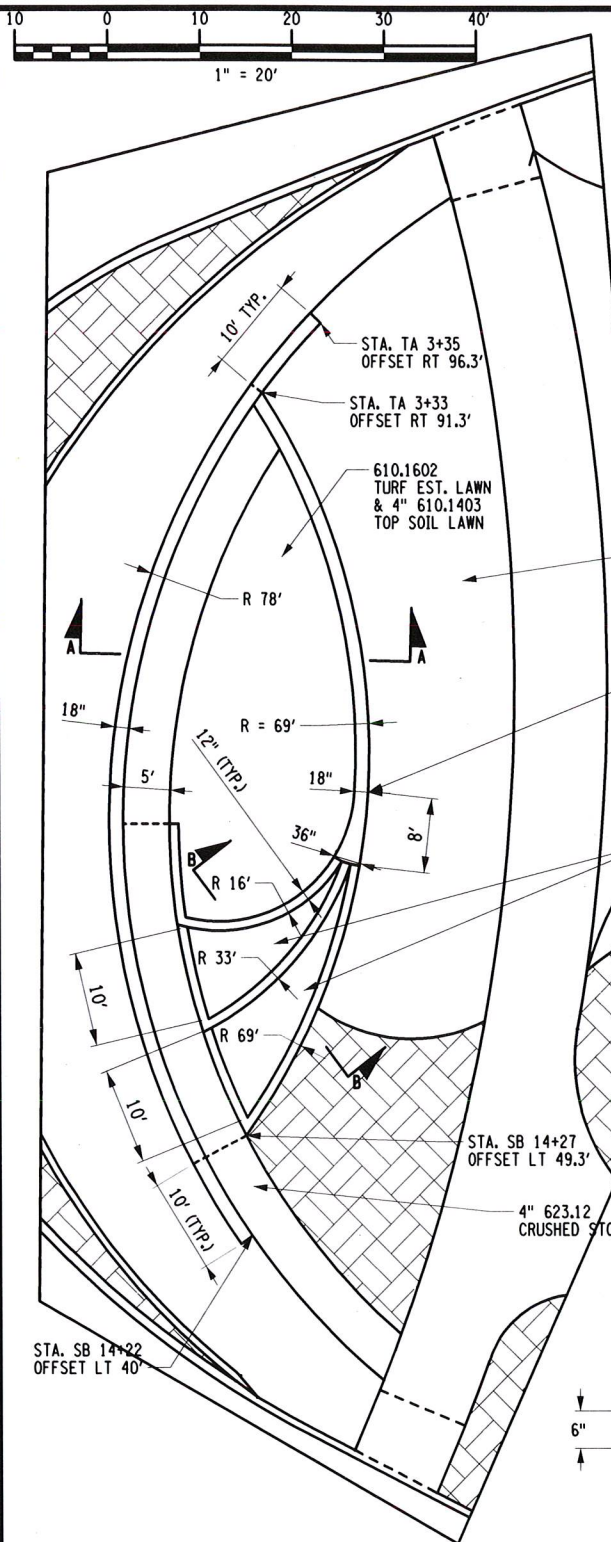
DRAFTING

CHECK

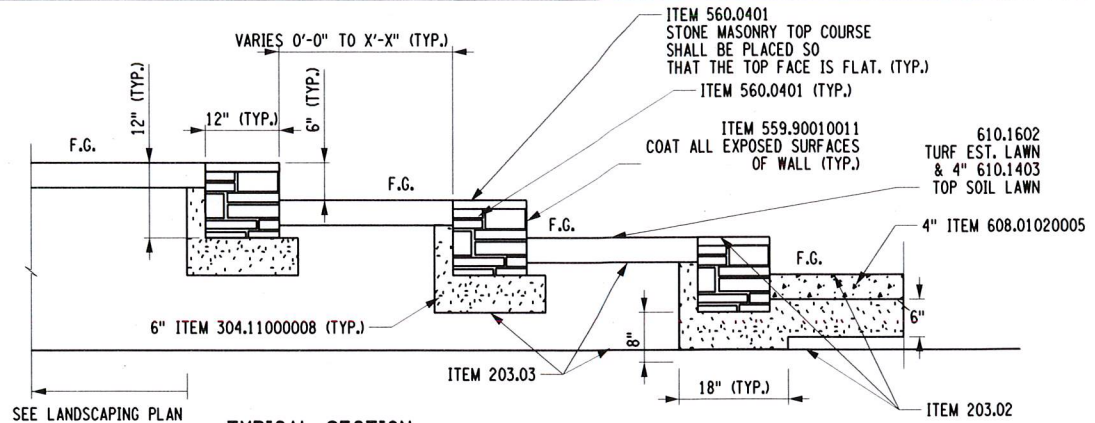
DESIGN

JOB MANAGER MARK KRUK

DESIGN SUPERVISOR C. RYAN



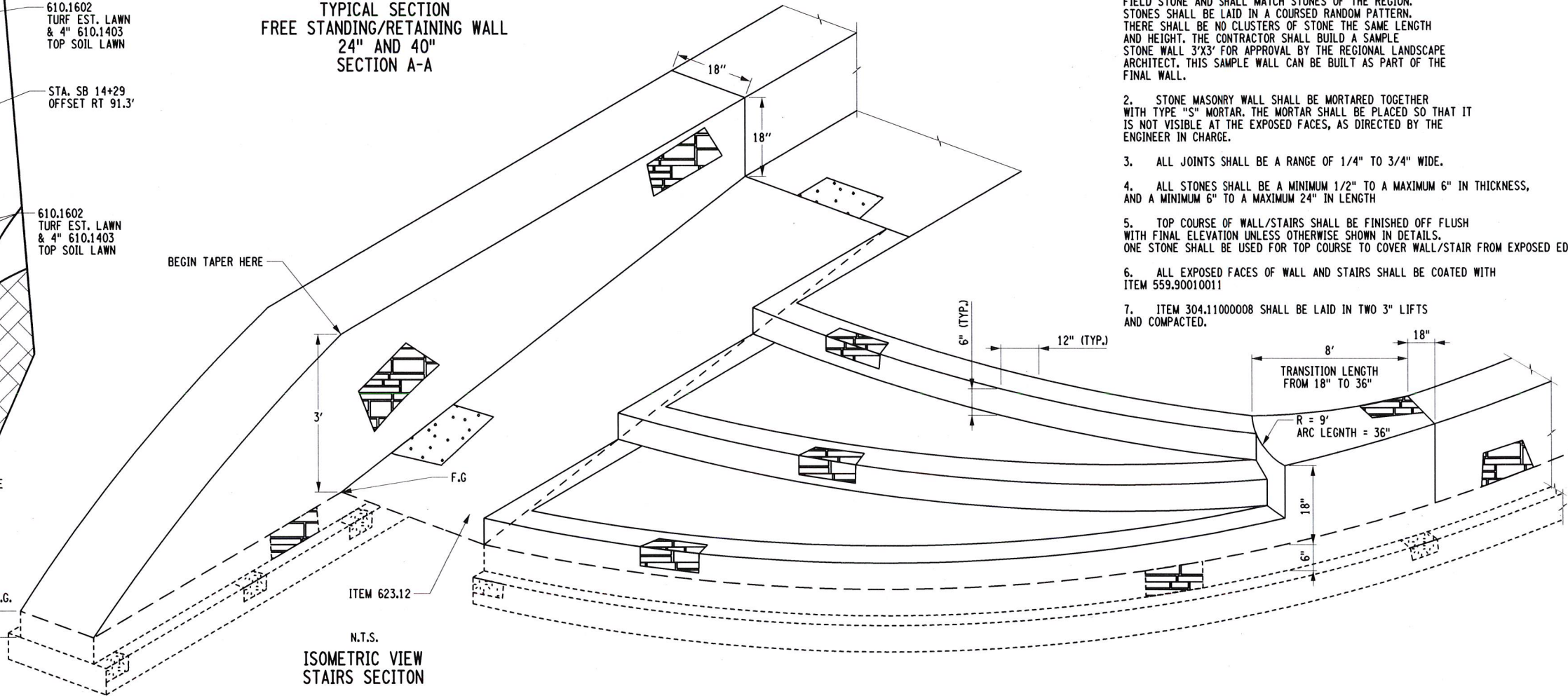
TYPICAL SECTION
FREE STANDING/RETAINING WALL
24\"/>



TYPICAL SECTION
STEPS
12\"/>

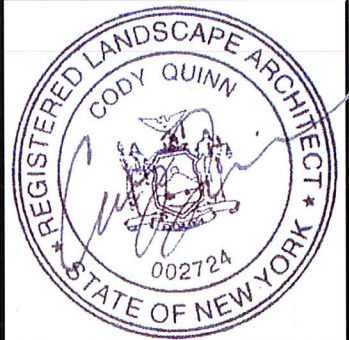
NOTES:

1. STONE MASONRY WALLS SHALL BE NATURAL FIELD STONE AND SHALL MATCH STONES OF THE REGION. STONES SHALL BE LAID IN A COURSED RANDOM PATTERN. THERE SHALL BE NO CLUSTERS OF STONE THE SAME LENGTH AND HEIGHT. THE CONTRACTOR SHALL BUILD A SAMPLE STONE WALL 3'X3' FOR APPROVAL BY THE REGIONAL LANDSCAPE ARCHITECT. THIS SAMPLE WALL CAN BE BUILT AS PART OF THE FINAL WALL.
2. STONE MASONRY WALL SHALL BE MORTARED TOGETHER WITH TYPE "S" MORTAR. THE MORTAR SHALL BE PLACED SO THAT IT IS NOT VISIBLE AT THE EXPOSED FACES, AS DIRECTED BY THE ENGINEER IN CHARGE.
3. ALL JOINTS SHALL BE A RANGE OF 1/4" TO 3/4" WIDE.
4. ALL STONES SHALL BE A MINIMUM 1/2" TO A MAXIMUM 6" IN THICKNESS, AND A MINIMUM 6" TO A MAXIMUM 24" IN LENGTH
5. TOP COURSE OF WALL/STAIRS SHALL BE FINISHED OFF FLUSH WITH FINAL ELEVATION UNLESS OTHERWISE SHOWN IN DETAILS. ONE STONE SHALL BE USED FOR TOP COURSE TO COVER WALL/STAIR FROM EXPOSED EDGE.
6. ALL EXPOSED FACES OF WALL AND STAIRS SHALL BE COATED WITH ITEM 559.90010011
7. ITEM 304.11000008 SHALL BE LAID IN TWO 3" LIFTS AND COMPACTED.



N.T.S.
ISOMETRIC VIEW
STAIRS SECTION

AFFIX SEAL: ON: 07/18/18
ALTERED BY: ON:



AS-BUILT REVISIONS DESCRIPTION OF ALTERATIONS:	SH 58-14 - INTERSTATE ROUTE 587 (THRUWAY ACCESS ROUTE 28 - ALBANY AVE & BROADWAY)	PIN 8811.26 ROUTE 32	BRIDGES	CULVERTS	ALL DIMENSIONS IN FT UNLESS OTHERWISE NOTED	CONTRACT NUMBER D263784
	SH 75-30 - BROADWAY TO ROUTE 32				LANDSCAPE DETAILS	DRAWING NO. LAD-01 SHEET NO. 131
	COUNTY: ULSTER	REGION: 08				

IT IS A VIOLATION OF LAW FOR ANY PERSON, UNLESS THEY ARE ACTING UNDER THE DIRECTION OF A LICENSED PROFESSIONAL ENGINEER, ARCHITECT, LANDSCAPE ARCHITECT, OR LAND SURVEYOR, TO ALTER AN ITEM IN ANY WAY. IF AN ITEM BEARING THE STAMP OF A LICENSED PROFESSIONAL IS ALTERED, THE ALTERING ENGINEER, ARCHITECT, LANDSCAPE ARCHITECT, OR LAND SURVEYOR SHALL STAMP THE DOCUMENT AND INCLUDE THE NOTATION "ALTERED BY" FOLLOWED BY THEIR SIGNATURE, THE DATE OF SUCH ALTERATION, AND A SPECIFIC DESCRIPTION OF THE ALTERATION.



FILE NAME = 881126_cph_lad_01.dgn
DATE/TIME = 17-JUL-2018 14:37
USER = kburley

PROJECT MANAGER M. KRUIK

CHECK

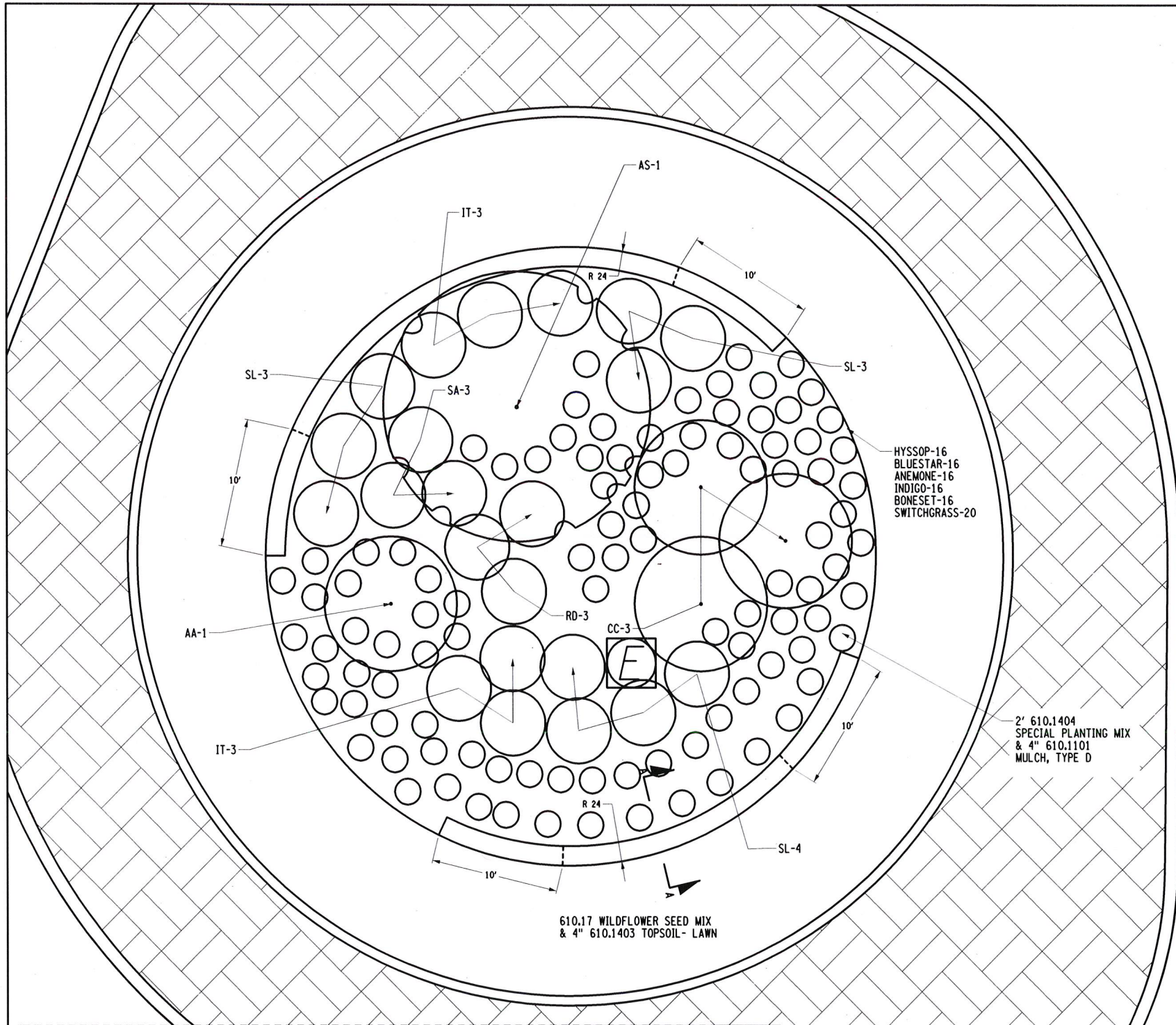
DRAFTING

CHECK

DESIGN

JOB MANAGER MARK KRUIK

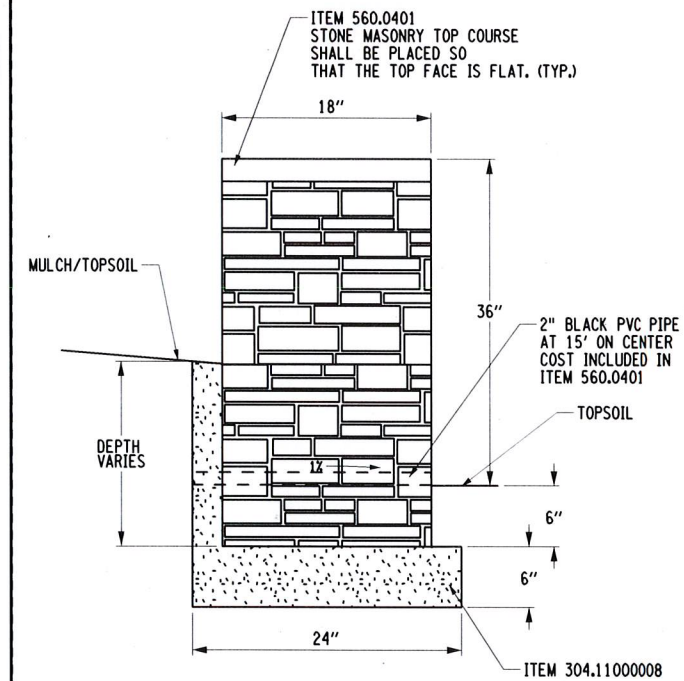
DESIGN SUPERVISOR C. RYAN



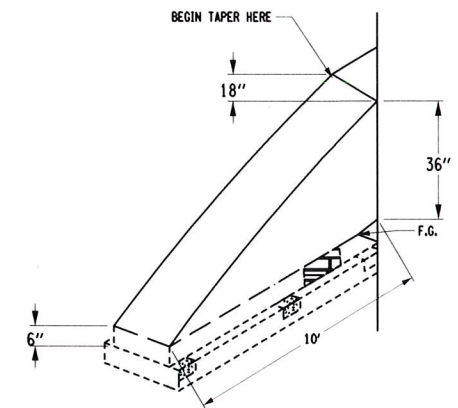
ROUNDABOUT PLAN BLOWUP

NOTES:

1. STONE MASONRY WALLS SHALL BE NATURAL FIELD STONE AND SHALL MATCH STONES OF THE REGION. STONES SHALL BE LAID IN A COURSED RANDOM PATTERN. THERE SHALL BE NO CLUSTERS OF STONE THE SAME LENGTH AND HEIGHT. THE CONTRACTOR SHALL BUILD A SAMPLE STONE WALL 3'X3' FOR APPROVAL BY THE REGIONAL LANDSCAPE ARCHITECT. THIS SAMPLE WALL CAN BE BUILT AS PART OF THE FINAL WALL.
2. STONE MASONRY WALL SHALL BE MORTARED TOGETHER WITH TYPE "S" MORTAR. THE MORTAR SHALL BE PLACED SO THAT IT IS NOT VISIBLE AT THE EXPOSED FACES, AS DIRECTED BY THE ENGINEER IN CHARGE.
3. ALL JOINTS SHALL BE A RANGE OF 1/4" TO 3/4" WIDE.
4. ALL STONES SHALL BE A MINIMUM 1/2" TO A MAXIMUM 6" IN THICKNESS, AND A MINIMUM 6" TO A MAXIMUM 24" IN LENGTH.
5. ONE STONE SHALL BE USED FOR TOP COURSE TO COVER WALL FROM EXPOSED EDGE.
6. ALL EXPOSED FACES OF WALL SHALL BE COATED WITH ITEM 559.90010011
7. ITEM 304.11000008 SHALL BE LAID IN TWO 3" LIFTS AND COMPACTED.
8. ALL PROPOSED PLANTS SHALL BE STAKED OUT BY REGIONAL LANDSCAPE ARCHITECT.

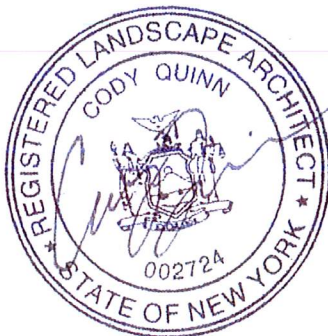


TYPICAL SECTION ROUNDABOUT WALLS SECTION A-A



TYPICAL TAPER DETAIL FOR WALL TERMINUS N.T.S.

AFFIX SEAL: ON: 07/18/18
 ALTERED BY: ON:



AS-BUILT REVISIONS DESCRIPTION OF ALTERATIONS:	SH 58-14 - INTERSTATE ROUTE 587 (THRUWAY ACCESS ROUTE 28 - ALBANY AVE & BROADWAY)	PIN 8811.26 ROUTE 32	BRIDGES	CULVERTS	ALL DIMENSIONS IN FT UNLESS OTHERWISE NOTED	CONTRACT NUMBER D263784
	SH 75-30 - BROADWAY TO ROUTE 32				LANDSCAPE DETAILS	DRAWING NO. LAD-02 SHEET NO. 132
	COUNTY: ULSTER	REGION: 08				

IT IS A VIOLATION OF LAW FOR ANY PERSON, UNLESS THEY ARE ACTING UNDER THE DIRECTION OF A LICENSED PROFESSIONAL ENGINEER, ARCHITECT, LANDSCAPE ARCHITECT, OR LAND SURVEYOR, TO ALTER AN ITEM IN ANY WAY. IF AN ITEM BEARING THE STAMP OF A LICENSED PROFESSIONAL IS ALTERED, THE ALTERING ENGINEER, ARCHITECT, LANDSCAPE ARCHITECT, OR LAND SURVEYOR SHALL STAMP THE DOCUMENT AND INCLUDE THE NOTATION "ALTERED BY" FOLLOWED BY THEIR SIGNATURE, THE DATE OF SUCH ALTERATION, AND A SPECIFIC DESCRIPTION OF THE ALTERATION.



FILE NAME = 881126_cph_lad_02.dgn
 DATE/TIME = 17-JUL-2018 14:37
 USER = khurley

PROJECT MANAGER M. KRUK

CHECK

DRAFTING

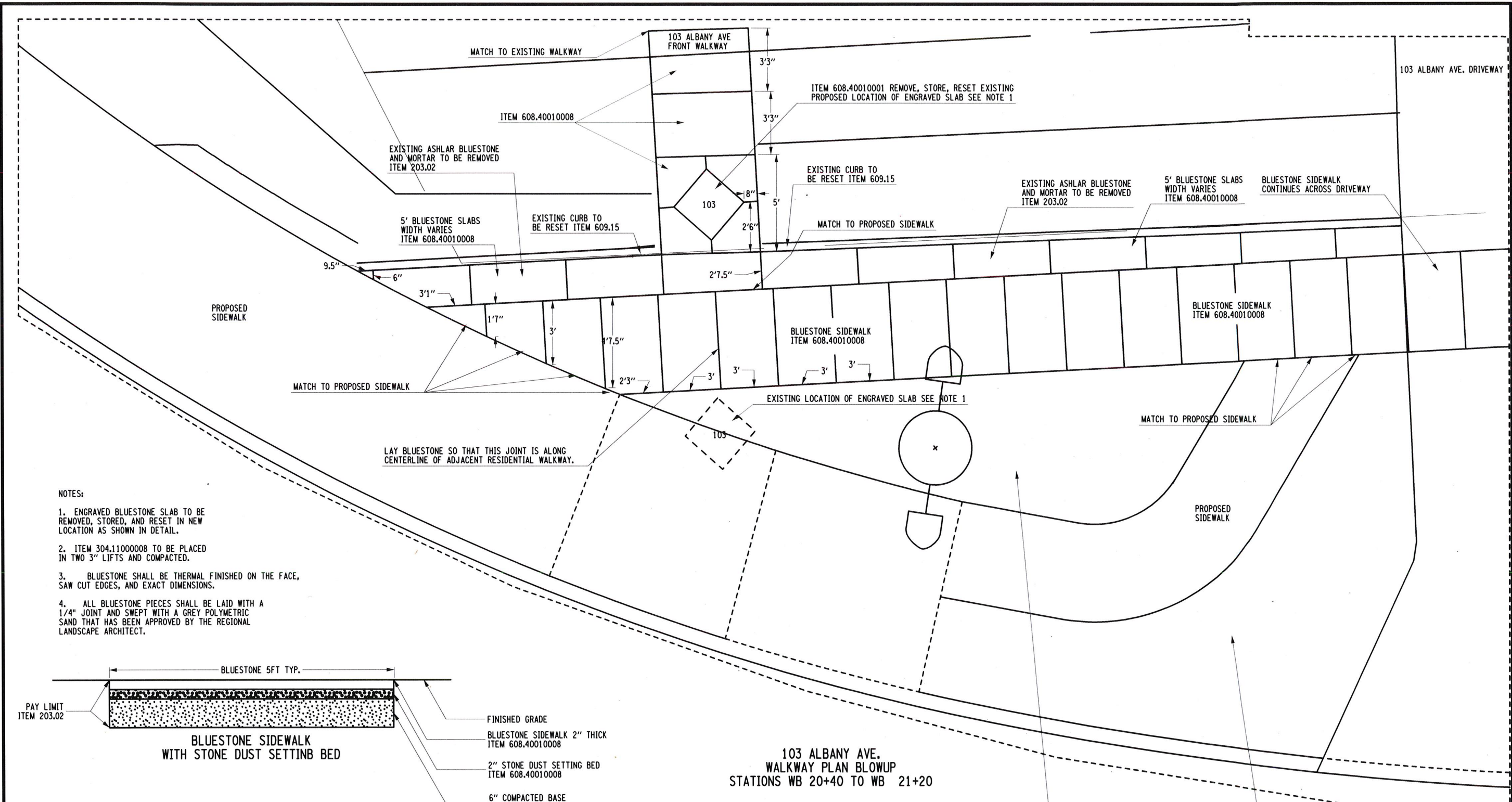
CHECK

DESIGN

JOB MANAGER MARK KRUK

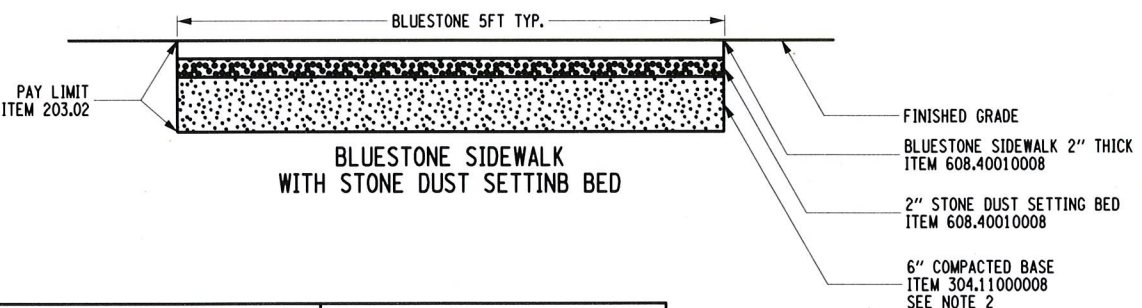
DESIGN SUPERVISOR C. RYAN

FILE NAME = 881126_cph_lad_03.dgn
DATE/TIME = 17-JUL-2018 14:37
USER = khurley



NOTES:

1. ENGRAVED BLUESTONE SLAB TO BE REMOVED, STORED, AND RESET IN NEW LOCATION AS SHOWN IN DETAIL.
2. ITEM 304.1100008 TO BE PLACED IN TWO 3" LIFTS AND COMPACTED.
3. BLUESTONE SHALL BE THERMAL FINISHED ON THE FACE, SAW CUT EDGES, AND EXACT DIMENSIONS.
4. ALL BLUESTONE PIECES SHALL BE LAID WITH A 1/4" JOINT AND SWEEPED WITH A GREY POLYMERIC SAND THAT HAS BEEN APPROVED BY THE REGIONAL LANDSCAPE ARCHITECT.



103 ALBANY AVE. WALKWAY PLAN BLOWUP STATIONS WB 20+40 TO WB 21+20

AFFIX SEAL: 07/18/18
ON:

ALTERED BY: ON:

AS-BUILT REVISIONS DESCRIPTION OF ALTERATIONS:	SH 58-14 - INTERSTATE ROUTE 587 (THRUWAY ACCESS ROUTE 28 - ALBANY AVE & BROADWAY)	PIN 8811.26 ROUTE 32	BRIDGES	CULVERTS	ALL DIMENSIONS IN FT UNLESS OTHERWISE NOTED LANDSCAPE DETAILS	CONTRACT NUMBER D263784
	SH 75-30 - BROADWAY TO ROUTE 32					DRAWING NO. LAD-03 SHEET NO. 133
	COUNTY: ULSTER	REGION: 08				

IT IS A VIOLATION OF LAW FOR ANY PERSON, UNLESS THEY ARE ACTING UNDER THE DIRECTION OF A LICENSED PROFESSIONAL ENGINEER, ARCHITECT, LANDSCAPE ARCHITECT, OR LAND SURVEYOR, TO ALTER AN ITEM IN ANY WAY. IF AN ITEM BEARING THE STAMP OF A LICENSED PROFESSIONAL IS ALTERED, THE ALTERING ENGINEER, ARCHITECT, LANDSCAPE ARCHITECT, OR LAND SURVEYOR SHALL STAMP THE DOCUMENT AND INCLUDE THE NOTATION "ALTERED BY" FOLLOWED BY THEIR SIGNATURE, THE DATE OF SUCH ALTERATION, AND A SPECIFIC DESCRIPTION OF THE ALTERATION.



PROJECT MANAGER M. KRUIK

CHECK

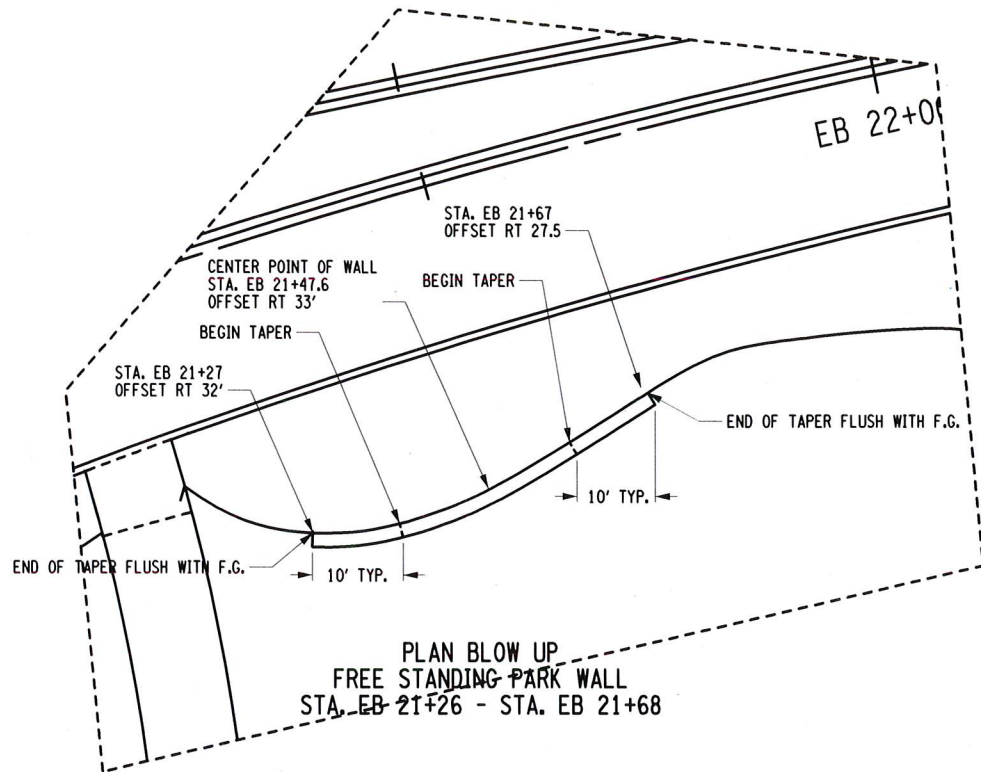
DRAFTING

CHECK

DESIGN

JOB MANAGER MARK KRUIK

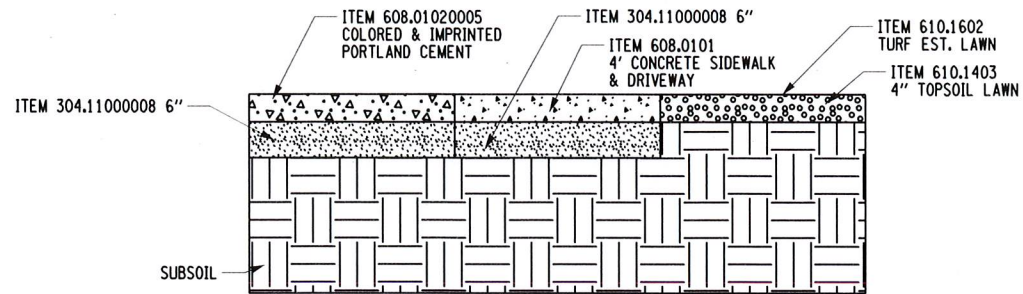
DESIGN SUPERVISOR C. RYAN



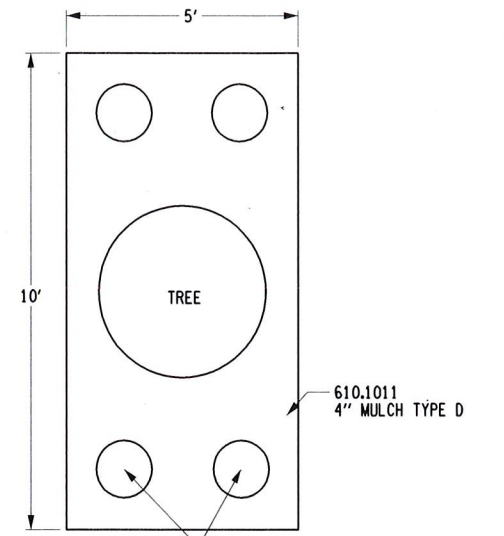
PLAN BLOW UP
FREE STANDING PARK WALL
STA. EB 21+26 - STA. EB 21+68

NOTES:

1. STONE MASONRY WALLS SHALL BE NATURAL FIELD STONE AND SHALL MATCH STONES OF THE REGION. STONES SHALL BE LAID IN A COURSED RANDOM PATTERN. THERE SHALL BE NO CLUSTERS OF STONE THE SAME LENGTH AND HEIGHT. THE CONTRACTOR SHALL BUILD A SAMPLE STONE WALL 3'X3' FOR APPROVAL BY THE REGIONAL LANDSCAPE ARCHITECT. THIS SAMPLE WALL CAN BE BUILT AS PART OF THE FINAL WALL.
2. STONE MASONRY WALL SHALL BE MORTARED TOGETHER WITH TYPE "S" MORTAR. THE MORTAR SHALL BE PLACED SO THAT IT IS NOT VISIBLE AT THE EXPOSED FACES, AS DIRECTED BY THE ENGINEER IN CHARGE.
3. ALL JOINTS SHALL BE A RANGE OF 1/4" TO 3/4" WIDE.
4. TOP COURSE OF WALL SHALL BE FINISHED OFF FLUSH WITH FINAL ELEVATION UNLESS OTHERWISE SHOWN IN DETAILS. ONE STONE SHALL BE USED FOR TOP COURSE TO COVER WALL FROM EXPOSED EDGE.
5. ALL EXPOSED FACES OF WALL SHALL BE COATED WITH ITEM 559.90010011
6. ITEM 304.11000008 SHALL BE LAID IN TWO 3" LIFTS AND COMPACTED.



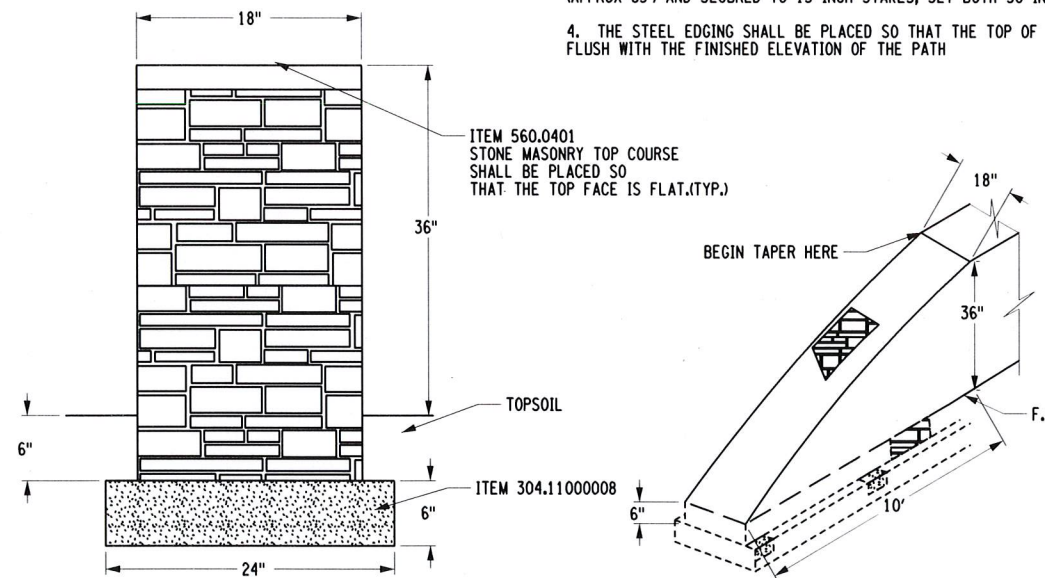
STAMPED CONCRETE
AT TURF AND SIDEWALK



TREE PIT PLAN VIEW TYPICAL

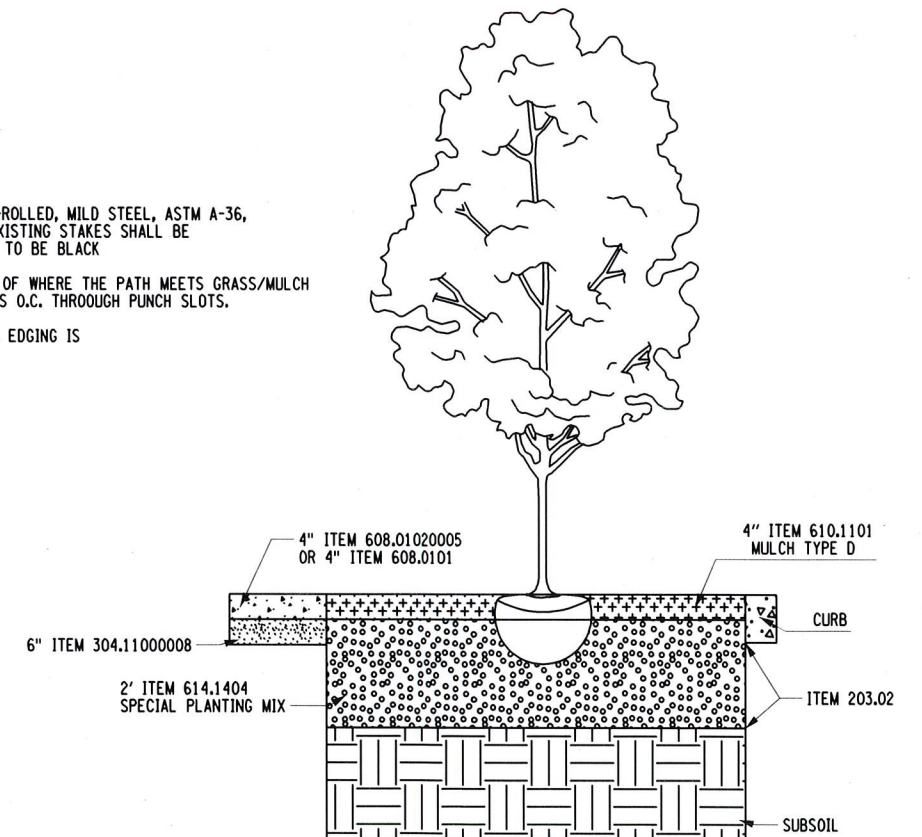
NOTES:

1. STEEL EDGING SHALL BE PAID FOR UNDER ITEM 623.12
2. STEEL EDGING SHALL BE 1/8 INCH THICK BY 4 INCH DEEP, HOT-ROLLED, MILD STEEL, ASTM A-36, SECURED TO 15 INCH LONG TAPERED STEEL STAKES. EDGING AND EXISTING STAKES SHALL BE SHOP PAINTED WITH A WEATHER RESISTANT PAINT. COLOR OF PAINT TO BE BLACK
3. THE STEEL EDGING SHALL BE PLACED ALONG THE ENTIRE WIDTH OF WHERE THE PATH MEETS GRASS/MULCH (APPROX 65') AND SECURED TO 15 INCH STAKES, SET BOTH 30 INCHES O.C. THROUGH PUNCH SLOTS.
4. THE STEEL EDGING SHALL BE PLACED SO THAT THE TOP OF THE EDGING IS FLUSH WITH THE FINISHED ELEVATION OF THE PATH



TYPICAL SECTION FREE STANDING
PARKWALL STA. EB 21+26-STA. EB 21+68
AND ROUNDABOUT WALLS

TYPICAL TAPER DETAIL
FOR WALL TERMINUS N.T.S.



TREE PIT DETAIL TYPICAL N.T.S.
STA. SB 16+25 55' LT
STA. EB 13+95 194' RT
STA. EJ 10+70 1' LT

AFFIX SEAL: ON: 07/18/18
ALTERED BY: ON:



AS-BUILT REVISIONS DESCRIPTION OF ALTERATIONS:	SH 58-14 - INTERSTATE ROUTE 587 (THRUWAY ACCESS ROUTE 28 - ALBANY AVE & BROADWAY)	PIN 8811.26 ROUTE 32	BRIDGES	CULVERTS	ALL DIMENSIONS IN FT UNLESS OTHERWISE NOTED	CONTRACT NUMBER D263784
	SH 75-30 - BROADWAY TO ROUTE 32				LANDSCAPE DETAILS	DRAWING NO. LAD-04 SHEET NO. 134
	COUNTY: ULSTER	REGION: 08				

IT IS A VIOLATION OF LAW FOR ANY PERSON, UNLESS THEY ARE ACTING UNDER THE DIRECTION OF A LICENSED PROFESSIONAL ENGINEER, ARCHITECT, LANDSCAPE ARCHITECT, OR LAND SURVEYOR, TO ALTER AN ITEM IN ANY WAY. IF AN ITEM BEARING THE STAMP OF A LICENSED PROFESSIONAL IS ALTERED, THE ALTERING ENGINEER, ARCHITECT, LANDSCAPE ARCHITECT, OR LAND SURVEYOR SHALL STAMP THE DOCUMENT AND INCLUDE THE NOTATION "ALTERED BY" FOLLOWED BY THEIR SIGNATURE, THE DATE OF SUCH ALTERATION, AND A SPECIFIC DESCRIPTION OF THE ALTERATION.

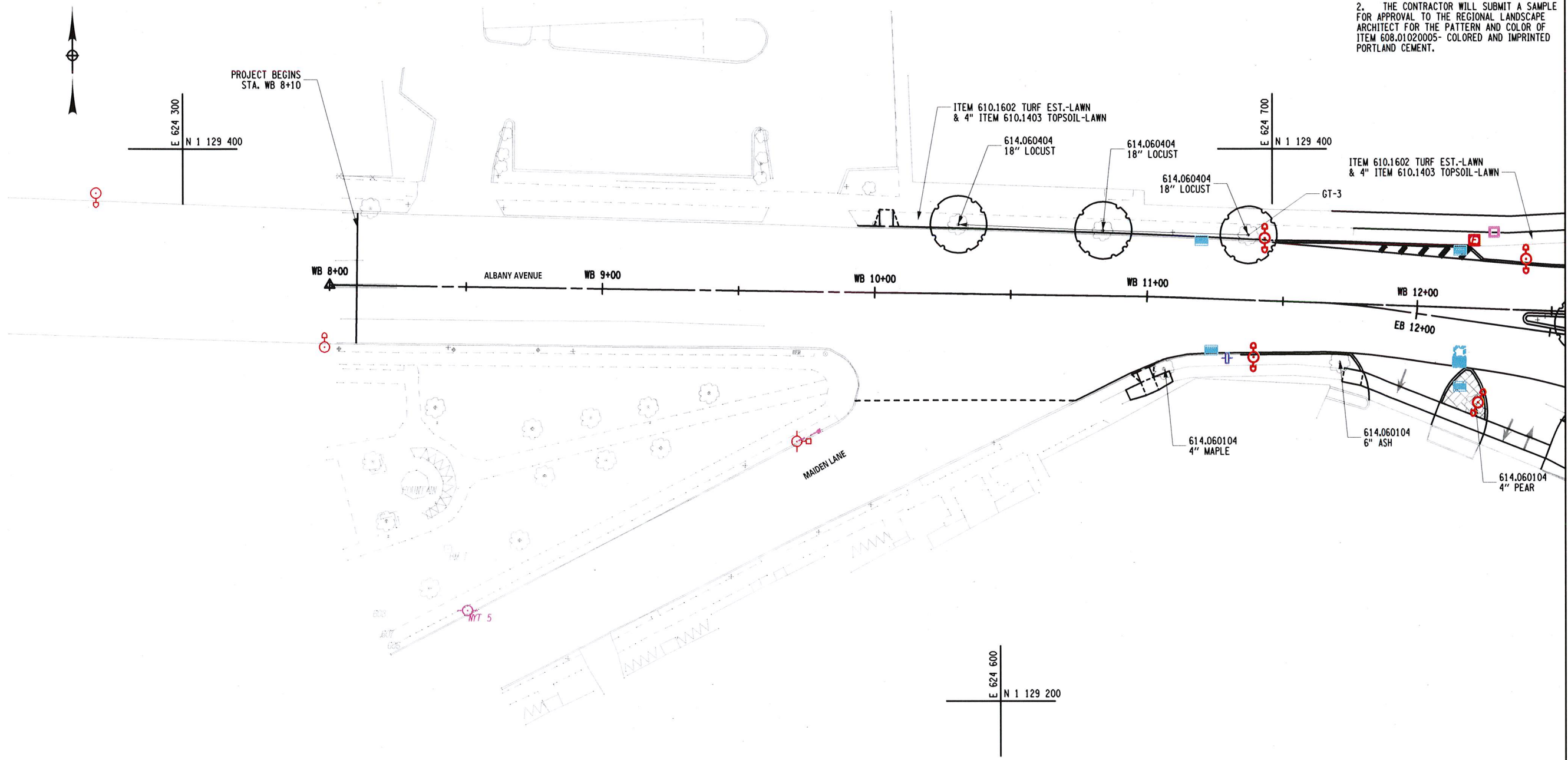


FILE NAME = 881126_cph_lad_04.dgn
DATE/TIME = 17-JUL-2018 14:37
USER = khurley

FILE NAME = 881126_cph_lan_01.dgn
 DATE/TIME = 17-JUL-2018 14:37
 USER = khurley

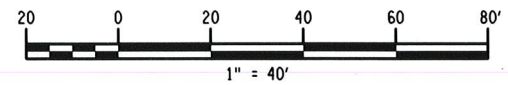
PROJECT MANAGER M. KRUK
 CHECK
 DRAFTING
 CHECK
 DESIGN
 JOB MANAGER MARK KRUK
 DESIGN SUPERVISOR C. RYAN

NOTE:
 1. ALL PROPOSED PLANTS SHALL BE STAKED OUT BY REGIONAL LANDSCAPE ARCHITECT
 2. THE CONTRACTOR WILL SUBMIT A SAMPLE FOR APPROVAL TO THE REGIONAL LANDSCAPE ARCHITECT FOR THE PATTERN AND COLOR OF ITEM 608.01020005- COLORED AND IMPRINTED PORTLAND CEMENT.



MATCH TO DWG. NO. LAP-02

AFFIX SEAL: ON: 07/18/18	ALTERED BY: ON:



AS-BUILT REVISIONS DESCRIPTION OF ALTERATIONS:	SH 58-14 - INTERSTATE ROUTE 587 (THRUWAY ACCESS ROUTE 28 - ALBANY AVE & BROADWAY)	PIN 8811.26 ROUTE 32 UTILITY QUALITY LEVEL C	BRIDGES	CULVERTS	ALL DIMENSIONS IN FT UNLESS OTHERWISE NOTED	CONTRACT NUMBER D263784
	SH 75-30 - BROADWAY TO ROUTE 32					DRAWING NO. LAP-01 SHEET NO. 135
IT IS A VIOLATION OF LAW FOR ANY PERSON, UNLESS THEY ARE ACTING UNDER THE DIRECTION OF A LICENSED PROFESSIONAL ENGINEER, ARCHITECT, LANDSCAPE ARCHITECT, OR LAND SURVEYOR, TO ALTER AN ITEM IN ANY WAY. IF AN ITEM BEARING THE STAMP OF A LICENSED PROFESSIONAL IS ALTERED, THE ALTERING ENGINEER, ARCHITECT, LANDSCAPE ARCHITECT, OR LAND SURVEYOR SHALL STAMP THE DOCUMENT AND INCLUDE THE NOTATION "ALTERED BY" FOLLOWED BY THEIR SIGNATURE, THE DATE OF SUCH ALTERATION, AND A SPECIFIC DESCRIPTION OF THE ALTERATION.						Department of Transportation

PROJECT MANAGER M. KRUK

CHECK

DRAFTING

CHECK

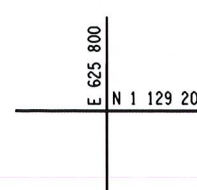
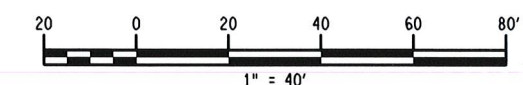
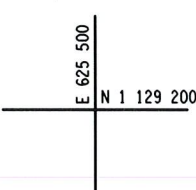
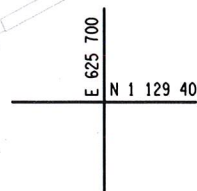
DESIGN

JOB MANAGER MARK KRUK

DESIGN SUPERVISOR C. RYAN

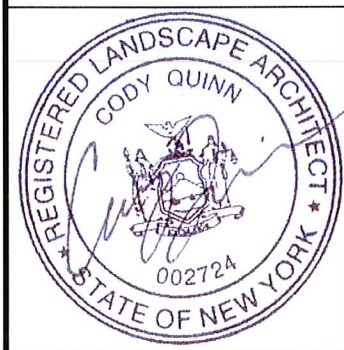


PROJECT ENDS STA. WB 26+00



NOTE:
 1. ALL PROPOSED PLANTS SHALL BE STAKED OUT BY REGIONAL LANDSCAPE ARCHITECT
 2. THE CONTRACTOR WILL SUBMIT A SAMPLE FOR APPROVAL TO THE REGIONAL LANDSCAPE ARCHITECT FOR THE PATTERN AND COLOR OF ITEM 608.01020005- COLORED AND IMPRINTED PORTLAND CEMENT.

AFFIX SEAL: ON: 07/18/18
 ALTERED BY: ON:



AS-BUILT REVISIONS
 DESCRIPTION OF ALTERATIONS:

SH 58-14 - INTERSTATE ROUTE 587
 (THRUWAY ACCESS ROUTE 28 - ALBANY AVE & BROADWAY)
 SH 75-30 - BROADWAY TO ROUTE 32
 COUNTY: ULSTER REGION: 08

PIN 8811.26
 ROUTE 32
 UTILITY QUALITY LEVEL C

BRIDGES
 CULVERTS

ALL DIMENSIONS IN FT UNLESS OTHERWISE NOTED
 LANDSCAPE PLAN

CONTRACT NUMBER
 D263784
 DRAWING NO. LAP-03
 SHEET NO. 137

IT IS A VIOLATION OF LAW FOR ANY PERSON, UNLESS THEY ARE ACTING UNDER THE DIRECTION OF A LICENSED PROFESSIONAL ENGINEER, ARCHITECT, LANDSCAPE ARCHITECT, OR LAND SURVEYOR, TO ALTER AN ITEM IN ANY WAY. IF AN ITEM BEARING THE STAMP OF A LICENSED PROFESSIONAL IS ALTERED, THE ALTERING ENGINEER, ARCHITECT, LANDSCAPE ARCHITECT, OR LAND SURVEYOR SHALL STAMP THE DOCUMENT AND INCLUDE THE NOTATION "ALTERED BY" FOLLOWED BY THEIR SIGNATURE, THE DATE OF SUCH ALTERATION, AND A SPECIFIC DESCRIPTION OF THE ALTERATION.



FILE NAME = 881126_cph_lan_03.dgn
 DATE/TIME = 17-JUL-2018 14:37
 USER = khurley

PROJECT MANAGER M. KRUK

CHECK

DRAFTING

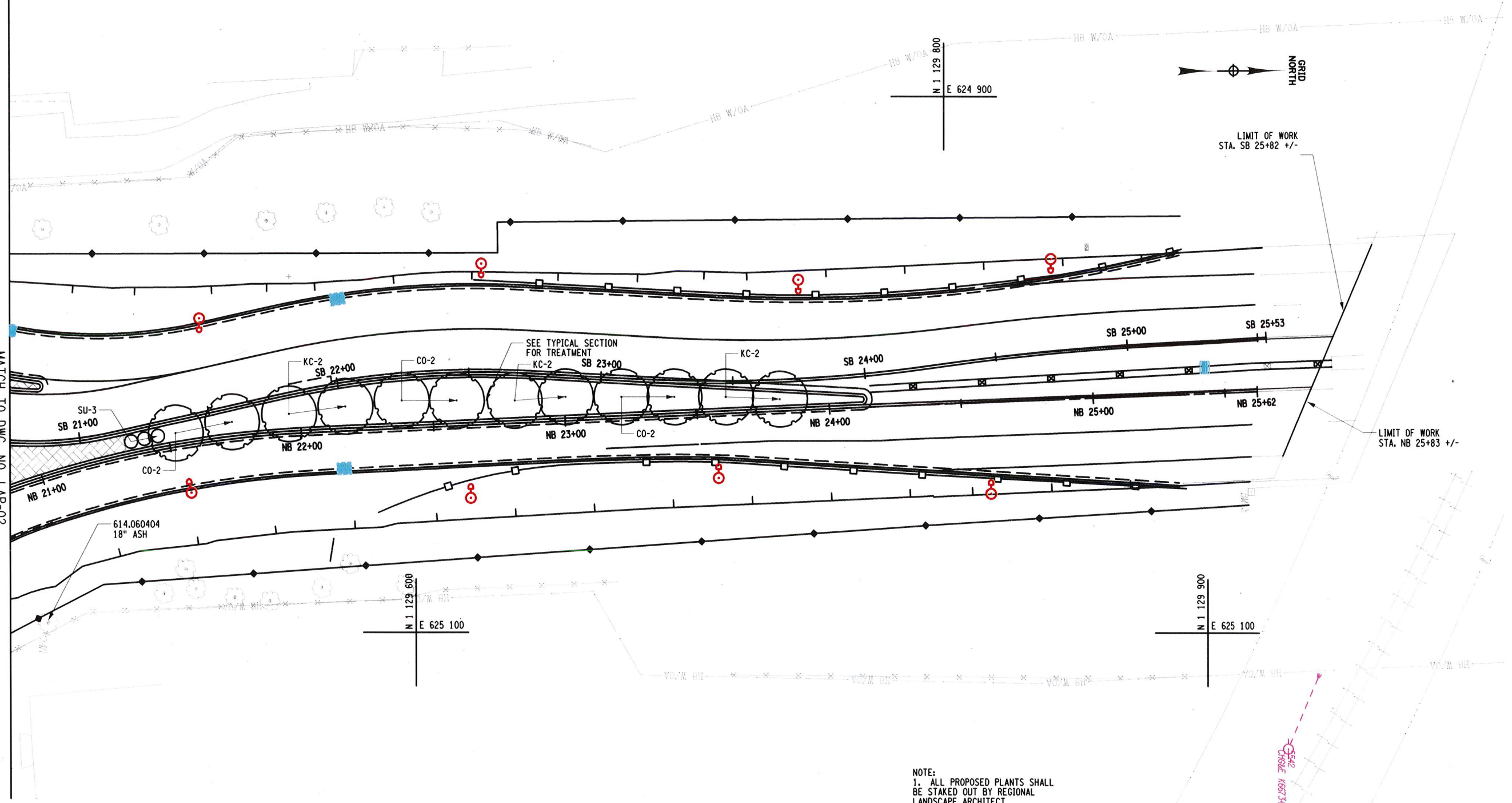
CHECK

DESIGN

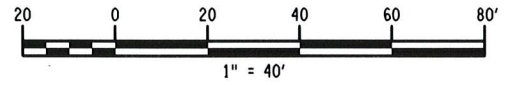
JOB MANAGER MARK KRUK

DESIGN SUPERVISOR C. RYAN

MATCH TO DWG. NO. LAP-02



NOTE:
 1. ALL PROPOSED PLANTS SHALL BE STAKED OUT BY REGIONAL LANDSCAPE ARCHITECT
 2. THE CONTRACTOR WILL SUBMIT A SAMPLE FOR APPROVAL TO THE REGIONAL LANDSCAPE ARCHITECT FOR THE PATTERN AND COLOR OF ITEM 608.01020005- COLORED AND IMPRINTED PORTLAND CEMENT.



AFFIX SEAL ON: 07/18/18
 ALTERED BY ON:



AS-BUILT REVISIONS DESCRIPTION OF ALTERATIONS:	SH 58-14 - INTERSTATE ROUTE 587 (THRUWAY ACCESS ROUTE 28 - ALBANY AVE & BROADWAY)	PIN 8811.26 ROUTE 32 UTILITY QUALITY LEVEL C	BRIDGES	CULVERTS	ALL DIMENSIONS IN FT UNLESS OTHERWISE NOTED	CONTRACT NUMBER D263784
	SH 75-30 - BROADWAY TO ROUTE 32				LANDSCAPE PLAN	DRAWING NO. LAP-04 SHEET NO. 138
	COUNTY: ULSTER	REGION: 08				

IT IS A VIOLATION OF LAW FOR ANY PERSON, UNLESS THEY ARE ACTING UNDER THE DIRECTION OF A LICENSED PROFESSIONAL ENGINEER, ARCHITECT, LANDSCAPE ARCHITECT, OR LAND SURVEYOR, TO ALTER AN ITEM IN ANY WAY. IF AN ITEM BEARING THE STAMP OF A LICENSED PROFESSIONAL IS ALTERED, THE ALTERING ENGINEER, ARCHITECT, LANDSCAPE ARCHITECT, OR LAND SURVEYOR SHALL STAMP THE DOCUMENT AND INCLUDE THE NOTATION "ALTERED BY" FOLLOWED BY THEIR SIGNATURE, THE DATE OF SUCH ALTERATION, AND A SPECIFIC DESCRIPTION OF THE ALTERATION.



FILE NAME = 881126_cph_lan_04.dgn
 DATE/TIME = 17-JUL-2018 14:37
 USER = khurley

