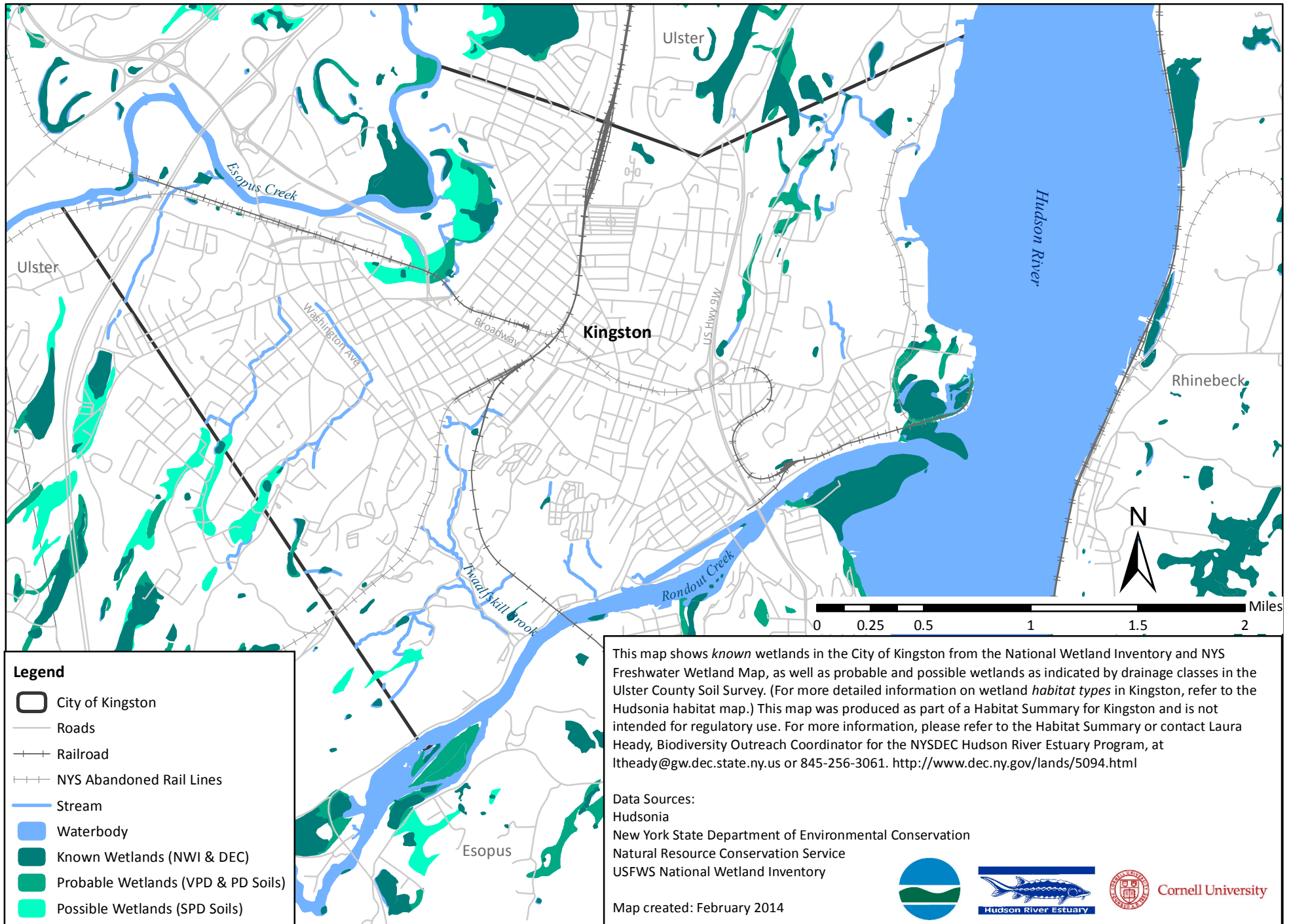





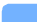





Figure 4: Wetlands in Kingston, NY



Legend

-  City of Kingston
-  Roads
-  Railroad
-  NYS Abandoned Rail Lines
-  Stream
-  Waterbody
-  Known Wetlands (NW & DEC)
-  Probable Wetlands (VPD & PD Soils)
-  Possible Wetlands (SPD Soils)

This map shows *known* wetlands in the City of Kingston from the National Wetland Inventory and NYS Freshwater Wetland Map, as well as probable and possible wetlands as indicated by drainage classes in the Ulster County Soil Survey. (For more detailed information on wetland *habitat types* in Kingston, refer to the Hudsonia habitat map.) This map was produced as part of a Habitat Summary for Kingston and is not intended for regulatory use. For more information, please refer to the Habitat Summary or contact Laura Heady, Biodiversity Outreach Coordinator for the NYSDEC Hudson River Estuary Program, at lthead@gw.dec.state.ny.us or 845-256-3061. <http://www.dec.ny.gov/lands/5094.html>

Data Sources:
 Hudsonia
 New York State Department of Environmental Conservation
 Natural Resource Conservation Service
 USFWS National Wetland Inventory

Map created: February 2014



Cornell University