



City of Kingston, NY OPEN SPACE PLAN



Public Meeting
May 14, 2019





Welcome!

City of Kingston Open Space Plan Draft Plan Presentation

This project has received technical assistance from the NYSDEC Hudson River Estuary Program, and funding from an Estuary Grant



**Hudson River
Estuary Program**

A Program of the New York State Department of Environmental Conservation



Thank you for attending!

Agenda Tonight

- 1. Meeting Opening and Introductions*
- 2. Presentation of Draft Plan*
- 3. Discussion and Next Steps*
- 4. Adjournment*



What is an Open Space Plan?

Open space plans and conservation are about identifying what areas of your community are most important to protect for long-term growth and resource planning —and taking action.





What is an Open Space Plan?

An Open Space Plan can help:

- Protect safe drinking water
- Improve flood control
- Maintain habitats for wildlife
- Reduce noise pollution
- Improve air quality
- Provide outdoor recreation
- Conserve important farmland
- Conserve scenic resources
- Steer future zoning policy
- Protect property values





The Role of the Public

Public input is important:

- Confirming inventory
- Identifying priorities
- Developing plan concepts
- Synthesizing a vision
- Reviewing the draft plan
- Refining the final plan
- Promote implementation





Public Workshop

Some things we heard at the workshop:

- Protection of the Esopus Creek floodplain; kayak access.
- Preservation of the undeveloped lands in the vicinity of Wilbur hamlet in Roundout uplands
- Daylight buried streams such as Tannery Brook / Twaalfskill.
- More community gardens; more street trees.
- Improve water quality from combined sewer overflows.
- More park access in Midtown.
- Additional marina/dock space along Rondout.



Open Space Vision

Kingston's open space system is an interconnected network of parks, paths and preserves that add to the quality of life in the city. The city and its rivers are intertwined in history —and this natural and cultural legacy includes both protected uplands and restored shoreline. Enhanced waterfront access and riparian habitats coupled with naturalized stormwater management systems create the foundation of Kingston's green infrastructure network. The city's comprehensive trail system connects revitalized and expanded parklands and other community recreation resources with local and regional destinations. Community gardens and expanded urban agricultural opportunities help connect people with nature. Kingston is celebrated as a "Tree City" by the Arbor Day Foundation, recognizing the importance of an urban tree canopy and improved care of Kingston's vital city trees. Together these open space resources provide a beautiful and healthy framework for Kingston's continued revitalization; yielding benefits to the quality of life and economic vitality for all who live, work, and play in our treasured city.



Natural Resource Inventory

- Forest canopy cover
- Urban street trees
- Terrestrial corridors
- Biologically important areas
- Natural habitats
- Principal aquifers
- Surface waters
- Wetlands & hydric soils
- Riparian buffers
- Aquatic biology
- Recreational amenities
- Parcels adjacent to parklands
- Parcels adjacent to historic sites
- City of Kingston owned land





Natural Resource Inventory

FORESTS



RIPARIAN BUFFERS



PARKLAND



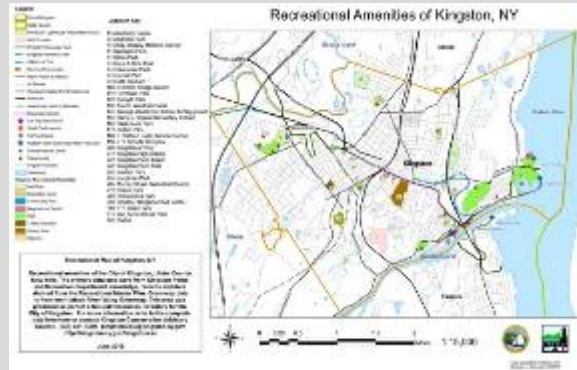
HISTORIC SITES



LAND BIOLOGY



RECREATION AMENITIES



AQUATIC BIOLOGY





Using The Inventory – Spatial Analysis



Recreation Areas

Riparian Buffers

Historic Resources

Biologically Important Areas

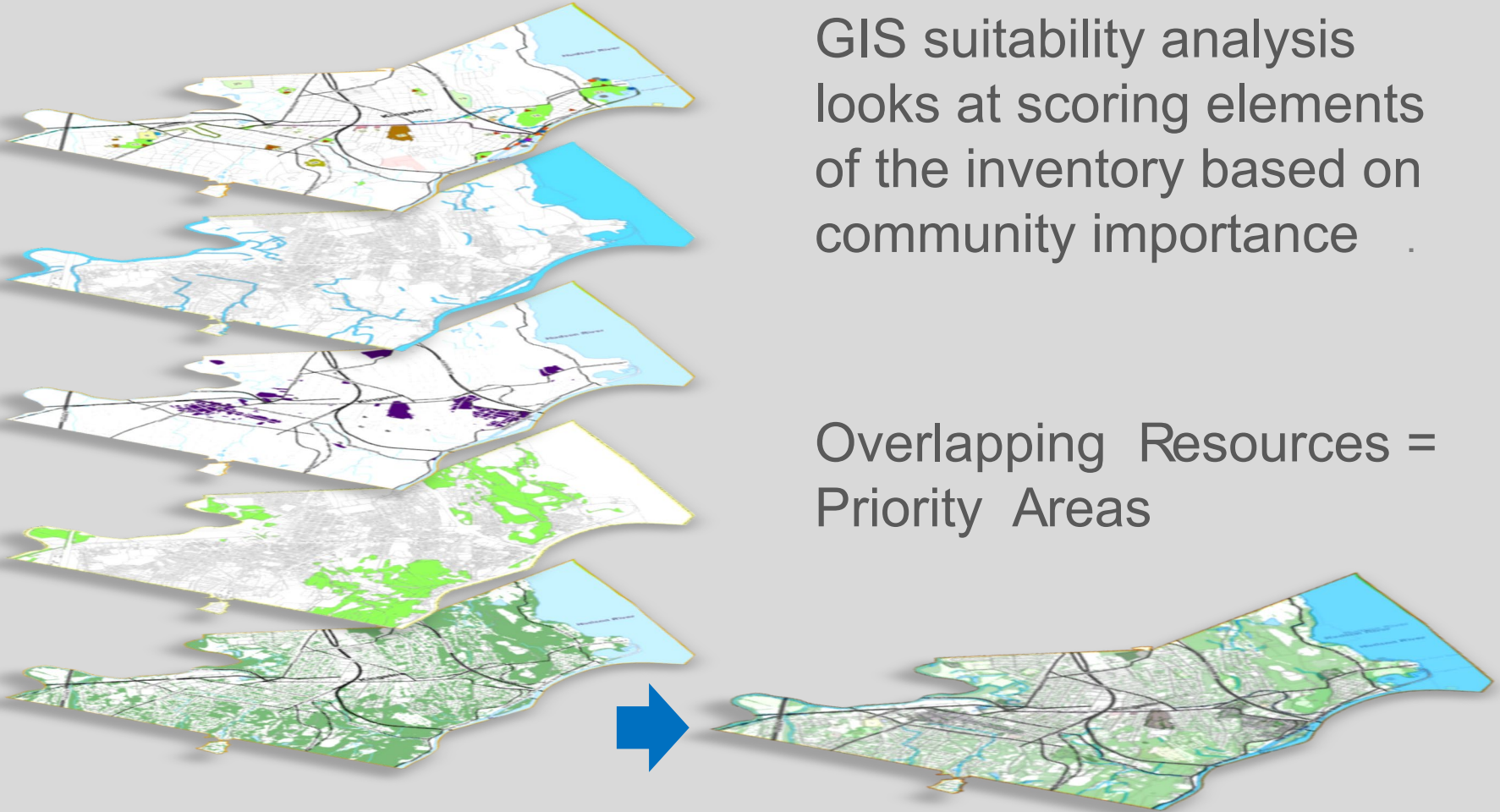
Forest Cover



Using The Inventory – Spatial Analysis

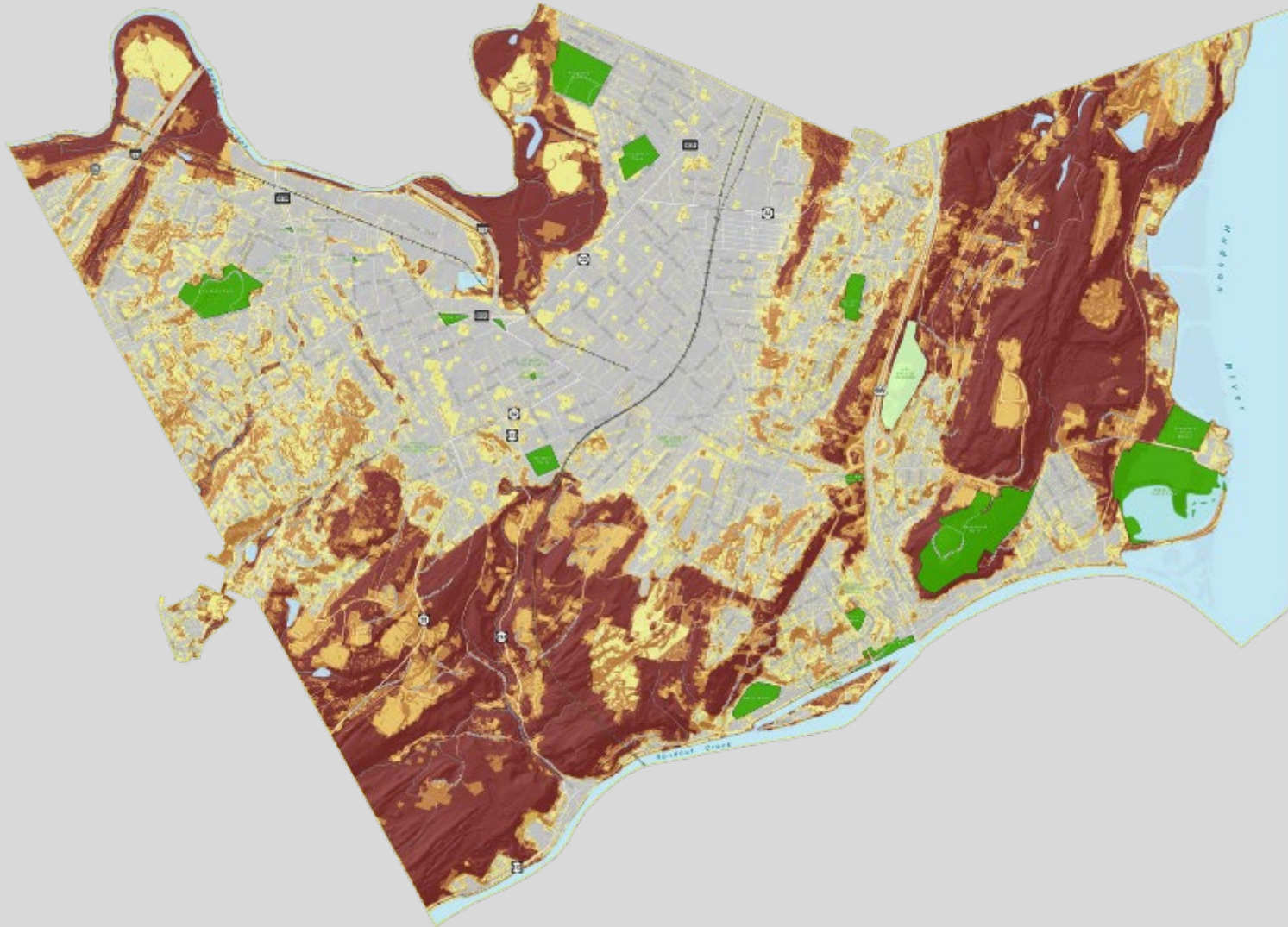
GIS suitability analysis looks at scoring elements of the inventory based on community importance .

Overlapping Resources = Priority Areas





Prioritization of Resources - Composite

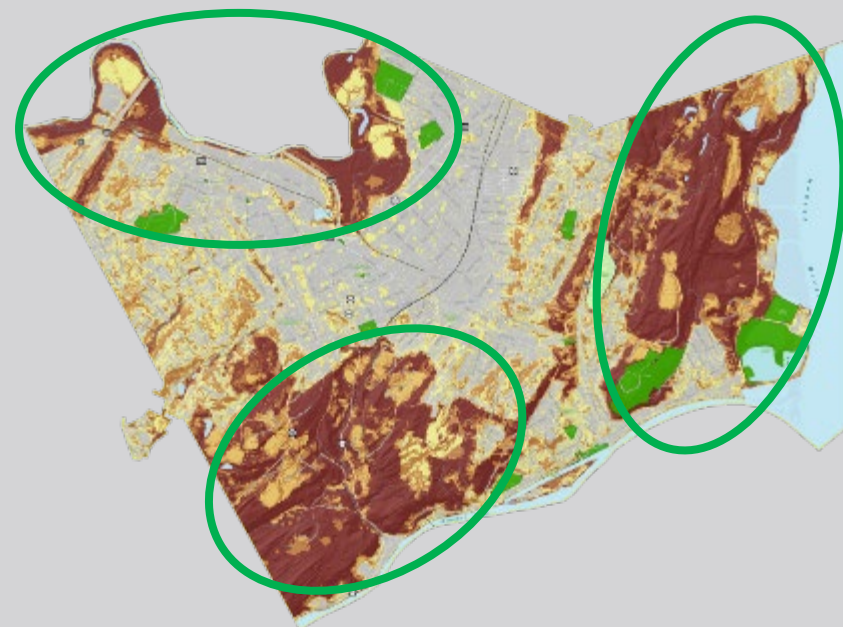




Open Space Plan Recommendations

Priorities for Protection:

- Three notable areas within the city which have significant natural resources:
 - Coastal and upland region of Hudson River
 - Coastal and upland region of Rondout Creek
 - Lowlands along the Esopus Creek

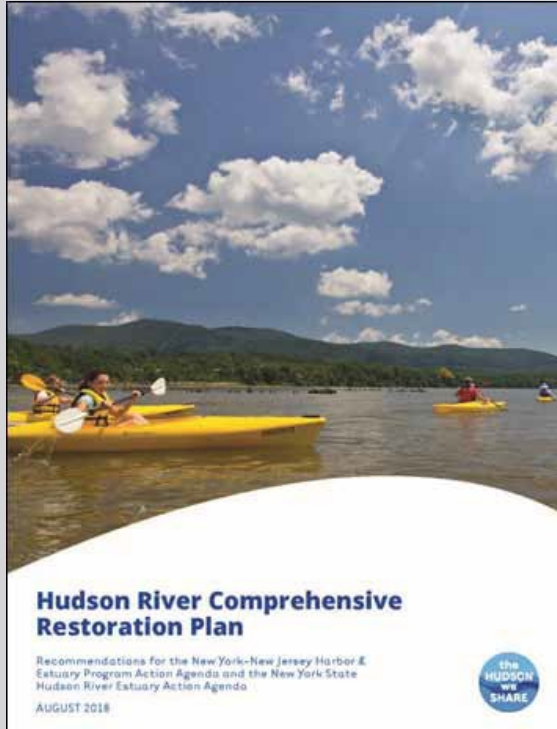


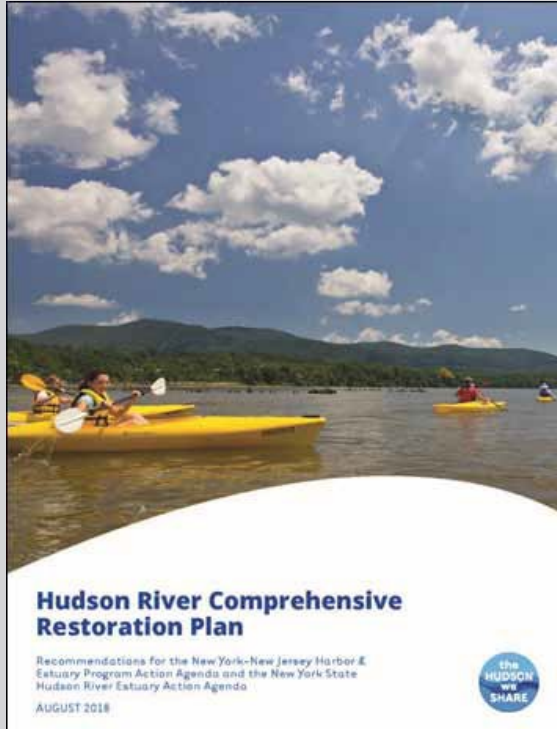


Hudson

Some of the concerns along the Hudson :

- Coastal flooding
- Invasive species management
- Brownfield remediation





Recommendations:

- Restore/naturalize the Hudson shoreline habitat
- Complete the riverfront trail (Empire State Trail) and secure additional public access to the river.
- Protect larger section of upland habitat area.
- Secure additional water views and scenic overlooks.



Rondout

- Greenline trail system for the entire corridor.
- Develop a blueway trail on the creek --a “paddler’s paradise”.
- Protect upland undeveloped vacant lands using low impact conservation -based design
- Preserve and restore naturalized shoreline for stream corridors leading to the



Esopus

- Create walking paths along the water with connections to Ulster County Linear Park rail trail.
- Create appropriate sites for kayak and canoe launches along the south side of the creek.
- Recognize the existing farmland, floodplain and wetlands along the creek that provide good opportunities for long-term conservation as preserved land.
- Improve shoreline management and the removal of debris, management of the tree canopy



Open Space Vision Map

OPEN SPACE VISION MAP





Open Space Vision Map

OPEN SPACE VISION MAP



- Priority Conservation Areas
- Potential Future Park Areas
- Potential Future Stormwater Retention Areas
- Priority Area for Neighborhood Parks
- Urban Forest Area
- Existing Parkland
- Empire State Trail
- Existing & Planned Local Trail System
- Future Trail Concepts
- Proposed Open Space Gateway Points
- Potential Kayak Launch

500 ADDITIONAL ACRES PERMANENTLY PROTECTED

- Protect upland forest habitat
- Important natural area
- Create scenic overlook opportunities





Open Space Vision Map

OPEN SPACE VISION MAP



- Priority Conservation Areas
- Potential Future Park Areas
- Potential Future Stormwater Retention Areas
- Priority Area for Neighborhood Parks
- Urban Forest Area
- Existing Parkland
- Employement Trail
- Existing & Planned Local Trail System
- Future Trail Concepts
- Proposed Open Space Gateway Points
- Potential Kayak Launch

5,000
ADDITIONAL
LINEAR FEET OF
PUBLIC ACCESS
HUDSON

- Recognizes Hudson River Valley National Heritage Area
- Advances Empire State Trail
- Creates valuable community amenity

500 ADDITIONAL ACRES PERMANENTLY PROTECTED

- Protect upland forest habitat
- Important natural area
- Create scenic overlook opportunities





Open Space Vision Map

OPEN SPACE VISION MAP



- Priority Conservation Areas
- Potential Future Park Areas
- Potential Future Stormwater Retention Areas
- Priority Area for Neighborhood Parks
- Urban Forest Area
- Existing Parkland
- Empire State Trail
- Existing & Planned Local Trail System
- Future Trail Concepts
- Proposed Open Space Gateway Points
- Potential Kayak Launch

5,000
ADDITIONAL
LINEAR FEET OF
PUBLIC ACCESS
HUDSON



- Recognizes Hudson River Valley National Heritage Area
- Advances Empire State Trail
- Creates valuable community amenity



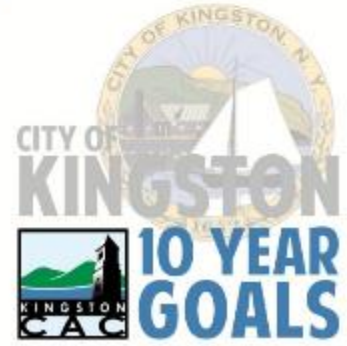
500
ADDITIONAL ACRES
PERMANENTLY PROTECTED

- Protect upland forest habitat
- Important natural area
- Create scenic overlook opportunities

5,000
ADDITIONAL
LINEAR FEET OF
PUBLIC ACCESS
RONDOUT



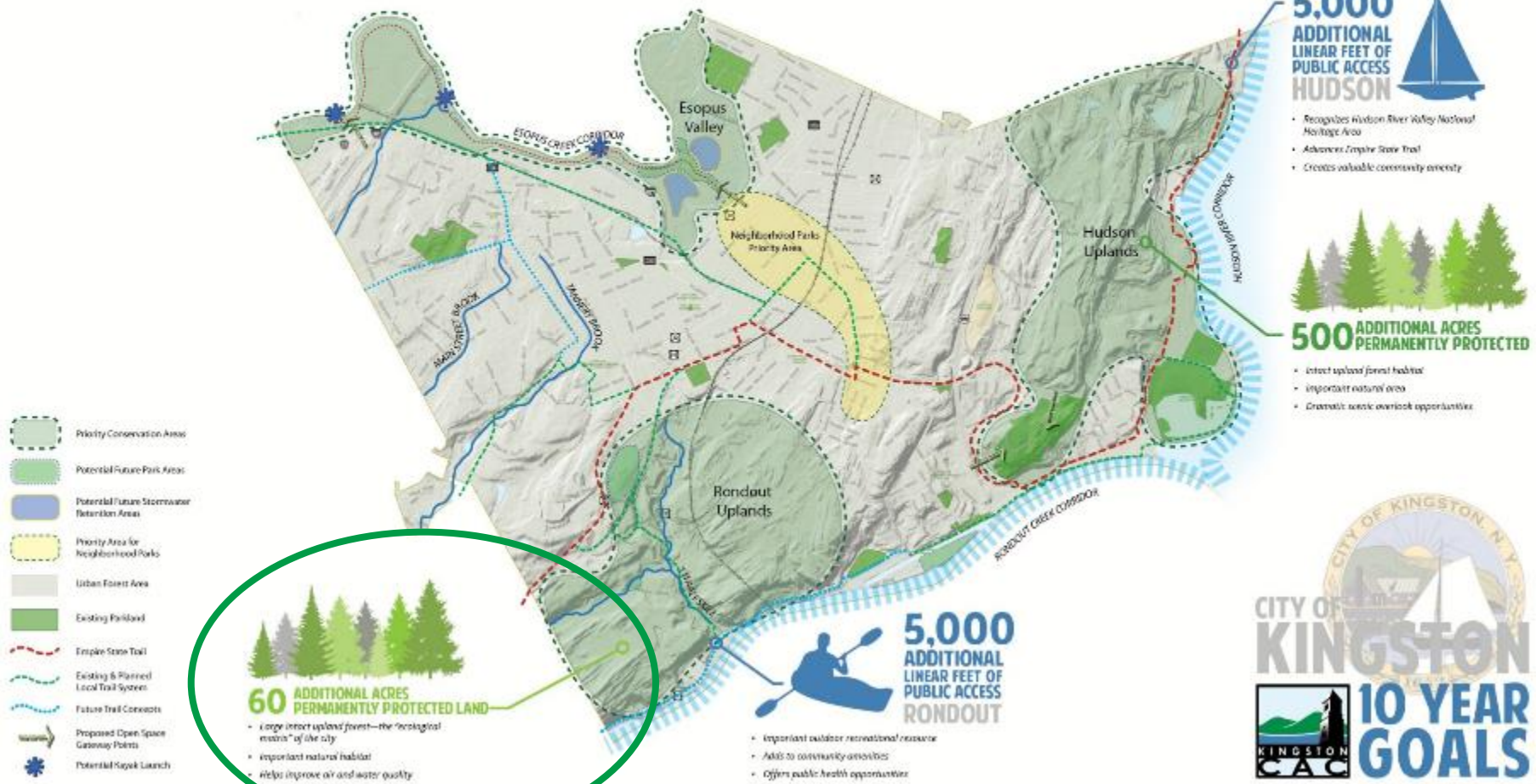
- Important outdoor recreational resource
- Adds to community amenities
- Offers public health opportunities





Open Space Vision Map

OPEN SPACE VISION MAP





Open Space Vision Map

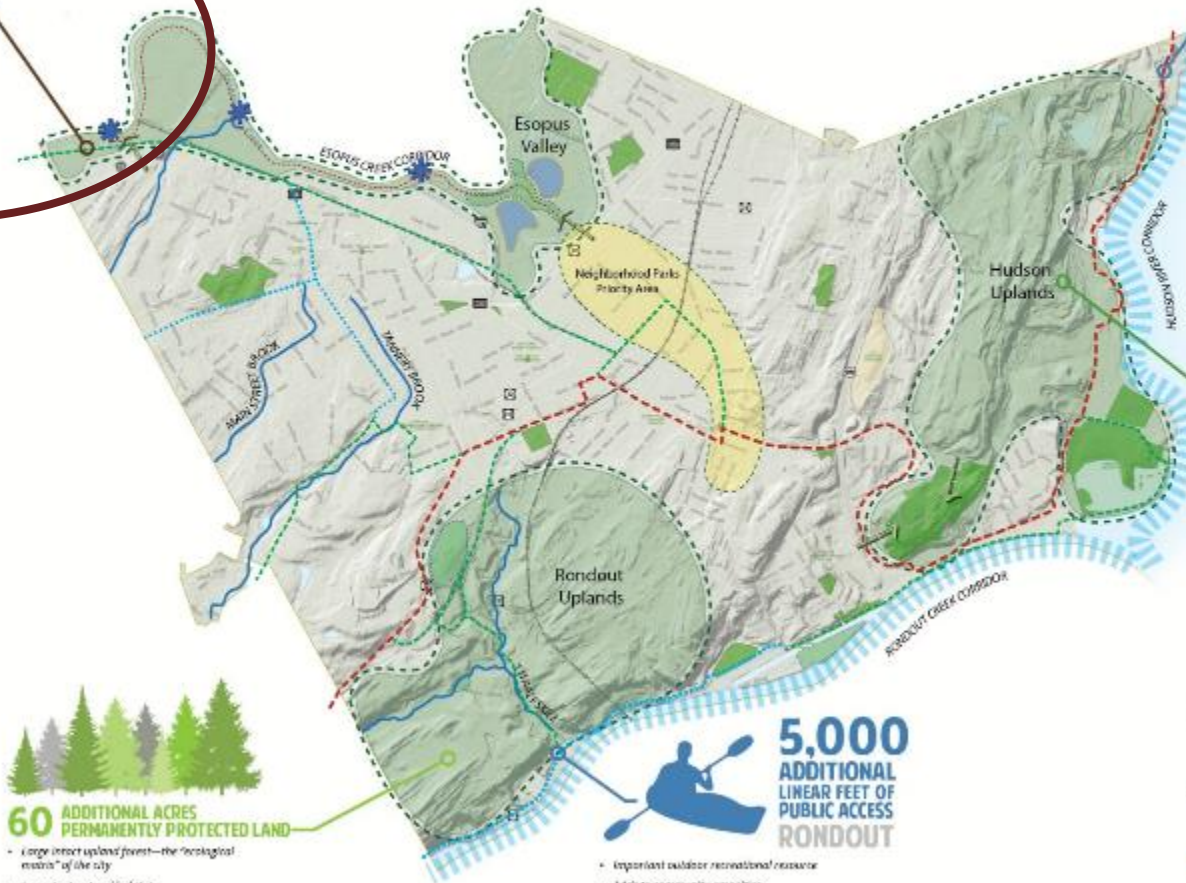
OPEN SPACE VISION MAP

5 MILES OF NEW TRAILS



- Continue to build trail system
- Connect open space resources
- Contribute to health and mobility

- Priority Conservation Areas
- Potential Future Park Areas
- Potential Future Stormwater Retention Areas
- Priority Area for Neighborhood Parks
- Urban Forest Area
- Existing Parkland
- Empire State Trail
- Existing & Planned Local Trail System
- Future Trail Concepts
- Proposed Open Space Gateway Points
- Potential Kayak Launch



60 ADDITIONAL ACRES PERMANENTLY PROTECTED LAND

- Large intact upland forest—the “ecological reserve” of the city
- Important natural habitat
- Helps improve air and water quality

5,000 ADDITIONAL LINEAR FEET OF PUBLIC ACCESS RONDOUT



- Important outdoor recreational resource
- Adds to community amenities
- Offers public health opportunities

5,000 ADDITIONAL LINEAR FEET OF PUBLIC ACCESS HUDSON



- Recognizes Hudson River Valley National Heritage Area
- Advances Empire State Trail
- Creates valuable community amenity



500 ADDITIONAL ACRES PERMANENTLY PROTECTED

- Intact upland forest habitat
- Important natural area
- Creates scenic overlook opportunities





Open Space Vision Map

5 MILES OF NEW TRAILS



- Continue to build trail system
- Connect open space resources
- Contribute to health and mobility

50 ADDITIONAL ACRES OF FARMLAND & NATURAL AREAS PROTECTED

- Working family farmland safety
- High priority natural area
- Important cultural resource

OPEN SPACE VISION MAP

5,000 ADDITIONAL LINEAR FEET OF PUBLIC ACCESS HUDSON



- Recognizes Hudson River Valley National Heritage Area
- Advances Empire State Trail
- Creates valuable community amenity



500 ADDITIONAL ACRES PERMANENTLY PROTECTED

- Protect upland forest habitat
- Important natural area
- Create scenic overlook opportunities

- Priority Conservation Areas
- Potential Future Park Areas
- Potential Future Stormwater Retention Areas
- Priority Area for Neighborhood Parks
- Urban Forest Area
- Existing Farmland
- Empire State Trail
- Existing & Planned Local Trail System
- Future Trail Concepts
- Proposed Open Space Gateway Points
- Potential Kayak Launch



60 ADDITIONAL ACRES PERMANENTLY PROTECTED LAND

- Large intact upland forest—the “ecological reserve” of the city
- Important natural habitat
- Helps improve air and water quality



5,000 ADDITIONAL LINEAR FEET OF PUBLIC ACCESS RONDOUT

- Important outdoor recreational resource
- Adds to community amenities
- Offers public health opportunities





Open Space Vision Map

5 MILES OF NEW TRAILS

- Continue to build trail system
- Connect open space resources
- Contribute to health and mobility

50 ADDITIONAL ACRES OF FARMLAND & NATURAL AREAS PROTECTED

- Working family farmland safety
- High priority natural area
- Important cultural resource



NEW NEIGHBORHOOD PARK

- Addresses neighborhood need
- Adds to community quality of life

OPEN SPACE VISION MAP

5,000 ADDITIONAL LINEAR FEET OF PUBLIC ACCESS HUDSON

- Recognizes Hudson River Valley National Heritage Area
- Advances Empire State Trail
- Creates valuable community amenity



500 ADDITIONAL ACRES PERMANENTLY PROTECTED

- Protect upland forest habitat
- Important natural area
- Create scenic overlook opportunities



- Priority Conservation Areas
- Potential Future Park Areas
- Potential Future Stormwater Retention Areas
- Priority Area for Neighborhood Parks
- Urban Forest Area
- Existing Farmland
- Empire State Trail
- Existing & Planned Local Trail System
- Future Trail Concepts
- Proposed Open Space Gateway Points
- Potential Kayak Launch

60 ADDITIONAL ACRES PERMANENTLY PROTECTED LAND

- Large intact upland forest—the “ecological reserve” of the city
- Important natural habitat
- Helps improve air and water quality

5,000 ADDITIONAL LINEAR FEET OF PUBLIC ACCESS RONDOUT



- Important outdoor recreational resource
- Adds to community amenities
- Offers public health opportunities





Open Space Vision Map

5 MILES OF NEW TRAILS

- Continue to build trail system
- Connect open space resources
- Contribute to health and mobility

50 ADDITIONAL ACRES OF FARMLAND & NATURAL AREAS PROTECTED

- Working family farmland asset
- High priority natural area
- Important cultural resource



NEW NEIGHBORHOOD PARK

- Addresses neighborhood need
- Adds to community quality of life

OPEN SPACE VISION MAP

5,000 ADDITIONAL LINEAR FEET OF PUBLIC ACCESS HUDSON



- Recognizes Hudson River Valley National Heritage Area
- Advances Empire State Trail
- Creates valuable community amenity



500 ADDITIONAL ACRES PERMANENTLY PROTECTED

- Protect upland forest habitat
- Important natural area
- Create scenic overlook opportunities



- Priority Conservation Areas
- Potential Future Park Areas
- Potential Future Stormwater Retention Areas
- Priority Area for Neighborhood Parks
- Urban Forest Area
- Existing Farmland
- Empire State Trail
- Existing & Planned Local Trail System
- Future Trail Concepts
- Proposed Open Space Gateway Points
- Potential Kayak Launch

60 ADDITIONAL ACRES PERMANENTLY PROTECTED LAND

- Large intact upland forest—the “ecological reserve” of the city
- Important natural habitat
- Helps improve air and water quality

5,000 ADDITIONAL LINEAR FEET OF PUBLIC ACCESS RONDOUT



- Important outdoor recreational resource
- Adds to community amenities
- Offers public health opportunities

1,000 NEW STREET TREES PLANTED



- Beautify public streetscapes
- Provides shade and filters air pollutants
- Adds to neighborhood walk





Open Space Vision Map

5 MILES OF NEW TRAILS

- Continue to build trail system
- Connect open space resources
- Contribute to health and mobility

50 ADDITIONAL ACRES OF FARMLAND & NATURAL AREAS PROTECTED

- Working family farmland safety
- High priority natural area
- Important cultural resource

1 NEW NEIGHBORHOOD PARK

- Addresses neighborhood need
- Adds to community quality of life

OPEN SPACE VISION MAP

5,000 ADDITIONAL LINEAR FEET OF PUBLIC ACCESS HUDSON

- Recognizes Hudson River Valley National Heritage Area
- Advances Empire State Trail
- Creates valuable community amenity

500 ADDITIONAL ACRES PERMANENTLY PROTECTED

- Protect upland forest habitat
- Important natural area
- Creates scenic overlook opportunities

2,500 LINEAR FEET OF STREAM CORRIDOR RESTORED

- Alternative to encroachment where feasible
- Helps manage stormwater flow
- Improves water quality and aesthetics

60 ADDITIONAL ACRES PERMANENTLY PROTECTED LAND

- Large intact upland forest—the “ecological reserve” of the city
- Important natural habitat
- Helps improve air and water quality

5,000 ADDITIONAL LINEAR FEET OF PUBLIC ACCESS RONDOUT

- Important outdoor recreational resource
- Adds to community amenities
- Offers public health opportunities

1,000 NEW STREET TREES PLANTED

- Beautify public streetscapes
- Provides shade and filters air pollutants
- Adds to neighborhood walk

- Priority Conservation Areas
- Potential Future Park Areas
- Potential Future Stormwater Retention Areas
- Priority Area for Neighborhood Parks
- Urban Forest Area
- Existing Farmland
- Empire State Trail
- Existing & Planned Local Trail System
- Future Trail Concepts
- Proposed Open Space Gateway Points
- Potential Kayak Launch





Open Space Vision Map

OPEN SPACE VISION MAP

5 MILES OF NEW TRAILS

- Continue to build trail system
- Connect open space resources
- Contribute to health and mobility

10 NEW URBAN COMMUNITY GARDENS

- Healthy local living opportunity
- Improve access to nutritious food
- Educational environment for youth

50 ADDITIONAL ACRES OF FARMLAND & NATURAL AREAS PROTECTED

- Working family farmland safety
- High priority natural area
- Important cultural resource

1 NEW NEIGHBORHOOD PARK

- Addresses neighborhood need
- Adds to community quality of life

5,000 ADDITIONAL LINEAR FEET OF PUBLIC ACCESS HUDSON

- Recognizes Hudson River Valley National Heritage Area
- Advances Empire State Trail
- Creates valuable community amenity

500 ADDITIONAL ACRES PERMANENTLY PROTECTED

- Protect upland forest habitat
- Important natural area
- Creates scenic overlook opportunities

2,500 LINEAR FEET OF STREAM CORRIDOR RESTORED

- Alternative recreation where feasible
- Helps manage stormwater flow
- Improves water quality and aesthetics

60 ADDITIONAL ACRES PERMANENTLY PROTECTED LAND

- Large intact upland forest—the “ecological reserve” of the city
- Important natural habitat
- Helps improve air and water quality

5,000 ADDITIONAL LINEAR FEET OF PUBLIC ACCESS RONDOUT

- Important outdoor recreational resource
- Adds to community amenities
- Offers public health opportunities

1,000 NEW STREET TREES PLANTED

- Beautify public streetscapes
- Provides shade and filters air pollutants
- Adds to neighborhood walk

- Priority Conservation Areas
- Potential Future Park Areas
- Potential Future Stormwater Retention Areas
- Priority Area for Neighborhood Parks
- Urban Forest Area
- Existing Farmland
- Empire State Trail
- Existing & Planned Local Trail System
- Future Trail Concepts
- Proposed Open Space Gateway Points
- Potential Kayak Launch







Partners for Implementation

- Landowners
- Land Trusts: Kingston Land Trust, Scenic Hudson
- Hudson Valley YMCA, Farm Hub, Riverkeeper
- Ulster County, NYS Agencies: DEC, DOS, DOT
- Federal Agencies: EPA, HUD, USDA
- General Public
- Business Community
- City Departments and Agencies:
Conservation Advisory Council



Image courtesy Kingston Land Trust



Next Step and Future Phases

Plan Adoption

Subsequent Technical Work:

- Collaborate with partners
- Establish priority sites for protection
- Detailed planning and design development.
- Zoning and code amendments
- Project Financing





Discussion / Questions & Comments



Next Steps – After Tonight

- Document and review input from tonight
- Review ideas and priorities with CAC
- Finalize Open Space Plan for adoption





Thank you.

This project was funded in part by a grant from the Hudson River Estuary Program, a program of the New York State Department of Environmental Conservation with funding provided by the NYS Environmental Protection Fund.



112 Spring Street, Suite 305
Saratoga Springs, NY 12866

www.behanplanning.com