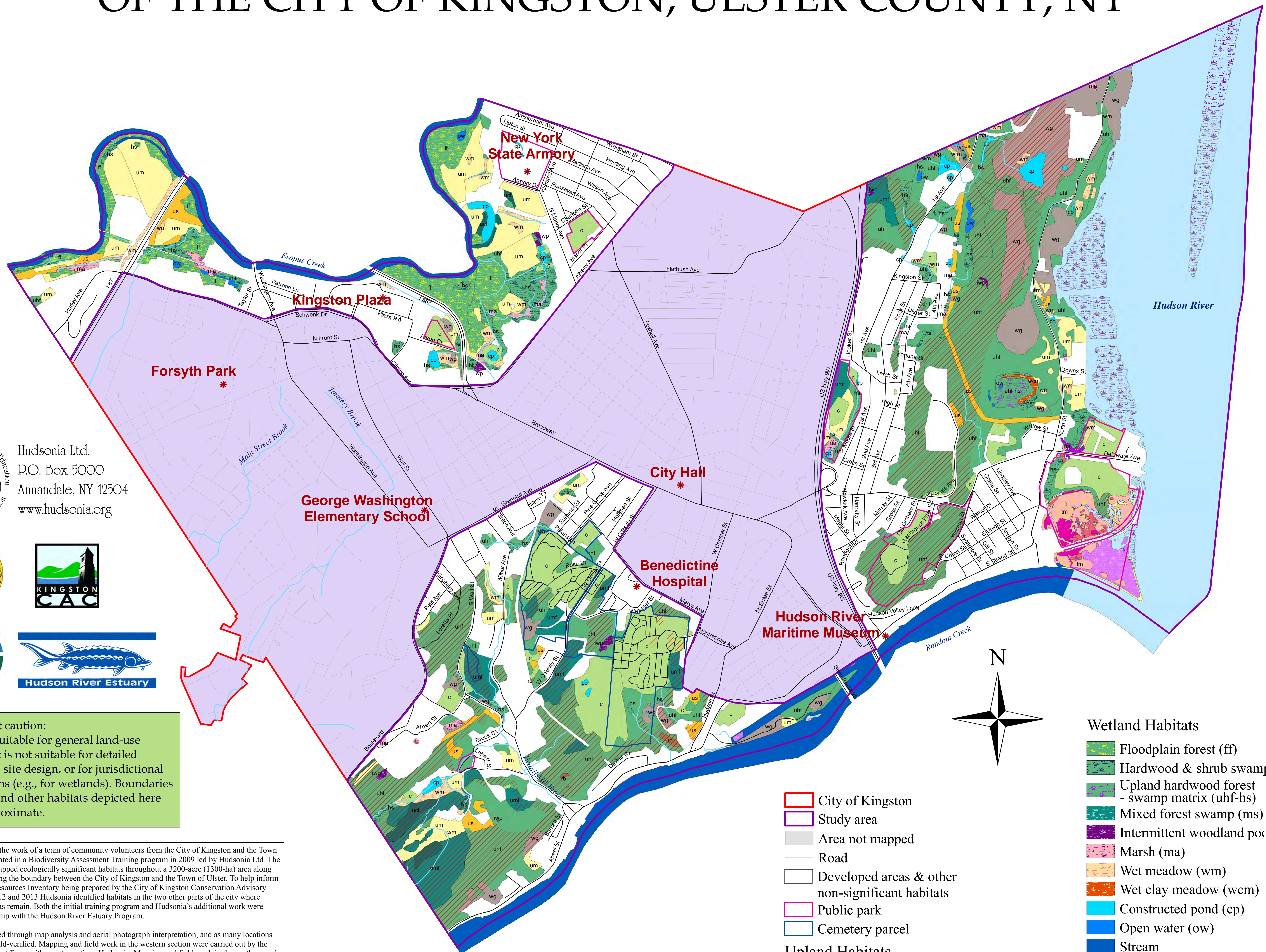


SIGNIFICANT HABITATS IN SELECTED AREAS OF THE CITY OF KINGSTON, ULSTER COUNTY, NY



Hudsonia Ltd.
P.O. Box 5000
Annandale, NY 12504
www.hudsonia.org



An important caution:
This map is suitable for general land-use planning, but is not suitable for detailed planning and site design, or for jurisdictional determinations (e.g., for wetlands). Boundaries of wetlands and other habitats depicted here are only approximate.

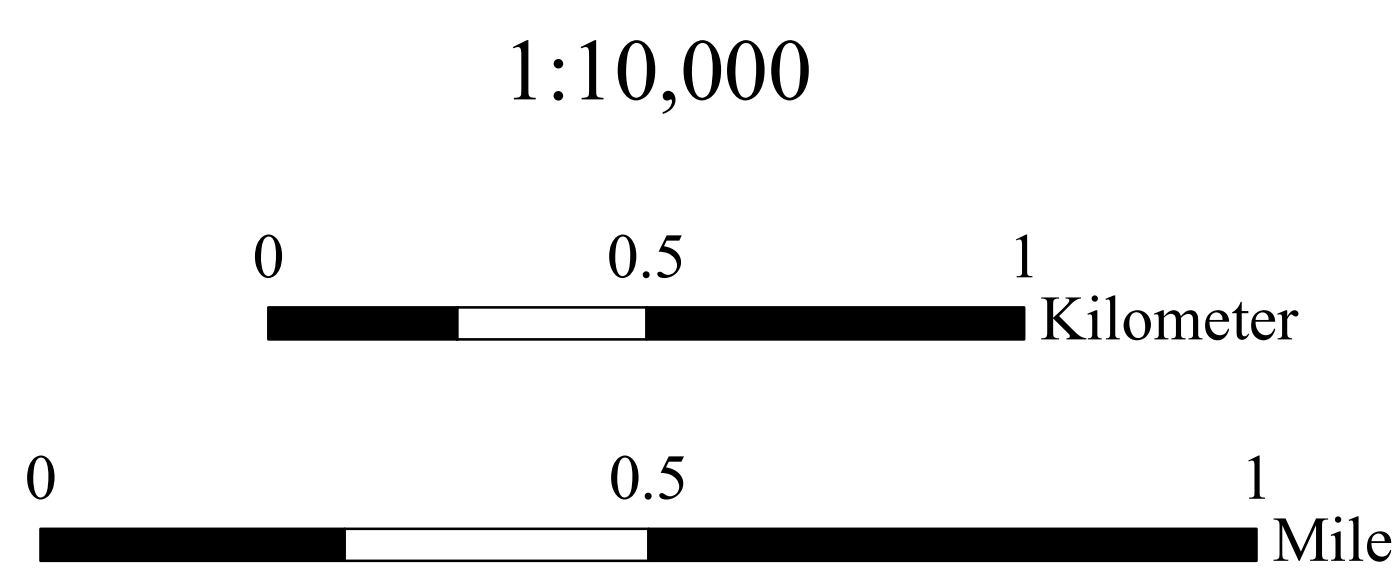
This map grew out of the work of a team of community volunteers from the City of Kingston and the Town of Ulster who participated in a Biodiversity Assessment Training program in 2009 led by Hudsonia Ltd. The team identified and mapped ecologically significant habitats throughout a 3200-acre (1300-ha) area along Esopus Creek straddling the boundary between the City of Kingston and the Town of Ulster. To help inform a city-wide Natural Resources Inventory being prepared by the City of Kingston Conservation Advisory Council (CAC), in 2012 and 2013 Hudsonia identified habitats in the two other parts of the city where substantial habitat areas remain. Both the initial training program and Hudsonia's additional work were carried out in partnership with the Hudson River Estuary Program.

Habitats were identified through map analysis and aerial photograph interpretation, and as many locations as practicable were field-verified. Mapping and field work in the western section were carried out by the Biodiversity Assessment Team with assistance from Hudsonia. Mapping and field work in the southern and eastern sections were carried out by Hudsonia biologists Ingrid Haeckel, Chris Graham, and Gretchen Stevens. Color infrared photographs in the USGS NAPP series, taken in spring 1994 (scale 1:40,000), were used for stereoscopic photointerpretation. Habitats were digitized onscreen over color infrared orthophoto images taken in spring 2001 and 2009 obtained from the New York State GIS Clearinghouse. Habitat data for Hudson River submerged aquatic vegetation (2007) and tidal wetlands (2007) produced by the NYSDEC Hudson River Estuary Program were obtained from the Hudson River National Estuarine Research Reserve.

The report prepared by the Biodiversity Assessment Training team in conjunction with the western portion of the map (Budziak et al. 2009, "Esopus Valley Biodiversity Assessment Report") explains the habitat identification and mapping methods, describes the ecological significance of many of the habitat types shown on this map, and offers conservation recommendations.

This project has been funded by the New York State Environmental Protection Fund through the Hudson River Estuary Program of the New York State Department of Environmental Conservation.

For more information, contact Julie Noble, City of Kingston Conservation Advisory Council (Julie.Noble@Kingston-ny.gov), or Gretchen Stevens, Hudsonia Ltd. (845-758-7053).



- City of Kingston
- Study area
- Area not mapped
- Road
- Developed areas & other non-significant habitats
- Public park
- Cemetery parcel

- Upland Habitats**
- Upland hardwood forest (uhf)
 - Upland mixed forest (umf)
 - Upland conifer forest (ucf)
 - Rocky barren (rb)
 - Upland shrubland (us)
 - Upland meadow (um)
 - Cultural (c)
 - Waste ground (wg)
 - Calcareous crest, ledge, & talus

- Wetland Habitats**
- Floodplain forest (ff)
 - Hardwood & shrub swamp (hs)
 - Upland hardwood forest - swamp matrix (uhf-hs)
 - Mixed forest swamp (ms)
 - Intermittent woodland pool (iwp)
 - Marsh (ma)
 - Wet meadow (wm)
 - Wet clay meadow (wcm)
 - Constructed pond (cp)
 - Open water (ow)
 - Stream
 - Stream
- Tidal Habitats**
- Hudson River
 - Submerged aquatic vegetation
 - Lower intertidal mix
 - Upper intertidal mix
 - Water chestnut
 - Common reed
 - Cattail

